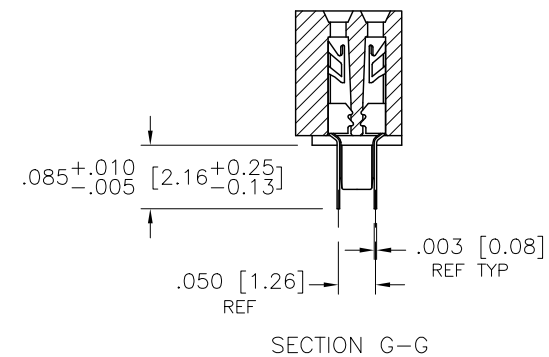
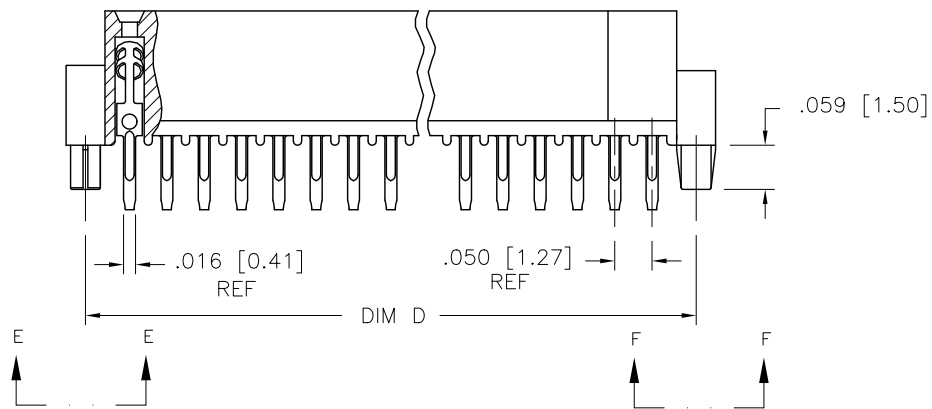
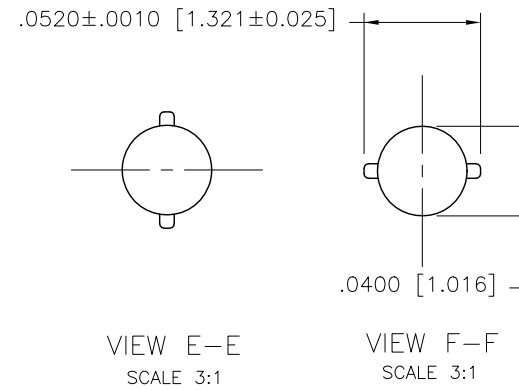
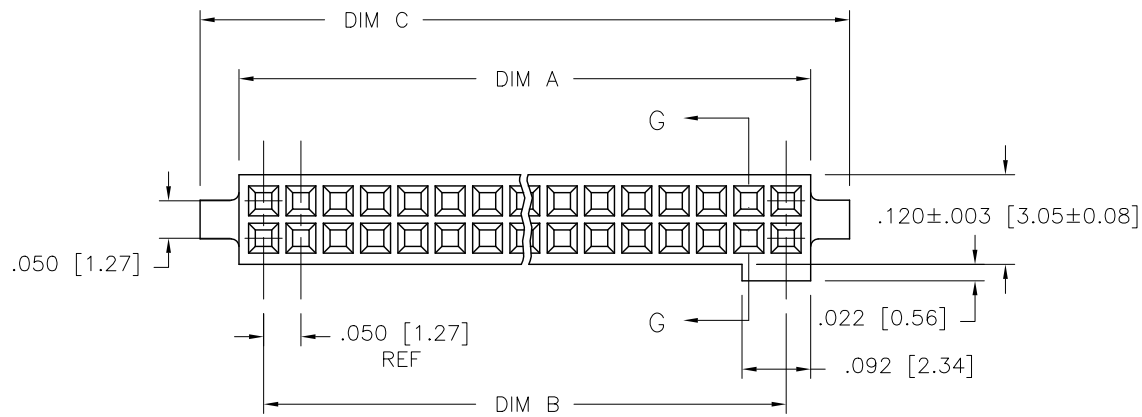


PRODUCT NUMBER
SEE TABLE



mat'l. code -				surface ISO 1302 ✓		tolerance ISO 406 ISO 1101		projection INCH/MM		product family RIB CAGE	
tolerances unless otherwise specified				angles		linear		scale 4:1		title .050/1.27cc V.C.C. THRU MT. W/POL. FEATURES	
ltr	ecn no	dr	date	σ±2'		xxx ±.005/.13		xxx ±.0020/.050		dwg no 98386	
A	v91777	EPK	9/07/99			xx ±.01/.3				sheet 1 of 2 size A3	
B	v10994	CRG	3/15/01							type Product Customer Drawing	
C	M05-0123	MHT	6/06/05								
D	M06-0284	AEA	7/27/06	dr	E.KROPIENICKI	9/07/99					
E	N10-0174	YO	6/17/10	engr	D. WHITING	9/07/99					
F	ELX-N-010285	YO	2/13/12	chr	D. WHITING	9/07/99					
				appd	D. WHITING	9/07/99					
sheet index		revision sheet	F 1	F 2							

PRODUCT NO. NOTE 5,6	SIZE	DIM A	DIM B	DIM C	DIM D
98386-605	2 X 5	.266/6.76	.200/5.08	.370/9.40	.3200/8.128
-610	2 X 10	.516/13.11	.450/11.43	.620/15.75	.5700/14.478
-615	2 X 15	.766/19.46	.700/17.78	.870/22.10	.8200/20.828
-620	2 X 20	1.016/25.81	.950/24.13	1.120/28.45	1.0700/27.178
-625	2 X 25	1.266/32.16	1.200/30.48	1.370/34.80	1.3200/33.528
-630	2 X 30	1.516/38.51	1.450/36.83	1.620/41.15	1.5700/39.878
-635	2 X 35	1.766/44.86	1.700/43.18	1.870/47.50	1.8200/46.228
-640	2 X 40	2.016/51.21	1.950/49.53	2.120/53.85	2.0700/52.578
-645	2 X 45	2.266/57.56	2.200/55.88	2.370/60.20	2.3200/58.928
98386-650	2 X 50	2.516/63.91	2.450/62.23	2.620/66.55	2.5700/65.278

NOTES :

- ① HOUSING MATERIAL :
GLASS FILLED THERMOPLASTIC FLAME RETARDANT
PER UL 94V-0
COLOR : NATURAL
- ② TERMINAL MATERIAL : BeCu
- ③ TERMINAL PLATING :
30μ"/0.76μm MIN HARD Au OR GXT OVER Ni ON CONTACT ZONES.
100μ"/2.54μm MIN TIN OVER Ni IN SOLDERING
ZONES. OTHERWISE GOLD FLASH OR UNPLAT
4. APPLICATION INFORMATION :
A. RECOMMENDED PCB LAYOUT PATTERN IS
SHOWN IN FIGURE A.
B. MATING PINS TO BE .0176/0.447 TO .0181/0.459 DIA.
C. MATING PIN TIPS TO BE IN TRUE POSITION TO MATING
GRID WITHIN .006/0.15 DIA.
D. SUGGESTED MATING PIN LENGTH .130/3.30
+.005/0.13 -.010/0.25.
- ⑤ ADD "LF" SUFFIX AT THE END OF PART NUMBER FOR
LEAD FREE OPTION.
- ⑥ THIS PRODUCT MEETS EUROPEAN UNION DIRECTIVES AND OTHER
COUNTRY REGULATION AS DESCRIBED IN GS-22-008.
7. THE HOUSING WILL WITHSTAND EXPOSURE TO 260°C PEAK TEMPERATURE
FOR 15 SECONDS IN A WAVE SOLDER APPLICATION WITH A 1.5mm
MINIMUM THICK CIRCUIT BOARD. SEE APPLICATION NOTES/PROCEDURES
IF THEY ARE AVAILABLE.
8. PRODUCT SPECIFICATION PER BUS-12-087.

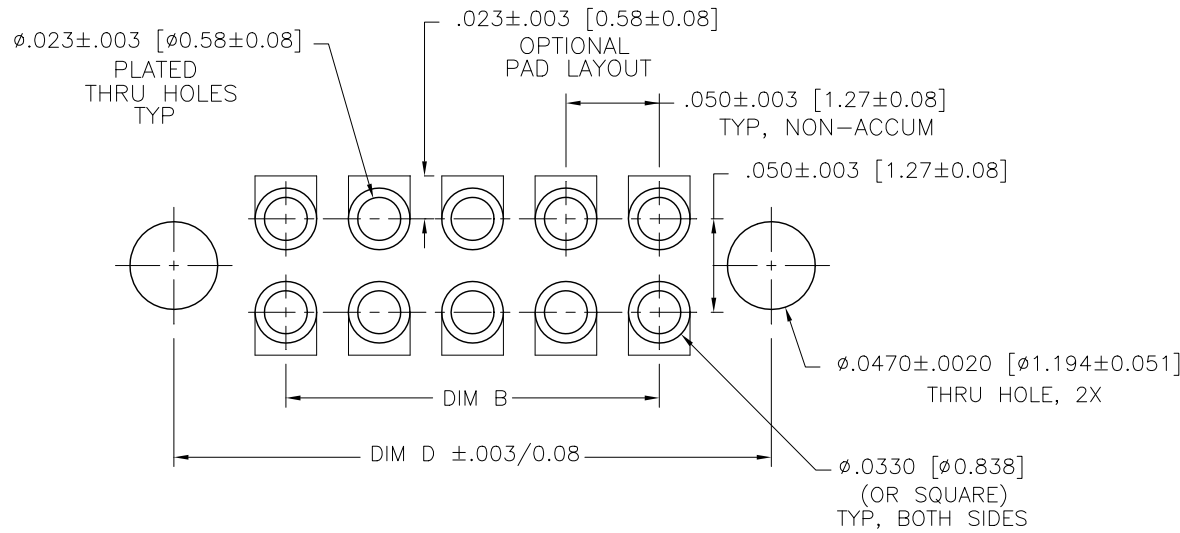


FIGURE A
RECOMMENDED
P.C.B. LAYOUT

mat'l. code		surface		tolerance		projection		product family	
-		ISO 1302 ✓		ISO 406 ISO 1101				RIB CAGE	
ltr	ecn	no	dr	date	tolerances unless otherwise specified		title		
F					angles	linear	INCH/MM		.050/1.27cc V.C.C. THRU MT.
						xx ±.01/.3	scale 4:1		W/POL. FEATURES
					σ±2'	xxx ±.005/.13			
						xxxx ±.0020/.050			
			dr	E.KROPIENICKI	9/07/99	dwg no			
			enr	D. WHITING	9/07/99	sheet 2 of 2		size	
			chr	D. WHITING	9/07/99	98386		A3	
			appd	D. WHITING	9/07/99	type Product Customer Drawing			
sheet	revision								
index	sheet								