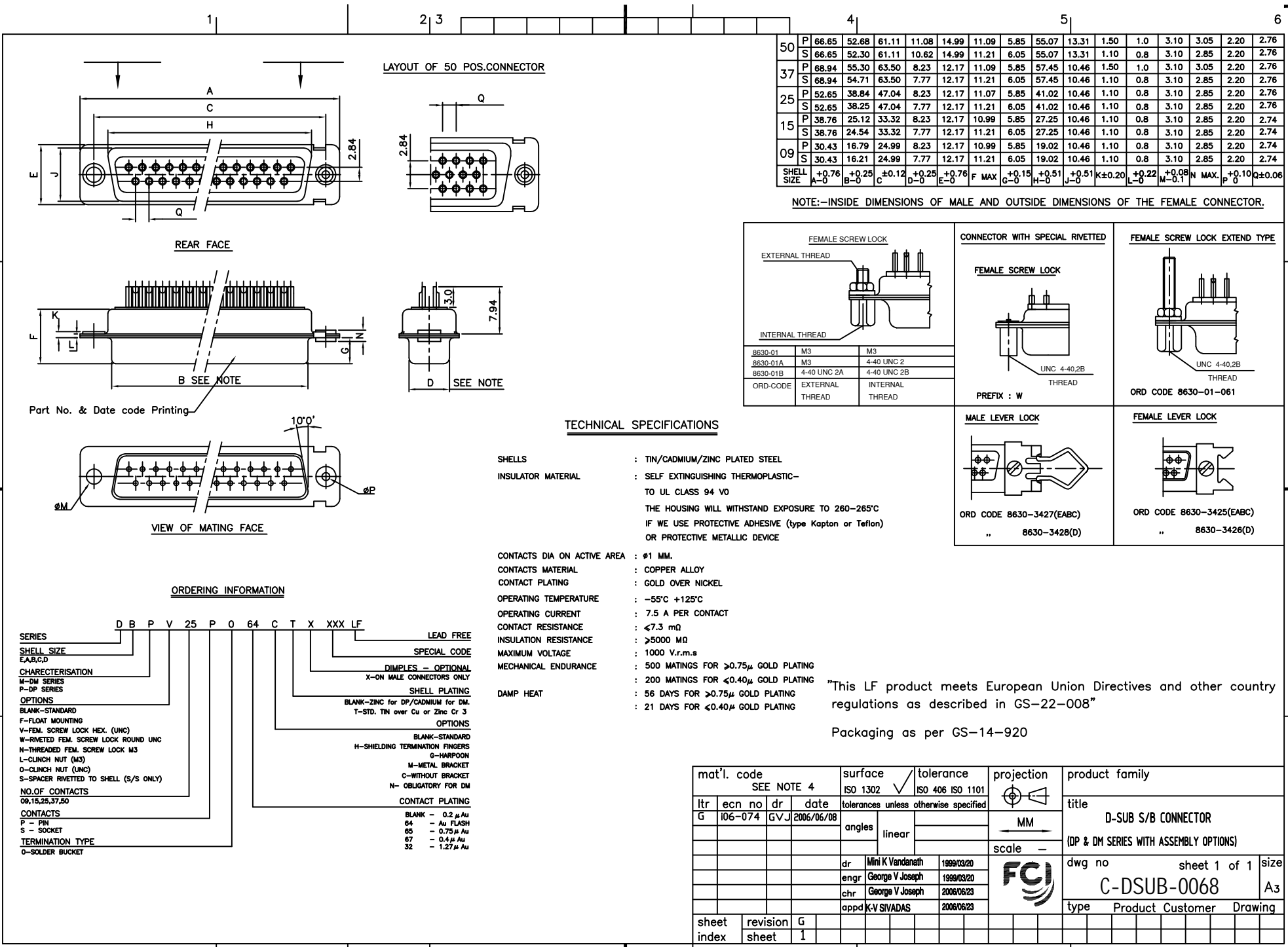




FCIconnect.com

Copyright FCI



50	P	66.65	52.68	61.11	11.08	14.99	11.09	5.85	55.07	13.31	1.50	1.0	3.10	3.05	2.20	2.76										
	S	66.85	52.30	61.11	10.62	14.99	11.21	6.05	55.07	13.31	1.10	0.8	3.10	2.85	2.20	2.76										
37	P	68.94	55.30	63.50	8.23	12.17	11.09	5.85	57.45	10.46	1.50	1.0	3.10	3.05	2.20	2.76										
	S	68.94	54.71	63.50	7.77	12.17	11.21	6.05	57.45	10.46	1.10	0.8	3.10	2.85	2.20	2.76										
25	P	52.65	38.84	47.04	8.23	12.17	11.07	5.85	41.02	10.46	1.10	0.8	3.10	2.85	2.20	2.76										
	S	52.65	38.25	47.04	7.77	12.17	11.21	6.05	41.02	10.46	1.10	0.8	3.10	2.85	2.20	2.76										
15	P	38.76	25.12	33.32	8.23	12.17	10.99	5.85	27.25	10.46	1.10	0.8	3.10	2.85	2.20	2.74										
	S	38.76	24.54	33.32	7.77	12.17	11.21	6.05	27.25	10.46	1.10	0.8	3.10	2.85	2.20	2.74										
09	P	30.43	16.79	24.99	8.23	12.17	10.99	5.85	19.02	10.46	1.10	0.8	3.10	2.85	2.20	2.74										
	S	30.43	16.21	24.99	7.77	12.17	11.21	6.05	19.02	10.46	1.10	0.8	3.10	2.85	2.20	2.74										
SHELL SIZE		A-0	+0.76	+0.25	B-0	±0.12	+0.25	C	D-0	+0.76	E-0	F MAX	G-0	+0.15	H-0	+0.51	J-0	K±0.20	L-0	+0.22	M-0.1	+0.08	N MAX	P	+0.10	Q±0.06

NOTE:-INSIDE DIMENSIONS OF MALE AND OUTSIDE DIMENSIONS OF THE FEMALE CONNECTOR.

FEMALE SCREW LOCK EXTERNAL THREAD INTERNAL THREAD <table border="1"> <tr><td>8630-01</td><td>M3</td><td>M3</td></tr> <tr><td>8630-01A</td><td>M3</td><td>4-40 UNC 2</td></tr> <tr><td>8630-01B</td><td>4-40 UNC 2A</td><td>4-40 UNC 2B</td></tr> </table>			8630-01	M3	M3	8630-01A	M3	4-40 UNC 2	8630-01B	4-40 UNC 2A	4-40 UNC 2B	CONNECTOR WITH SPECIAL RIVETTED FEMALE SCREW LOCK UNF 4-40,2B THREAD PREFIX : W	FEMALE SCREW LOCK EXTEND TYPE UNF 4-40,2B THREAD ORD CODE 8630-01-061
8630-01	M3	M3											
8630-01A	M3	4-40 UNC 2											
8630-01B	4-40 UNC 2A	4-40 UNC 2B											
MALE LEVER LOCK ORD CODE 8630-3427(EABC) .. 8630-3428(D)			FEMALE LEVER LOCK ORD CODE 8630-3425(EABC) .. 8630-3426(D)										

TECHNICAL SPECIFICATIONS

- SHELLS : TIN/CADMIUM/ZINC PLATED STEEL
- INSULATOR MATERIAL : SELF EXTINGUISHING THERMOPLASTIC- TO UL CLASS 94 V0
- THE HOUSING WILL WITHSTAND EXPOSURE TO 260-265°C
- IF WE USE PROTECTIVE ADHESIVE (type Kapton or Teflon) OR PROTECTIVE METALLIC DEVICE
- CONTACTS DIA ON ACTIVE AREA : Ø1 MM.
- CONTACTS MATERIAL : COPPER ALLOY
- CONTACT PLATING : GOLD OVER NICKEL
- OPERATING TEMPERATURE : -55°C +125°C
- OPERATING CURRENT : 7.5 A PER CONTACT
- CONTACT RESISTANCE : <7.3 mΩ
- INSULATION RESISTANCE : >5000 MΩ
- MAXIMUM VOLTAGE : 1000 V.r.m.s
- MECHANICAL ENDURANCE : 500 MATINGS FOR >0.75µ GOLD PLATING
- 200 MATINGS FOR <0.40µ GOLD PLATING
- 56 DAYS FOR >0.75µ GOLD PLATING
- 21 DAYS FOR <0.40µ GOLD PLATING
- DAMP HEAT

"This LF product meets European Union Directives and other country regulations as described in GS-22-008"

Packaging as per GS-14-920

ORDERING INFORMATION

SERIES: D B P V 25 P 0 64 C T X XXX LF LEAD FREE

SHELL SIZE: E,A,B,C,D

CHARACTERISATION: M-DM SERIES, P-DP SERIES

OPTIONS: BLANK-STANDARD, F-FLOAT MOUNTING, V-FEM. SCREW LOCK HEX. (UNC), W-RIVETTED FEM. SCREW LOCK ROUND UNC, H-THREADED FEM. SCREW LOCK M3, L-CLINCH NUT (M3), O-CLINCH NUT (UNC), S-SPACER RIVETTED TO SHELL (S/S ONLY)

NO.OF CONTACTS: 06,15,25,37,50

CONTACTS: P - FIN, S - SOCKET

TERMINATION TYPE: O-SOLDER BUCKET

SPECIAL CODE: DIMPLES - OPTIONAL, X-ON MALE CONNECTORS ONLY

SHELL PLATING: BLANK-ZINC for DP/CADMIUM for DM, T-STD. TIN over Cu or Zinc Cr 3

OPTIONS: BLANK-STANDARD, H-SHIELDING TERMINATION FINGERS, G-HARPOON, M-METAL BRACKET, C-WITHOUT BRACKET, N- OBLIGATORY FOR DM

CONTACT PLATING: BLANK - 0.2 µ Au, 64 - Au FLASH, 65 - 0.75 µ Au, 67 - 0.4 µ Au, 32 - 1.27 µ Au

mat'l. code		surface		tolerance		projection		product family	
SEE NOTE 4		ISO 1302		ISO 406 ISO 1101				D-SUB S/B CONNECTOR	
ltr	ecn no	dr	date	tolerances unless otherwise specified		MM		title	
G	106-074	GV J	2006/06/08	angles	linear			(DP & DM SERIES WITH ASSEMBLY OPTIONS)	
sheet index		revision	G	dr		scale		dwg no	
		sheet	1	Mini K Vandanath		1999/03/20		sheet 1 of 1	
				enrg		1999/03/20		size	
				chr		2006/06/23		A3	
				appd		2006/06/23		type	
				K-V SIVADAS				Product Customer Drawing	