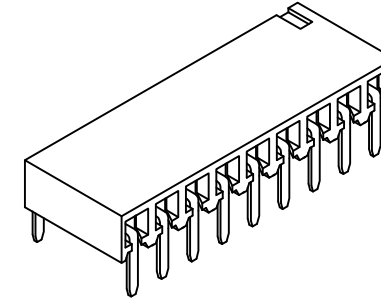
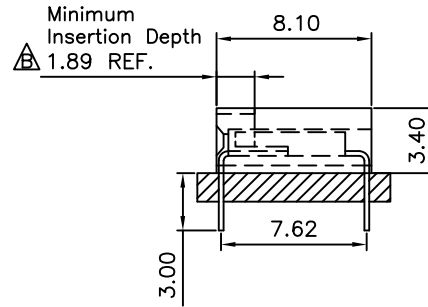
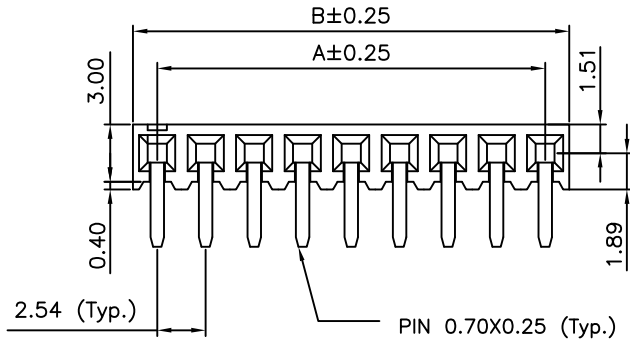
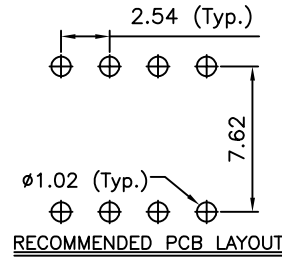
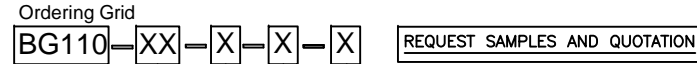


Global Connector Technology Ltd. - BG110: 2.54mm PITCH SOCKET, SINGLE ROW, THROUGH-HOLE, HORIZONTAL



CONTACTS	DIMENSIONS	
	A	B
2	2.54	5.08
3	5.08	7.62
4	7.62	10.16
5	10.16	12.70
6	12.70	15.24
7	15.24	17.78
8	17.78	20.32
9	20.32	22.86
10	22.86	25.40
11	25.40	27.94
12	27.94	30.48
13	30.48	33.02
14	33.02	35.56
15	35.56	38.10
16	38.10	40.64
17	40.64	43.18
18	43.18	45.72
19	45.72	48.26
20	48.26	50.80
21	50.80	53.34
22	53.34	55.88
23	55.88	58.42
24	58.42	60.96
25	60.96	63.50
26	63.50	66.04
27	66.04	68.58
28	68.58	71.12
29	71.12	73.66
30	73.66	76.20
31	76.20	78.74
32	78.74	81.28
33	81.28	83.82
34	83.82	86.36
35	86.36	88.90
36	88.90	91.44
37	91.44	93.98
38	93.98	96.52
39	96.52	99.06
40	99.06	101.60

SPECIFICATIONS 规格
 CURRENT RATING 电流额定值: 3 AMP
 INSULATOR RESISTANCE 绝缘电阻值: 1000 MEGOHMS MIN.
 DIELECTRIC WITHSTANDING 耐电压: AC 600 V
 CONTACT RESISTANCE 接触电阻值: 20mΩ Max.
 OPERATING TEMPERATURE 工作温度: -40°C TO +105°C
 CONTACT MATERIAL 端子物料: COPPER ALLOY
 CONTACT PLATING: GOLD/TIN OVER NICKEL
 INSULATOR MATERIAL 绝缘体物料:
 STANDARD 标准物料: POLYAMIDE 聚酰胺, NYLON 6T, UL 94-V0
 OPTIONS 可选物料: POLYESTER 聚酯, LCP, UL 94-V0
 OR POLYESTER 聚酯, PBT, UL94-V0
 SOLDERING PROCESS 可焊性:
 NYLON 6T (STANDARD 标准物料) -
 IR REFLOW 回流焊: 260°C for 10 sec.
 WAVE 波峰焊: 230°C for 5-10 sec.
 MANUAL SOLDER 人工焊接: 350°C for 3-5 sec
 PBT (OPTION 可选物料) - MANUAL SOLDER 人工焊接: 330°C for 3-5 sec.
 (NOT SUITABLE FOR HI-TEMP PROCESS 不适合高温处理)
 LCP (OPTION 可选物料) -
 IR REFLOW 回流焊: 260°C for 10 sec.
 WAVE 波峰焊: 250°C for 5-10 sec.
 MANUAL SOLDER 人工焊接: 350°C for 3-5 sec.
 MATES WITH 配套之母座 (SUBJECT TO PIN LENGTH 在端子长度适合的条件下):
 BG020 BG030 BG035 BG055 BG060
 BG075 BG080



No. of Contacts 02 to 40

Contact Plating
 A = Gold Flash All Over
 B = Selective Gold Flash Contact
 Area/Tin On Tail
 C = Tin All Over
 G = 10µ" Gold Contact Area/Tin On Tail
 I = 30µ" Gold Contact Area/Tin On Tail
Standard = Gold Flash All Over

Packing Options
D = Tube (Standard)
 G = Plastic Box

Insulator Material
N = Nylon 6T (Standard)
 P = PBT
 L = LCP

By	LYH	PN	PN	CB	DR
DETAIL	DRAWING RELEASE	DIMENSION AMENDMENT	STANDARD INSULATOR MATERIAL CHANGED	PACKING OPTIONS CHANGED	CHANGE TO SOLDER TEMP. INFORMATION
REV DATE	A 30/10/06	B 09/03/09	C 12/03/09	D 27/04/09	E 05/08/09



Tolerances (Except as noted)	Part Number:-	Date:-
Dimensions in mm	BG110	30 OCT 06
X. ± 0.30 X.° ± 5°	Description:-	
X.X ± 0.20 X.° ± 2°	2.54mm PITCH SOCKET, SINGLE ROW, THROUGH-HOLE, HORIZONTAL	
X.XX ± 0.15 XX° ± 1°		
X.XXX ± 0.10 XXX° ± 0.5°		
Third Angle Projection	THIS DRAWING IS CONFIDENTIAL AND MUST NOT BE COPIED OR DISCLOSED WITHOUT WRITTEN CONSENT	

Global Connector Technology

www.globalconnectortechnology.com

Scale NTS
 Revision E
 Material See Note
 Drawn by LYH
 Sheet No. E & OE 1/1