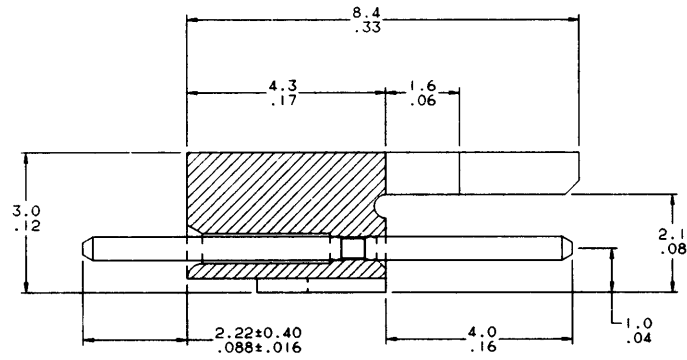
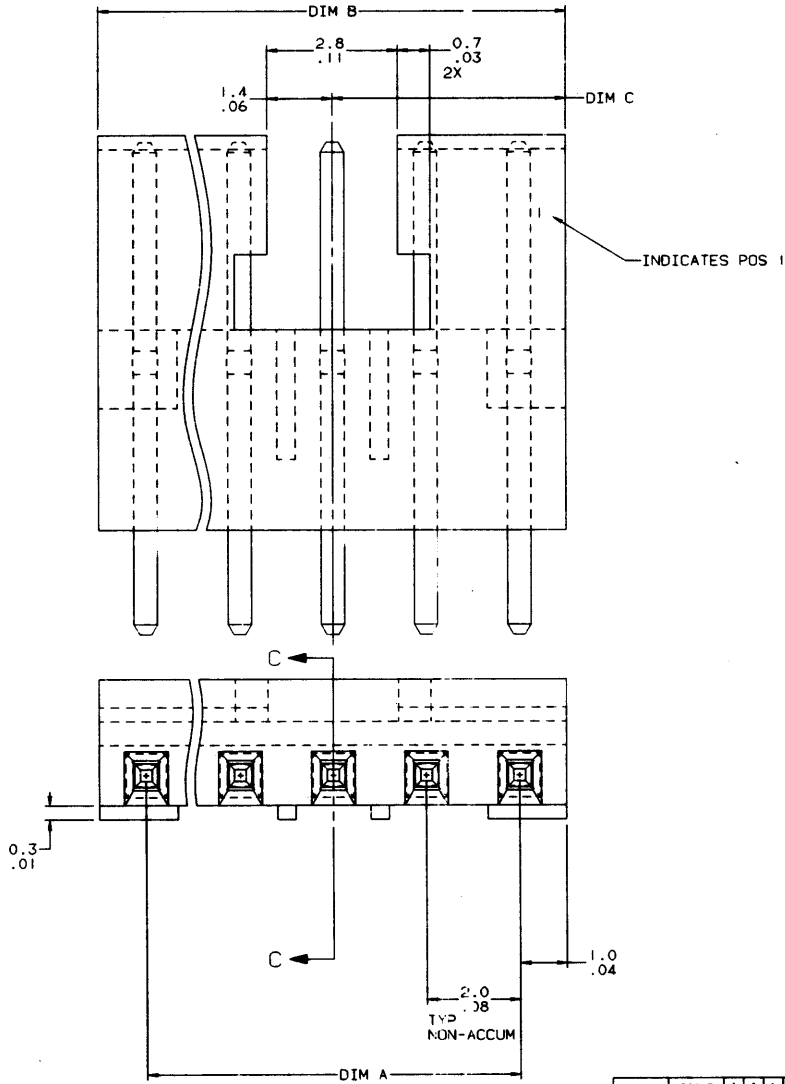


PRODUCT NO  
SEE TABLE



REVISIONS

REV	DESCRIPTION	BY	DATE
A	ECR-V22880 RELEASED	AR	10/23/92

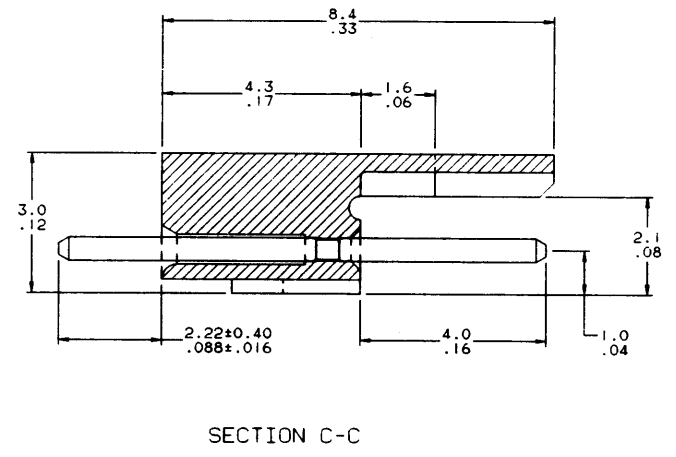
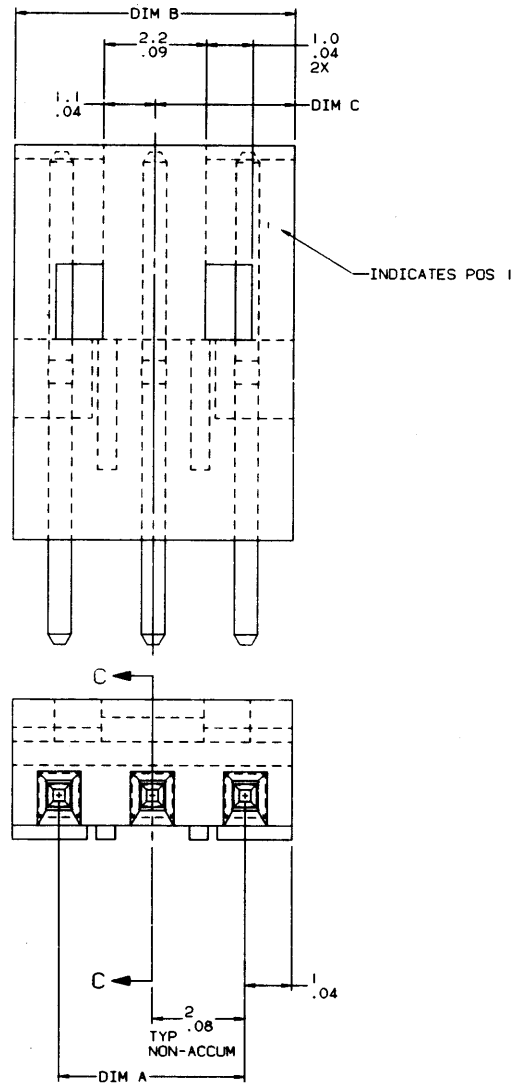
SHEET INDEX	ISSUE	A	A	A	CUSTOMER COPY	
	SH NO	1	2	3	CODE IDENT 22526	
MODEL		DO NOT SCALE DRAWING			DATE	
SK-27780		TOLERANCE UNLESS OTHERWISE NOTED			10/23/92	
		MM/INCH			DR	
		.01, .3/, .00±.01			A. RAISTRICK	
		.00±.13/, .000±.005			CHK	
		.000±.051/, .0000±.0020			S OLSON	
		ANGLES 0° ±2°			ENGR	
TABULATION		THIRD ANGLE PROJECTION			S OLSON	
SHEETS REQUIRED		SI MM INCH			10/23/92	
YES					APPD	
NO					S OLSON	
					10/23/92	
					SCALE	
					SIZE	
					DWG NO	
					92990	
					SHEET	
					1 OF 3	



TITLE MINITEK TMT ASSY. SGL ROW POLARIZATION & LATCHING STRAIGHT PIN W/O LOCATOR

NOTE: This print is the property of and embodies proprietary designs of THE DUPONT COMPANY. No part of the design shown on this print may be used in any way without the written consent of DUPONT ELECTRONICS, New Cumberland, PA.

PRODUCT NO  
SEE TABLE



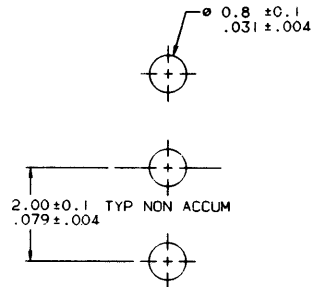
REVISIONS			
REV	DESCRIPTION	BY	DATE
A			

SHEET INDEX		ISSUE		MODEL		DO NOT SCALE DRAWING		TOLERANCE UNLESS OTHERWISE NOTED		MATERIAL		DRAWN		DATE		CUSTOMER COPY	
SH	NO	NO	NO					MM/INCH									22526
								LINEAR			FINISH		ENGR		TITLE		DUPOINT
								.001/.0015/.0005			S OLSON		10/23/92		MINITEK TMT ASSY, SGL ROW		
TABULATION SHEETS REQUIRED		YES/NO		SI		MM/INCH		.0005/.001/.0005/.0020				S OLSON		10/23/92		POLARIZATION & LATCHING STRAIGHT PIN W/O LOCATOR	
								ANGLES 0° ± 2°				S OLSON		10/23/92		SCALE SIZE DWG NO CAD SHEET	
												20/1		D		92990 2	

NOTE: This print is the property of and contains proprietary designs of THE DUPOINT COMPANY. No part of the design shown on this print may be used in any way without the written consent of DUPOINT ELECTRONICS, New Cumberland, PA.

PRODUCT NO	POSITIONS	DIM A	DIM B	% OF LATCH DIM C	PLATING OPTIONS
92990-X03	1 X 3	4.0/.16	6.0/.24	3.0/.12	0 = .2μ/8μ" AU OVER 1.27μ/50μ" NI
-X04	1 X 4	6.0/.24	8.0/.32	4.0/.16	1 = .76μ/30μ" AU OVER 1.27μ/50μ" NI
-X05	1 X 5	8.0/.32	10.0/.39	5.0/.20	2 UNASSIGNED
-X06	1 X 6	10.0/.39	12.0/.47	6.0/.24	3 = .38μ/15μ" AU OVER 1.27μ/50μ" NI
-X07	1 X 7	12.0/.47	14.0/.55	7.0/.28	4 UNASSIGNED
-X08	1 X 8	14.0/.55	16.0/.63	8.0/.32	5 = .38μ/15μ" GXT OVER 1.27μ/50μ" NI
-X09	1 X 9	16.0/.63	18.0/.71	9.0/.35	6 = .76μ/30μ" GXT OVER 1.27μ/50μ" NI
-X10	1 X 10	18.0/.71	20.0/.79	10.0/.39	
-X11	1 X 11	20.0/.79	22.0/.87	11.0/.43	
-X12	1 X 12	22.0/.87	24.0/.95	12.0/.47	
-X13	1 X 13	24.0/.95	26.0/1.02	13.0/.51	
-X14	1 X 14	26.0/1.02	28.0/1.10	14.0/.55	
-X15	1 X 15	28.0/1.10	30.0/1.18	15.0/.59	
-X16	1 X 16	30.0/1.18	32.0/1.26	16.0/.63	
92990-X17	1 X 17	32.0/1.26	34.0/1.34	17.0/.67	

REVISIONS			
REV	DESCRIPTION	BY	DATE
A			



RECOMMENDED MOUNTING HOLE LAYOUT

NOTE

- HOUSING MATERIAL: LCP.
- TERMINAL MATERIAL: PHOS BRONZE.
- PRODUCT DESCRIPTION CODE: XXXXX-X XX
  - XXXXX - TOTAL POSITIONS.
  - X - PLATING.
  - XX - BASE NUMBER.
- T TYPE LATCH ONLY 1X4 POS AND ABOVE.

SHEET INDEX		ISSUE		SH NO		1		CUSTOMER COPY		CODE IDENT		22526			
MODEL		DO NOT SCALE DRAWING		TOLERANCE UNLESS OTHERWISE NOTED		MM/INCH		MATERIAL		DR		DATE			
				.01, .3/.00±.01				-		M. CLOUSER		10/23/92		TITLE MINITEK TMT ASSY, SGL ROW POLARIZATION & LATCHING STRAIGHT PIN W/O LOCATOR	
				.00±.13/.000±.005				FINISH		CHK		10/23/92		SCALE SIZE DWG NO CAD	
TABULATION SHEETS REQUIRED		YES		.000±.051/.000±.0020						ENGR		10/23/92		SHEET 3	
NO		NO		ANGLES 0°±2°						APPD		10/23/92		92990	
SI		MM								S OLSON				D	

NOTE: This print is the property of and embodies proprietary designs of THE DUPONT COMPANY. No part of the design shown on this print may be used in any way without the written consent of DUPONT ELECTRONICS, New Cumberland, PA.