

SPECIFICATIONS

Header Connector

Mechanical

Contact Retention Force: 0.454Kgf min. Per Pin

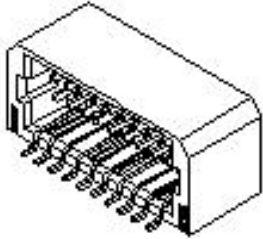
HT12 Series
Shrouded, SMT Type
Plug
1.00mm [.039"] Pitch

Electrical

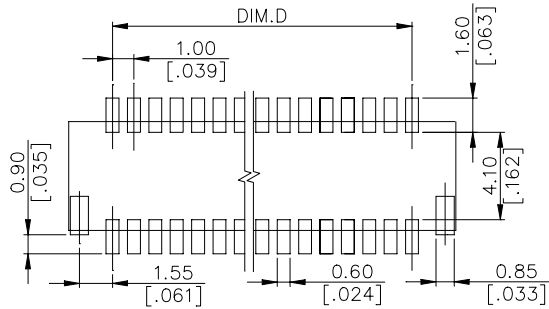
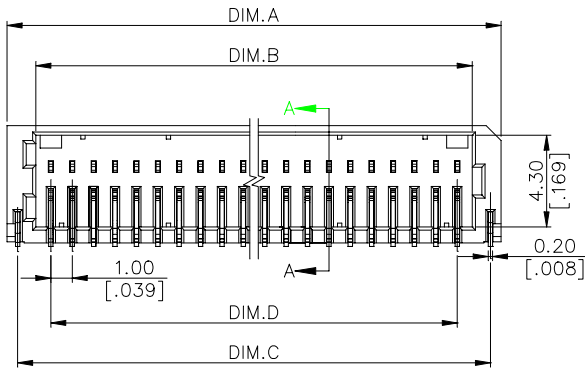
Voltage Rating: 50V
 Current Rating: 1.0A max. per pin
 Dielectric Withstanding Voltage: 500V AC
 Insulation Resistance: 100MΩ min.

Physical

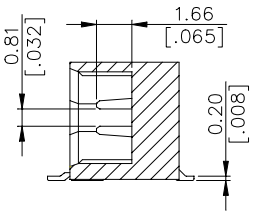
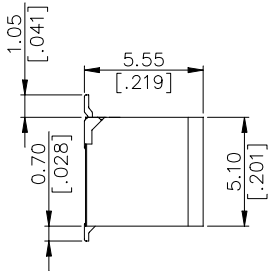
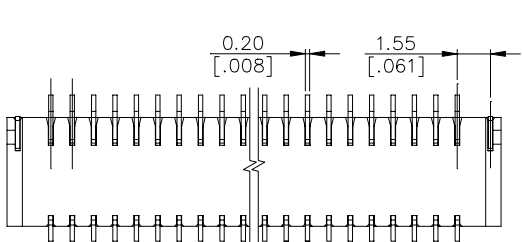
Housing: High Temperature Nylon, UL 94V-0 Rating, Color Ivory
 Contact: Copper alloy
 Plating: See "ORDERING INFORMATION"
 Operating Temperature: -40 to +105



DRAWING



RECOMMENDED P.C.B. LAYOUT



SEC A-A
 SCALE: 1:1

ORDERING INFORMATION

HT12***
 H: HEADER
 T: SHROUDED & D/R
 1: TERMINATION & CONTACT TYPE
 2: NO. OF SINGLE ROW POS.
 3: CONTACT AREA PLATING.
 F=GOLD FLASH WITH RoHS COMPLIANCE
 E=100u" MIN. TIN WITH RoHS COMPLIANCE.
 V=15 u" GOLD PLATING WITH RoHS COMPLIANCE
 J=10 u" GOLD PLATING WITH RoHS COMPLIANCE

01=2 POS.
 02=4 POS.
 03=6 POS.

HT1230*	60	33.1	30.40	32.10	29.00
HT1225*	50	28.1	25.40	27.10	24.00
HT1220*	40	23.1	20.40	22.10	19.00
HT1215*	30	18.1	15.40	17.10	14.00
HT1210*	20	13.1	10.40	12.10	9.00
P/N	POS.	DIM.A	DIM.B	DIM.C	DIM.D

All specification & dimensions are subject to change, please call your nearest Foxconn sales representative for update information.