



# SENSITRON SEMICONDUCTOR

221 West Industry Court • Deer Park, NY 11729  
Telephone: (516) 586-7600 • Telex 96-7737  
FAX 516 242 9798

## TECHNICAL SPECIFICATIONS

### SINGLE PHASE BRIDGE RECTIFIER

AVAILABLE WITH  
JAN, JANTX AND  
JANTXV INTERNAL  
RECTIFIERS

### Electrical Specifications

#### SINGLE PHASE SILICON BRIDGE RECTIFIER ASSEMBLIES

TYPE NUMBER	PIV PER LEG	MAX AVERAGE <sup>①</sup> D.C. OUTPUT CURRENT			PEAK 1 CY SUR CUR	PEAK RECUR SURGE	MAX FWD VOLTAGE PER LEG		MAX REVERSE CURRENT AT PIV/LEG		<sup>②</sup> MAX REC TIME
		AMPS AT T <sub>A</sub>					25°C	25°C	25°C		
		V	25°C	55°C	100°C	AMPS	AMPS	V	A	25°C	100°C
S459DH	200	1.5	1.2	0.75	50	15	1.1	1.0	2.0	50	5000
S459FH	400	1.5	1.2	0.75	50	15	1.1	1.0	2.0	50	5000
S459GH	600	1.5	1.2	0.75	50	15	1.1	1.0	2.0	50	5000
S459HH	800	1.5	1.2	0.75	50	15	1.1	1.0	2.0	50	5000
S459IH	1000	1.5	1.2	0.75	50	15	1.1	1.0	2.0	50	5000

Sensitron's high current rectifier assemblies are of the cold case aluminum design. These assemblies will meet the stringent requirements of military and industrial product applications. This rugged mechanical construction combined with permanently stable electrical characteristics makes Sensitron's assemblies the ultimate in quality and reliability.

- ① T<sub>A</sub> = Ambient Temperature, Convection Cooled
- ② Recovery Conditions I<sub>F</sub> = 0.5A, I<sub>R</sub> = 1.0A, trr measured when rectifier recovers to 0.25 Amps  
Recovery Time measured on discrete diodes prior to assembly  
Operating and Storage Temperature -55°C to +150°C

#### MECHANICAL CHARACTERISTICS

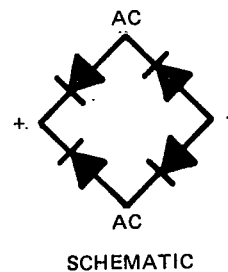
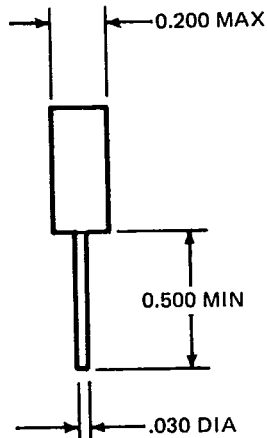
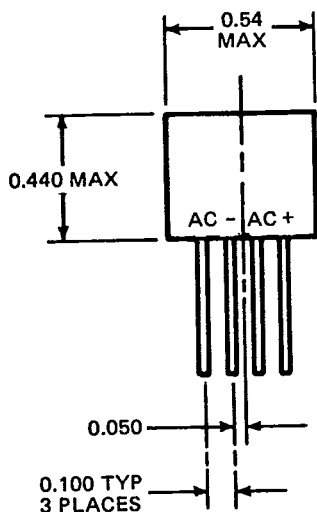
Case: Epoxy

Internal Rectifiers: Non-Cavity Metallurgically Bonded Glass Hermetic Axial Lead Rectifiers

MECHANICAL DIMENSIONS FOR RECTIFIER ASSEMBLIES

TOLERANCES-INCHES XX ±.020  
XXX ±.010

METRIC XX ±(.508) (EXCEPT AS NOTED)  
XXX ±(.254)



CHARACTERISTIC CURVES

