

**SPECIFICATIONS**

**Friction Header Connector**

**Mechanical**

**Contact Retention Force:** 1.36 KGF Min  
**Durability:** 500 Cycles

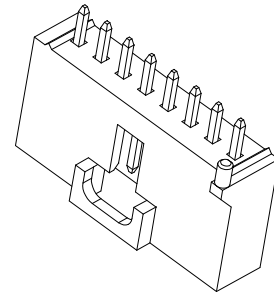
**HF11 Series**  
**Friction T/H Type**  
**2.54mm [.100"] Pitch**

**Electrical**

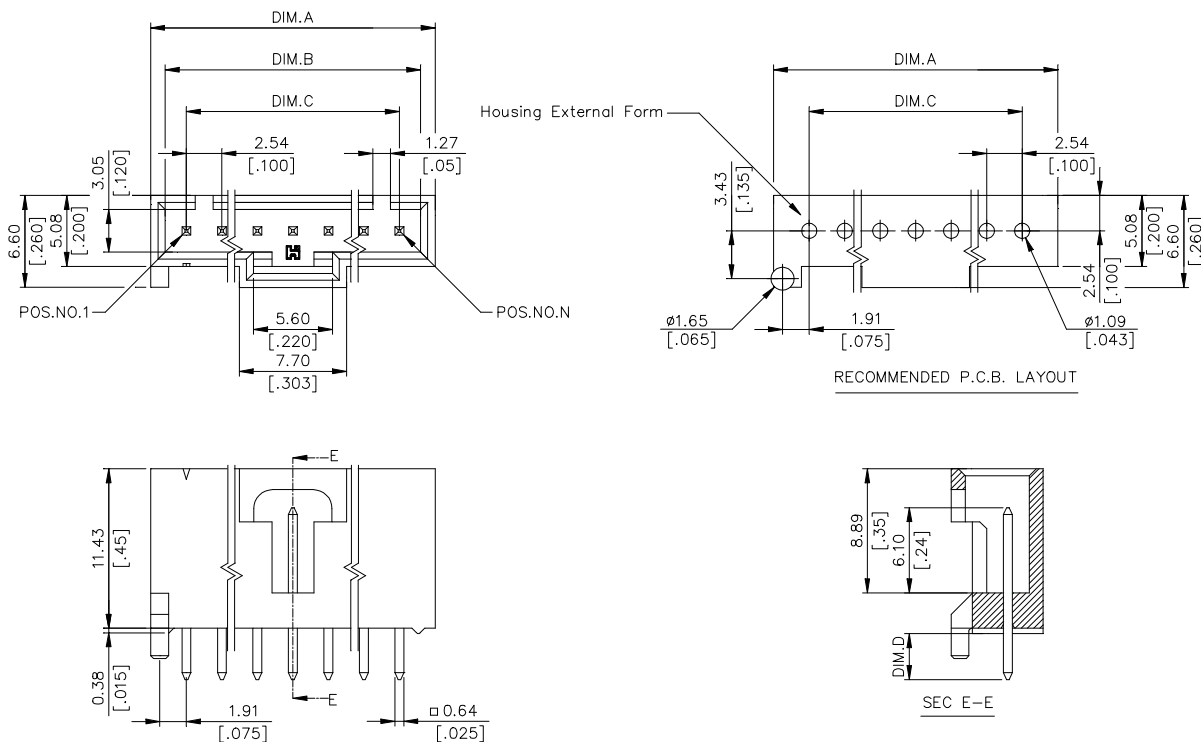
**Voltage Rating:** 600V  
**Current Rating:** 3.0A per pin min  
**Contact Resistance:** 30mW max  
**Insulation Resistance:** 1000MW min

**Physical**

**Housing:** Thermoplastic, Glass Filled, UL94V-0 Rating  
**Contact:** Copper Alloy  
**Plating:** See "ORDERING INFORMATION"  
**Operating Temperature:** -50 to +105



**DRAWING**



**ORDERING INFORMATION**

**PRODUCT NO.:** HF11\*\*\*-\*\*

Header \_\_\_\_\_  
 High Friction Header \_\_\_\_\_  
 Termination & Contact Type \_\_\_\_\_  
 No. Of Pos \_\_\_\_\_  
 2=2 Pos  
 3=3 Pos  
 4=4 Pos  
 5=5 Pos  
 6=6 Pos  
 8=8 Pos  
 9=9 Pos  
 10=10 Pos

**Optional For Modification Code**  
 NONE: NO GUIDE POST, DIM. D=3.30[.130]  
 P1: ONE GUIDE POST, DIM. D=3.30[.130]  
 C1: ONE GUIDE POST, DIM. D=2.30[.091]  
**Optional For Housing Color**  
 N : HOUSING COLOR IVORY  
 G : HOUSING COLOR GREEN  
 U : HOUSING COLOR BLUE  
 Y : HOUSING COLOR YELLOW  
 A : HOUSING COLOR GRAY  
**Optional For Plating**  
 0=100u" Tin/Lead  
 1=Gold Flash  
 E=100u" min. Tin with Lead free "RoHS Compliance"

HF1110*-***	10	27.99	25.91	22.86	
		[1.102]	[1.020]	[.900]	
HF1109*-***	9	25.45	23.37	20.32	
		[1.002]	[.920]	[.800]	
HF1108*-***	8	22.91	20.83	17.78	
		[.902]	[.820]	[.700]	
HF1106*-***	6	17.83	15.75	12.70	
		[.702]	[.620]	[.500]	
HF1105*-***	5	15.29	13.21	10.16	
		[.602]	[.520]	[.400]	
HF1104*-***	4	12.75	10.67	7.62	
		[.502]	[.420]	[.300]	
HF1103*-***	3	10.21	8.13	5.08	
		[.402]	[.320]	[.200]	
HF1102*-***	2	7.62	5.55	2.54	
		[.300]	[.219]	[.100]	
P/N		POS.	DIM. A	DIM. B	DIM. C