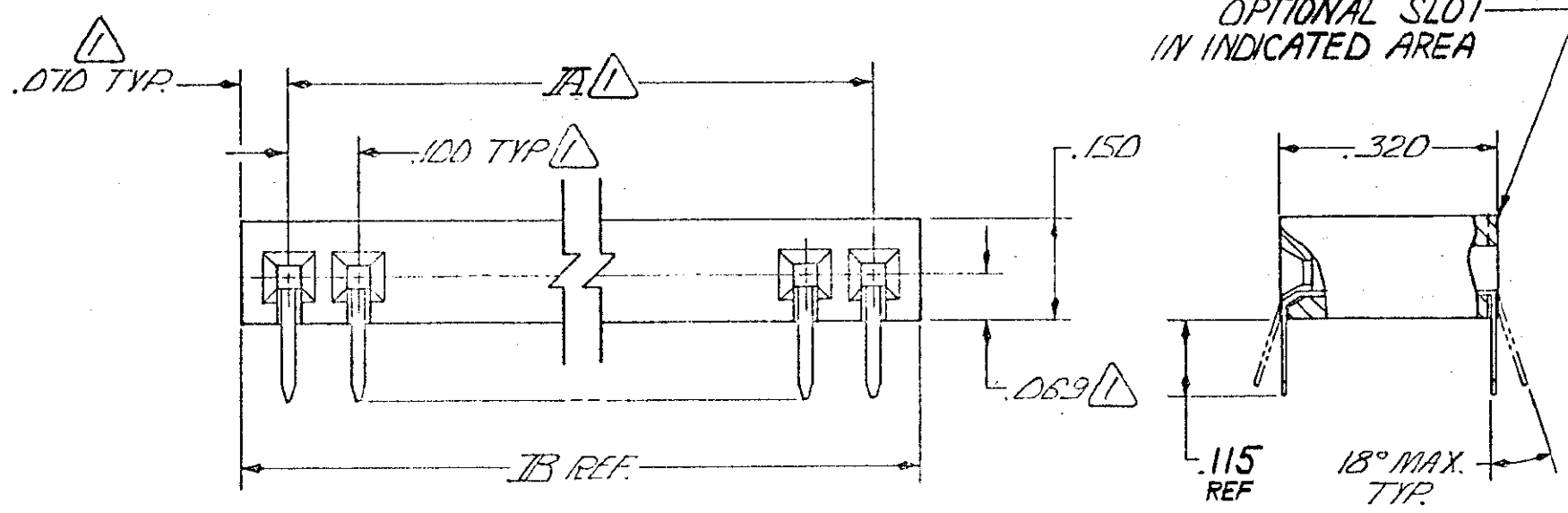
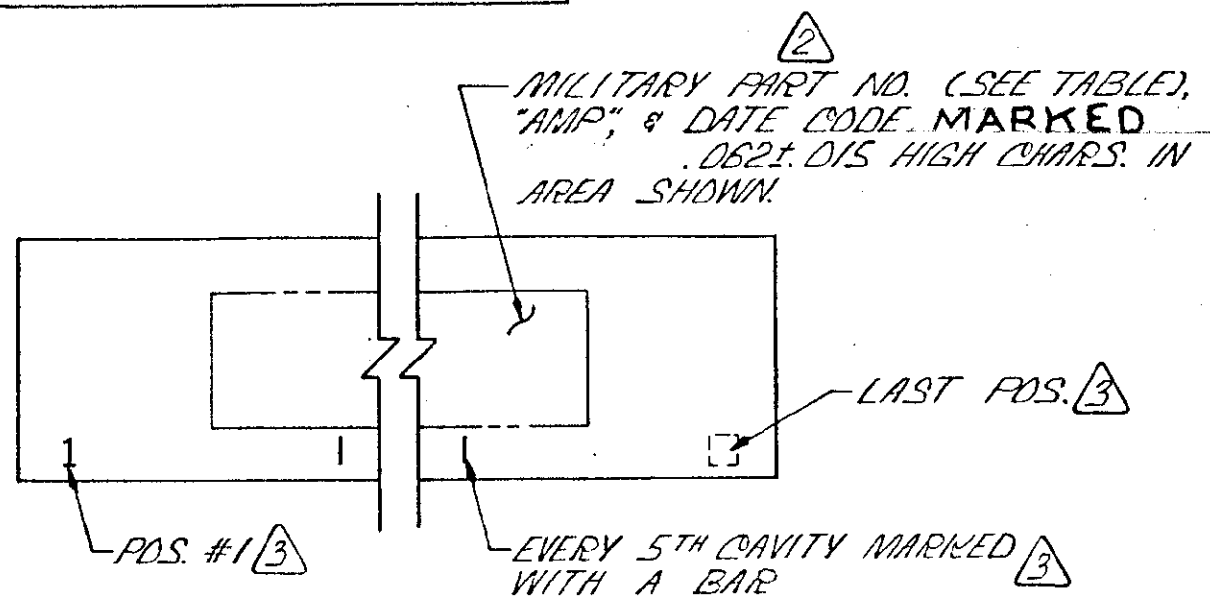
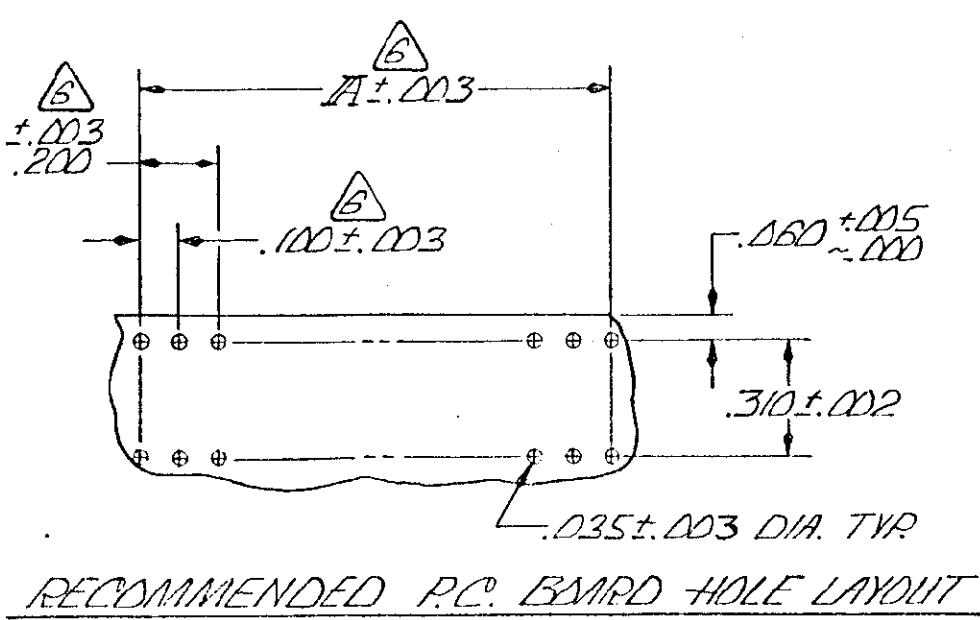


© COPYRIGHT 19 BY AMP INCORPORATED, HARRISBURG, PA.  
ALL INTERNATIONAL RIGHTS RESERVED. AMP INCORPORATED PRODUCTS  
COVERED BY U. S. AND FOREIGN PATENTS AND/OR PATENTS PENDING.



- 1 THESE DIMENSIONS PERTAIN TO CAVITY CENTERLINES ONLY, NOT TO CONTACT LOCATIONS.
- 2 WHEN PART IS PHYSICALLY TOO SMALL FOR THIS INFORMATION (SMALLER THAN 10 PDS.) MARK AS FOLLOWS:  
2, 3, & 4 PDS. - "AMP" ONLY.  
5 THRU 9 PDS. - MILITARY PART NO. ONLY.
- 3 MARK .062±.015 HIGH CHARACTERS IN AREA SHOWN.
- 4 QUALITY CONFORMANCE INSPECTION PER MIL-C-55302 GROUP A, B, & C.
- 5 PACKAGED PER MIL-C-55302
- 6 TOLERANCE NON-CUMULATIVE.
- 7 OBSOLETE
- 8. MARK "CSA" LOGO ON PART.



REVISIONS					
P	F	ZONE	LTR	DESCRIPTION	DATE APPROVED
0	✓			RELEASED	
01	✓			OBS. AD-2064 m.s.	2-88
A	✓			ECN AD-2626 TH	6/88
A1	✓			REACTIVATE 1--6:AD-3054 db	10/88
A2	✓			ECN AD-2977 db	2-89
B	✓			ECN AD-3029 KIH	2-90
C	✓			ECN AD-5302 KIH	2-91
D	✓			REACTIVATE -39 KIH	07-00-91
E	✓			REV PER 0600-5131-96 TA	6/19/91
F	✓			REV PER 0600-5602 TT	8-97
G	✓			REV PER 0600-6693-97 JY	7-98
H	✓			REV PER 0630-0286-00 CS	11-00

MILITARY PART NO.	IB	IA	NO. OF PDS.	PART NUMBER	MILITARY PART NO.	IB	IA	NO. OF PDS.	PART NUMBER
M55302/127-361B	3.640	3.500	36	3-87968-5					
-351B	3.540	3.400	35	3-					
-341B	3.440	3.300	34	3-					
-331B	3.340	3.200	33	3-					
-321B	3.240	3.100	32	3-					
-311B	3.140	3.000	31	3-					
-301B	3.040	2.900	30	2-					
-291B	2.940	2.800	29	2-					
-281B	2.840	2.700	28	2-					
-271B	2.740	2.600	27	2-					
-261B	2.640	2.500	26	2-					
-251B	2.540	2.400	25	2-					
-241B	2.440	2.300	24	2-					
-231B	2.340	2.200	23	2-					
-221B	2.240	2.100	22	2-					
-211B	2.140	2.000	21	2-					
-201B	2.040	1.900	20	1-					
-191B	1.940	1.800	19	1-					
-181B	1.840	1.700	18	1-					
-171B	1.740	1.600	17	1-					
-161B	1.640	1.500	16	1-					
-151B	1.540	1.400	15	1-					
-141B	1.440	1.300	14	1-					
-131B	1.340	1.200	13	1-					
-121B	1.240	1.100	12	1-					
-111B	1.140	1.000	11	1-					
-101B	1.040	.900	10						
-091B	.940	.800	9						
-081B	.840	.700	8						
-071B	.740	.600	7						
-061B	.640	.500	6						
-051B	.540	.400	5						
-041B	.440	.300	4						
-031B	.340	.200	3						
M55302/127-371B	3.740	3.600	37	3-87968-6	M55302/127-021B	.240	.100	2	87968-1

UNLESS OTHERWISE SPECIFIED DIMENSIONS ARE IN INCHES. TOLERANCES ON: DECIMALS ± .010 ANGLES ± .010	CONTRACT NO DR J. Super 1/12/79	AMP INCORPORATED Harrisburg, Pa.
	MATERIAL HSS. - DIALYL FTHALATE, COLOR - BLUE CONTACTS - PHOS. BRONZE FINISH CONTACTS - .000050 GOLD OVER .000050 - .000100 NICKEL	
CHECKED: J.E. Seibert 1-18-79 APPD: A.R. Hoffman 1-19-79 APPD: CRK 2/11/81	DSGN APPD OTHER APPD	SIZE CODE IDENT NO DRAWING NO C 00779 87968
	SCALE #	SHEET 1 OF 1

- [Home](#)
- [Part Number Search](#)
- [Text Search](#)
- [Alternate Part Search](#)
- [Multiple Part Comparison](#)
- [Alphabetical Search](#)
- [Brand Search](#)
- [Industry Product Search](#)
- [Product Type Search](#)
- [Product Family Search](#)
- [Competitor Cross Reference](#)
- [Document Number Search](#)
- [Lead Free Solutions](#)
- [Help/Glossary](#)

<b>Current Brand View</b>	<a href="#">AMP</a>	<a href="#">View All Tyco Electronics Brands</a> <small>Click to activate links to all other products</small>
---------------------------	---------------------	--

## AMPMODU

### [.100 & .150 Centerline Receptacle Assemblies, End Stackable](#)

[AMP](#) **87968-1** -- 9 of 9 products [Active](#) [Active](#)

**(Tyco Electronics P/N: 87968-1)**

<a href="#">Previous</a>	<a href="#">Sales Information</a>	<a href="#">AMP ACES</a>	<a href="#">Step Search Screen</a>
		<a href="#">Related Documents</a>	<a href="#">General Information</a>
		<a href="#">Pricing</a>	<a href="#">Product Availability</a>

**Please use the customer drawing for all design activity.**

- **Customer Drawing: 87968**, Rev. H  
Document Title: HOUSING ASS'Y., MOD II, SINGLE ROW, .100 CL  
[214034.pdf](#) [214034.pdf](#) (149K)

<b>Searchable Features:</b>	
<b>Brand:</b>	AMP
<b>No. of Positions:</b>	2
<b>No. of Rows:</b>	Single
<b>Profile:</b>	Standard
<b>Mount Angle:</b>	Right Angle
<b>Mounting Pattern (mm [in]):</b>	2.54 x 7.87 [.100 x .310 ]
<b>Contact Type:</b>	Dual Tine
<b>Military Qualification:</b>	Yes
<b>Centerline, Matrix (mm [in]):</b>	2.54 [.100]
<b>Military Part Number:</b>	M55302/127-041B
<b>Contact Mating Area Plating:</b>	Gold (50) over Nickel
<b>Closed Entry:</b>	Yes
<b>Side Stackable:</b>	No

<b>Other Properties:</b>	
<b>Housing Material:</b>	Diallyl Phthalate
<b>Housing Color:</b>	Blue
<b>Contact Material:</b>	Phosphor Bronze
<b>PCB Thickness (mm [in]):</b>	1.57 [0.062]
<b>Keying Plug Number:</b>	102188-1
<b>Military Specification:</b>	MIL-C-55302
<b>Comment:</b>	P/N 87968-3 is also assigned Military P/N M55302/127-041B.

<b>High Temperature Compatible:</b>	No
<b>Connector Series:</b>	Mod. II
<b>Termination Post Length (mm [in]):</b>	2.92 [0.115]

---

[Copyright](#) and [Privacy Statement](#)

Visit [Tyco International, Ltd.](#)

[Products](#) | [eCatalog](#) | [Brands](#) | [Industries](#) | [eCommerce](#) | [Customer Service](#) | [About](#) | [Home](#)