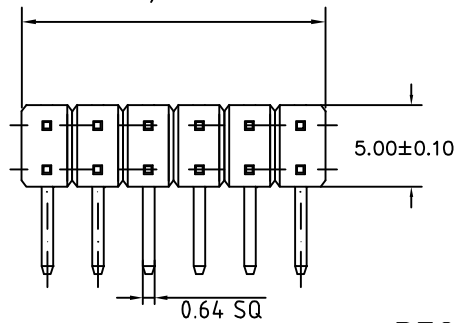
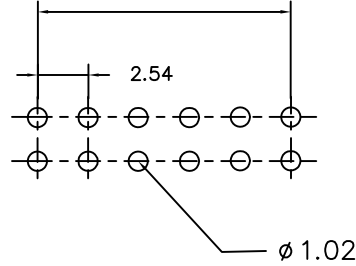


SIGN	DATE	DESCRIPTION	APPROVER
		<i>THIS IS CAD DRAWING, DO NOT REVISE MANUALLY!!!</i>	

CONTACTS/2x2.54±0.40

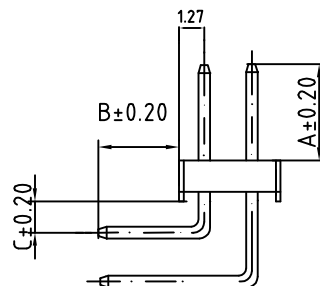
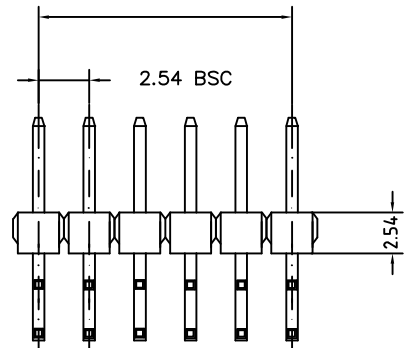


(CONTACTS/2-1)x2.54



RECOMMENDED P.C.B LAYOUT

(CONTACTS/2-1)x2.54±0.20



Dimensions in inches	
A	B
095	110
105	135
125	125
170	160
215	115
224	100
230	100
230	120
230	300
235	195
250	080
265	115
276	116
295	135
318	125
340	090
410	120
430	100
500	120
520	110
520	230
530	110
720	115
820	110

SPECIFICATIONS

Current Rating: 3A AC,DC
Voltage Rating: 250V AC,DC
Temperature Range: -25°C ~ +85°C
Contact Resistance: <20mΩ
Insulation Resistance: >1000MΩ
Withstanding Voltage: 1000V AC/minute
Insulator Material: Nylon 6T,UL94V-0
Contacts: Copper Alloys
Color: Black

RoHS Compliant

PART NUMBER:

PH4-XXX/XXX-XXX

A B
SEE CHART

No. of Pins
04-80

PLATING:
1: Full Flash Gold (STD)
5: Tin (STD)
6: Selective Gold Flash
7: Selective 15u" Gold
8: Selective 30u" Gold
9: Selective 50u" Gold
non STD may require MOQ



THESE DRAWINGS AND SPECIFICATIONS ARE THE PROPERTY OF ON-SHORE TECHNOLOGY, INC. AND SHALL NOT BE REPRODUCED, COPIED OR USED IN ANY MANNER WITHOUT THE PRIOR WRITTEN CONSENT OF ON-SHORE TECHNOLOGY, INC.

TITLE	PH4 - Pin header, thru hole, Dual row, right/angle			DWG NO. PH4-XXX/XXX-XXX.DWG	
PART NO.	PH4-XXX/XXX-XXX		9242		
APPROVED	CHECKED	DESIGNED	DRAWN	Tolerance	
	Marvin 2002.03.12	Marvin 2002.03.12	Marvin 2002.03.12	X° ±1° X.X ±0.25 X.XX ±0.15 X.XXX ±0.05	
				UNIT: mm SCALE: NONE	REV.: A
				SHEET: 01/01	