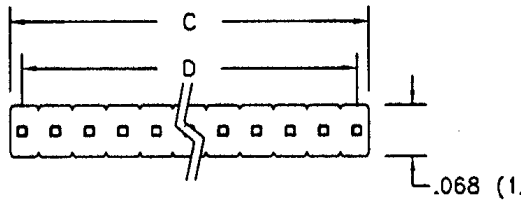
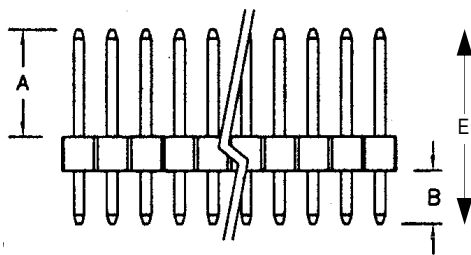
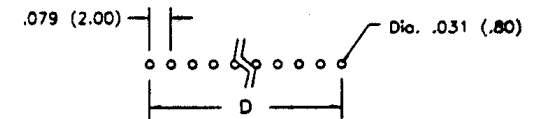


SPECIFICATIONS

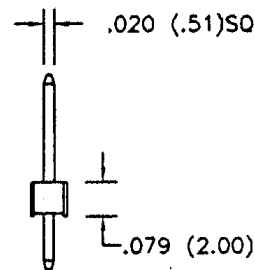
Current rating: 3 amps
 Operating voltage: 250VAC
 Contact material: Phosphor bronze
 Contact plating: Tin, gold or duplex
 Contact resistance: 10 milliohms max.
 Insulator material: PBT, glass reinforced, UL94V-0
 Insulator resistance: 1,000 megohms min.
 Withstanding: 1,000VAC for 1 min.
 Operating temperature: -55°C to +125°C



PC Board Layout



Standard lengths:
 A=4.0mm (.157")
 B=2.8mm (.110")
 E=8.8mm (.346)



Dimensions	
C	0.079" x No. of positions
D	0.079" x No. of spaces

Series	Rows	Type	Contacts	Contact length	Plating
BHD	X	XX	XX	XX	XX
2mm unshrouded pin header	1-2	[blank]=Straight RA=Right angle SM-=Surface mount	Single row: 1-40 Double row: 2-80	SD=Standard (.157") CSL(A/E) for custom length	GDXX=Gold SGXX=Duplex TN=Tin XX=Flash if blank; 15, 30, 50μ"

RoHS compliant

Rev.	Description	Date	Approved	Drawing	Name	Date
				Approved	Howard	08/10/99
				Checked	Lizzy	08/10/99
				Drawn	Tina	08/10/99
				0.0 ± 0.35	0.00 ± 0.20	Angles ± 3'
				UNIT: mm		

Central Components Manufacturing
 440 Lincoln Blvd., Middlesex, New Jersey 08846
 Phone 732 469-5720 888 288-5152 Fax 732 469-1919

Part No.: **BPH-1-XX-SD-XX**

Description: Pin header, 2mm pitch, unshrouded