

# 1.0A RECTIFIER DIODES

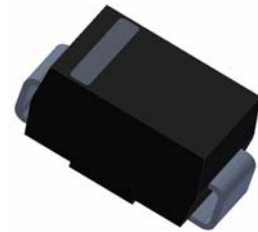
## Surface Mount Plastic Package

### Standard Rectifier

#### Absolute Maximum Ratings T<sub>A</sub> = 25°C unless otherwise noted

Symbol	Parameter	Value	Units
I <sub>FSM</sub>	Peak Forward Surge Current 8.3mS Half Sine Wave	30	A
I <sub>F(AV)</sub>	Maximum Average Forward Rectified Current @ T <sub>L</sub> = 75°C	1	A
T <sub>STG</sub>	Storage Temperature Range	-55 to +150	°C
T <sub>J</sub>	Operating Junction Temperature	-55 to +150	°C

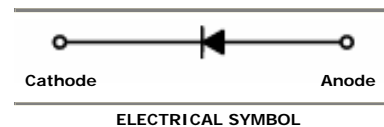
These ratings are limiting values above which the serviceability of the diode may be impaired.



SMA (DO-214AC)

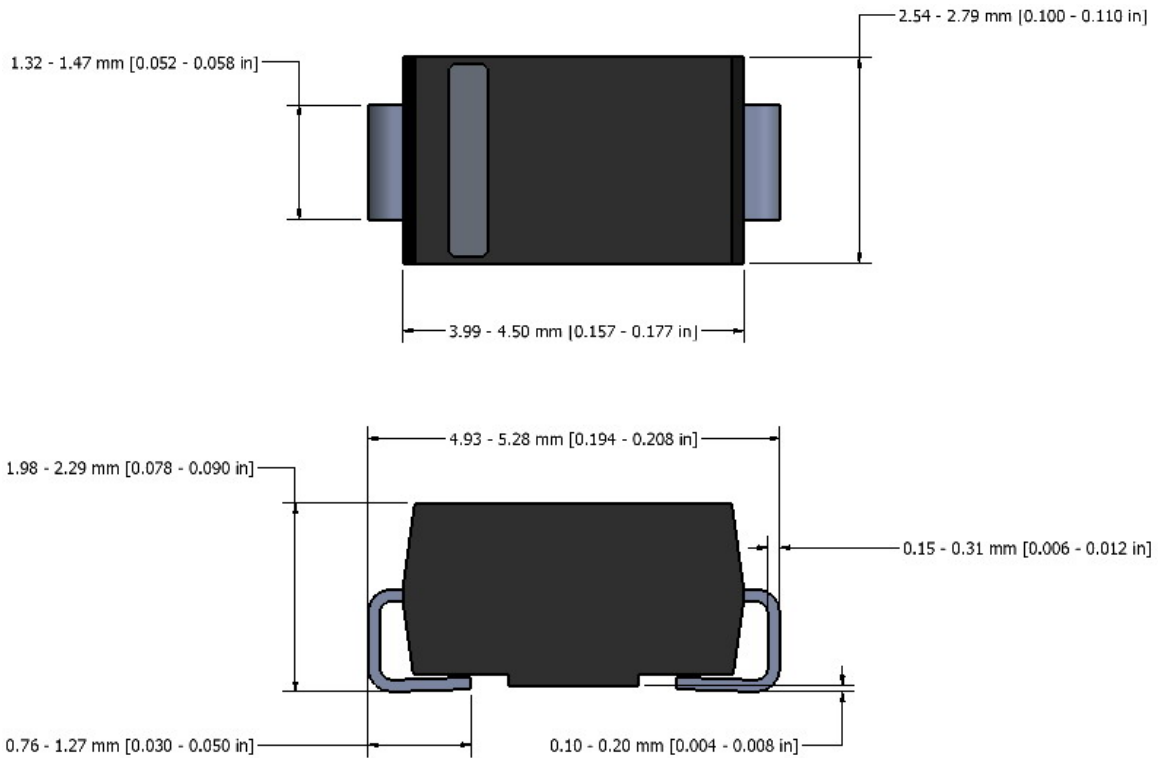
#### Specification Features:

- Wide Voltage Range Selection, 50V to 1000V
- High Surge Current Capability
- Glass Passivated Junction
- Surface Device Type Mounting Which Replaces Axial-lead 1N4001 Series
- Ideal For High Density, Low Profile Mounting
- Moisture Sensitivity Level 1, Unlimited
- Pb Free Version and RoHS Compliant
- Band Indicates Cathode



#### Electrical Characteristics T<sub>A</sub> = 25°C unless otherwise noted


Parameter	Symbol	S1A	S1B	S1D	S1G	S1J	S1K	S1M	Units
Maximum Recurrent Peak Reverse Voltage	V <sub>RRM</sub>	50	100	200	400	600	800	1000	V
Maximum RMS Voltage	V <sub>RMS</sub>	35	70	140	280	420	560	700	V
Maximum DC Blocking Voltage	V <sub>DC</sub>	50	100	200	400	600	800	1000	V
Maximum Instantaneous Forward Voltage @ 1A	V <sub>F</sub>	1.1							V
Maximum DC Reverse Current @ V <sub>DC</sub>	I <sub>R</sub>								μA
T <sub>A</sub> = 25°C									
T <sub>A</sub> = 125°C	50								
Maximum Reverse Recovery Time I <sub>F</sub> = 0.5A, I <sub>R</sub> = 1A, I <sub>RR</sub> = 0.25A	T <sub>rr</sub>	1.8							μS
Typical Junction Capacitance V <sub>R</sub> = 4V, 1MHz	C	12							pF

**SMA (DO-214AC) Package Outline**


This datasheet presents technical data of Tak Cheong's Rectifier Diodes. Complete specifications for the individual devices are provided in the form of datasheets. A comprehensive Selector Guide is included to simplify the task of choosing the best set of components required for a specific application. For additional information, please visit our website <http://www.takcheong.com>.

Although information in this datasheet has been carefully checked, no responsibility for the inaccuracies can be assumed by Tak Cheong. Please consult your nearest Tak Cheong's sales office for further assistance.

Tak Cheong reserves the right to make changes without further notice to any products herein to further improve reliability, function or design, cost and productivity.

**TAK CHEONG<sup>®</sup>** and  are registered trademarks of Tak Cheong Electronics (Holdings) Co., Ltd.