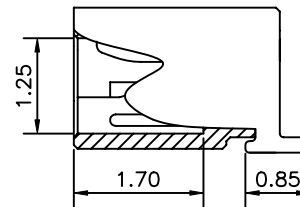
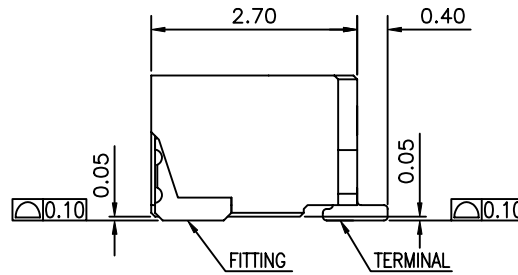
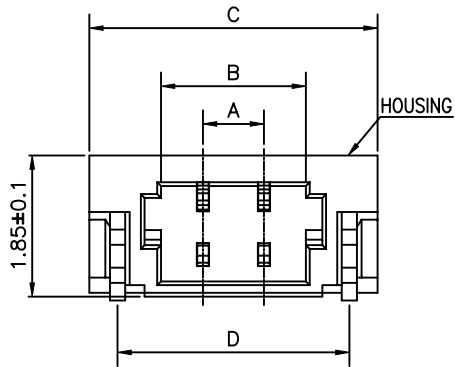


- NOTES:
- MATERIAL:
HOUSING: HIGH TEMPERATURE THERMOPLASTIC UL94V-0.
CONTACT: COPPER ALLOY.
FITTING NAIL: COPPER ALLOY.
 - FINISH:
UNDER PLATING: 50u" MIN. NICKEL OVERALL
CONTACT AREA AND SOLDER TAIL: MATTE TIN 100u" MIN. OVERALL
FITTING NAIL:
UNDER PLATING: 50u" MIN. NICKEL OVERALL
MATTE TIN 100u" MIN. OVERALL
 - REFLOW SOLDER CAPABLE TO 260°C PEAK TEMP. FOR 10 SECONDS MAX.
 - SPEC. PLS. REFER TO GS-12-575.
 - PACKAGE PLS. REFER TO GS-14-1317.

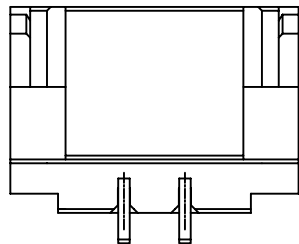
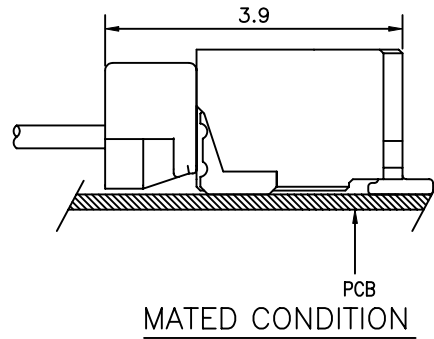
6. PART NUMBER DESCRIPTION:
10107520-XXX X X X LF

NO OF CONTACTS(CKT)	X	X	X	LF
PACKING				
				LEAD FREE
				COLOR
				0: NATURAL
				1: BLACK
				PLATING
				1: MATTE TIN OVERALL

CKT	Dim.A	Dim.B	Dim.C	Dim.D
004	2.40	3.50	5.38	4.64
008	5.60	6.70	8.58	7.84



SECTION A-A



mat'l. code				tolerances unless otherwise specified		CUSTOMER COPY		FCJ www.fciconnect.com		
ltr	ecn no	dr	date	linear	.X ± 0.25	projection	title			
A	T09-1150	WL	11/17/09		.XX ± 0.15		0.8mm WIRE TO BOARD			
				angles	.XXX ± 0.10		SMT R/A TYPE			
				dr	0° ± 2°		product family	WTB	code	
				enr			size	dwg no	TWN	
				chr			scale	10107520		sheet
				appd			A4	1 of 1		
sheet index	revision sheet	A	1							

Tous droits strictement reserves. Reproduction ou communication a des tiers interdite sous quelque forme que ce soit sans autorisation ecrite du proprietaire. Propriete de c FCI. Droits de reproduction FCI.



All rights strictly reserved. Reproduction or issue to third parties in any form whatever is not permitted without written authority from the proprietor. Property of FCI. Copyright FCI.