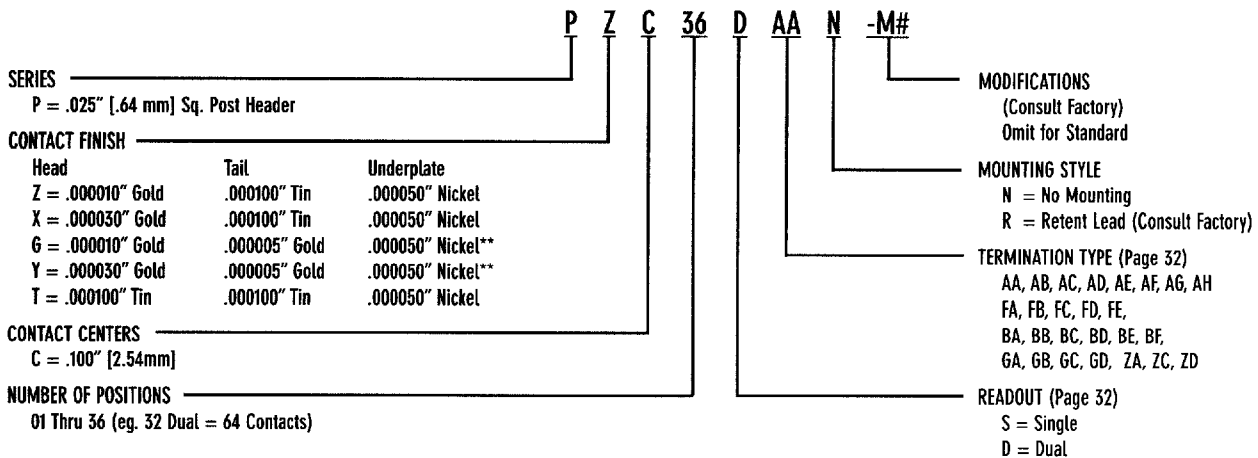


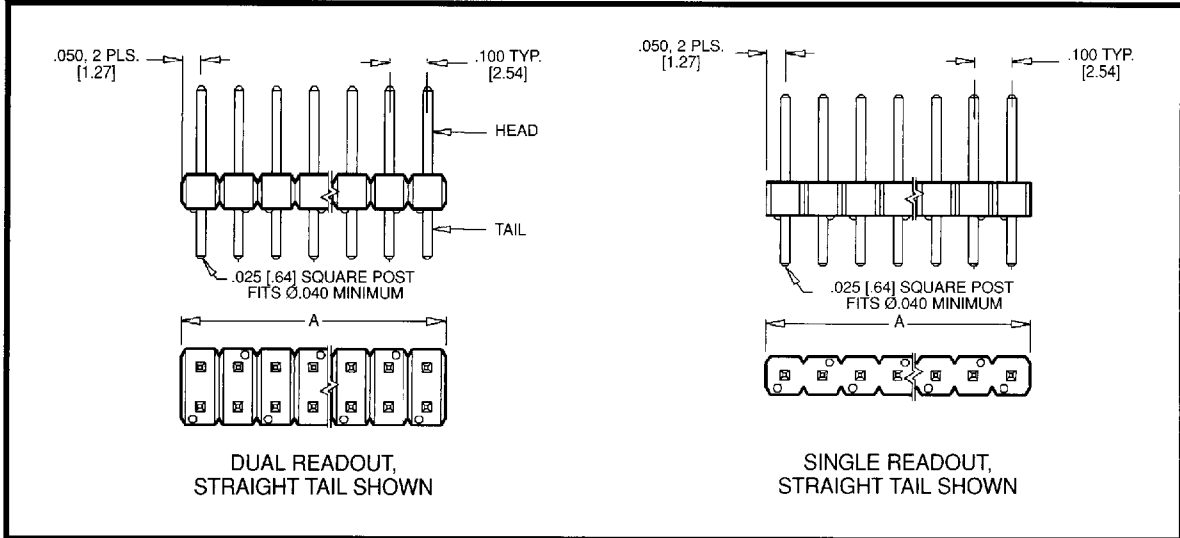
# .025 [.64mm] SQUARE POST HEADERS PZC SERIES .100 X .100 [2.54mm X 2.54mm] GRID

## PART NUMBER CODING



## DIMENSIONS

Dimensions in [ ] are in millimeters, all others in inches.



| PART NUMBER* | NUMBER OF CONTACTS SINGLE/DUAL | OVERALL LENGTH A |
|--------------|--------------------------------|------------------|
| PZC01__N     | 1/2                            | .100 [2.54]      |
| PZC02__N     | 2/4                            | .200 [5.08]      |
| PZC03__N     | 3/6                            | .300 [7.62]      |
| PZC04__N     | 4/8                            | .400 [10.16]     |
| PZC05__N     | 5/10                           | .500 [12.70]     |
| PZC06__N     | 6/12                           | .600 [15.24]     |
| PZC07__N     | 7/14                           | .700 [17.78]     |
| PZC08__N     | 8/16                           | .800 [20.32]     |
| PZC09__N     | 9/18                           | .900 [22.86]     |
| PZC10__N     | 10/20                          | 1.000 [25.40]    |
| PZC11__N     | 11/22                          | 1.100 [27.94]    |
| PZC12__N     | 12/24                          | 1.20* [30.48]    |
| PZC13__N     | 13/26                          | 1.300 [33.02]    |
| PZC14__N     | 14/28                          | 1.400 [35.56]    |
| PZC15__N     | 15/30                          | 1.500 [38.10]    |
| PZC16__N     | 16/32                          | 1.600 [40.64]    |
| PZC17__N     | 17/34                          | 1.700 [43.18]    |
| PZC18__N     | 18/36                          | 1.800 [45.72]    |

| PART NUMBER* | NUMBER OF CONTACTS SINGLE/DUAL | OVERALL LENGTH A |
|--------------|--------------------------------|------------------|
| PZC19__N     | 1/2                            | 1.900 [48.26]    |
| PZC20__N     | 2/4                            | 2.000 [50.80]    |
| PZC21__N     | 3/6                            | 2.100 [53.34]    |
| PZC22__N     | 4/8                            | 2.200 [55.88]    |
| PZC23__N     | 5/10                           | 2.300 [58.42]    |
| PZC24__N     | 6/12                           | 2.400 [60.96]    |
| PZC25__N     | 7/14                           | 2.500 [63.50]    |
| PZC26__N     | 8/16                           | 2.600 [66.04]    |
| PZC27__N     | 9/18                           | 2.700 [68.58]    |
| PZC28__N     | 10/20                          | 2.800 [71.12]    |
| PZC29__N     | 11/22                          | 2.900 [73.66]    |
| PZC30__N     | 12/24                          | 3.000 [76.20]    |
| PZC31__N     | 13/26                          | 3.100 [78.74]    |
| PZC32__N     | 14/28                          | 3.200 [81.28]    |
| PZC33__N     | 15/30                          | 3.300 [83.82]    |
| PZC34__N     | 16/32                          | 3.400 [86.36]    |
| PZC35__N     | 17/34                          | 3.500 [88.90]    |
| PZC36__N     | 18/36                          | 3.600 [91.44]    |

\* For complete part number add readout and termination type from Part Number Coding (e.g. PZC36DAAN).

\*\* Consult Factory

# GENERAL SPECIFICATIONS

## MATERIALS

**Insulator:** Thermoplastic Polyester, Valox\*, UL Recognized Component;  
Polyphenylene Sulfide, Ryton, UL Recognized Component;  
Polyetheretherketone, PEEK, UL Recognized Component;  
Poly(Cyclohexylene Dimethylene Terephthalate), PCT. Thermx, UL Recognized Component;  
Other materials available.

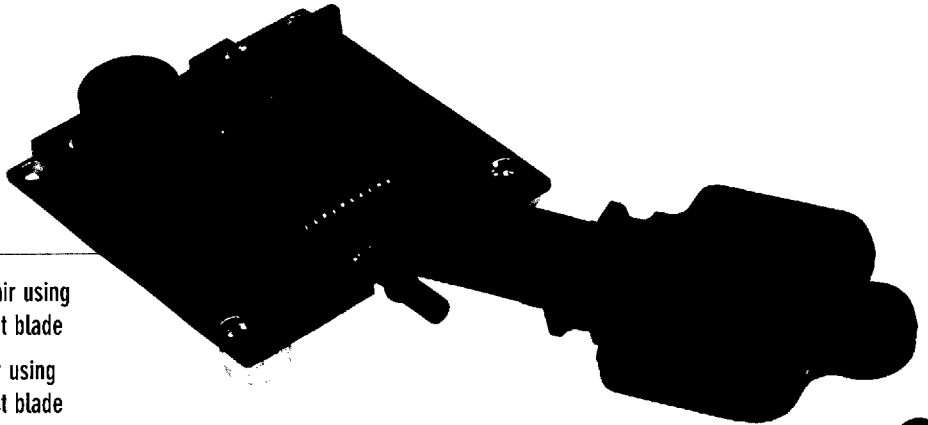
**Contacts:** Phosphor Bronze (Standard); Beryllium Copper; Beryllium Nickel.

**Plating:** Gold and/or Tin over .000050" Nickel Underplate.

**UL File Number:** E64287

**CSA File Number:** 69695

**Federal ID Number:** 54453



## MECHANICAL

**Board Insertion Force:** 16 oz. Maximum per contact pair using  
.062" [1.58 mm] thick steel test blade

**Board Withdrawal Force:** 1 oz. Minimum per contact pair using  
.062" [1.58 mm] thick steel test blade

## ELECTRICAL

**Insulation Resistance:** 5,000 Mega Ohm

**Dielectric Withstanding Voltage:**

|                         |                 |                 |                 |                 |                 |
|-------------------------|-----------------|-----------------|-----------------|-----------------|-----------------|
| <b>Contact Centers:</b> | .050" [1.27 mm] | .100" [2.54 mm] | .125" [3.18 mm] | .150" [3.81 mm] | .156" [3.96 mm] |
| <b>Voltage:</b>         | 250 VDC         | 600 VDC         | 800 VDC         | 1500 VDC        | 1800 VDC        |

**Current Rating:** 1 to 3 Amp

**Voltage Drop:** 30 milli volt at rated current

**Contact Resistance:** 30 milli ohm maximum at rated current

## ENVIRONMENTAL

**Solvent Resistance:** Perchloroethylene, Freon 113, Freon 11, Trichloroethylene

**Operating Temperature:**

|                        |                                   |
|------------------------|-----------------------------------|
| Valox* -65° to +135° C | Phosphor Bronze -65° to +125° C   |
| Thermx -65° to +150° C | Beryllium Copper -65° to +150° C  |
| Ryton -65° to +220° C  | (Consult Factory) -65° to +200° C |
| Peek -65° to +250° C   | Beryllium Nickel -65° to +300° C  |

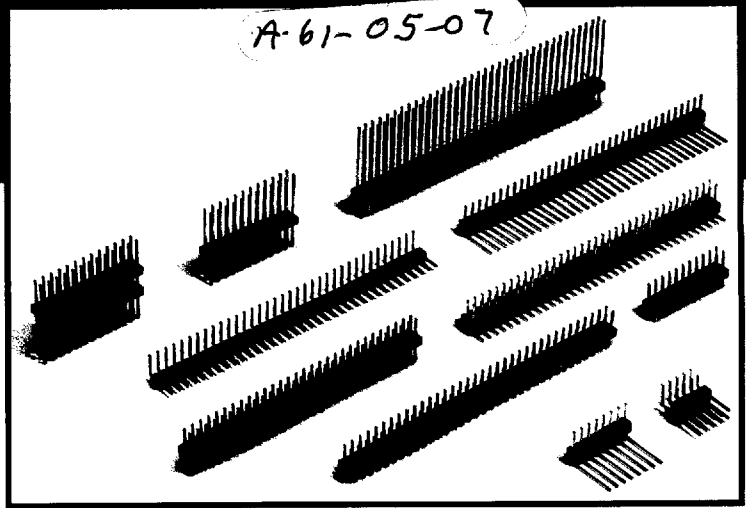
(Continuous temperatures, higher for short duration.)

\*Or equivalent

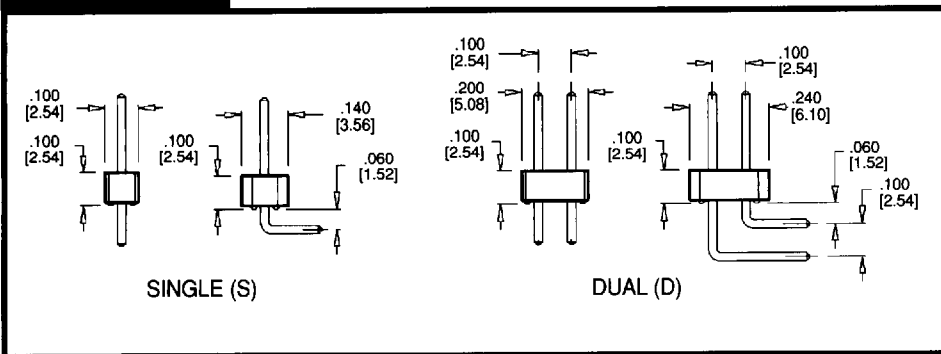
# 100 [2.54mm] CONTACT CENTERS

## FEATURES

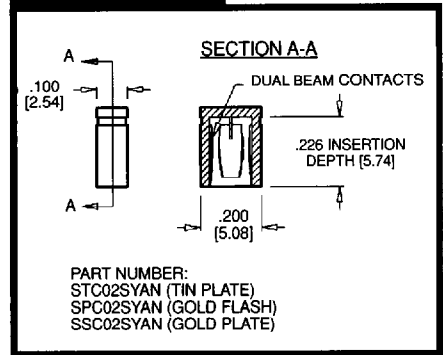
- 3 Amp Current Rating
- UL Flammability Rating: 94V-0
- Insulator: Black Thermoplastic Polyester
- Contact Material: CA 510, Phosphor Bronze



## READOUT

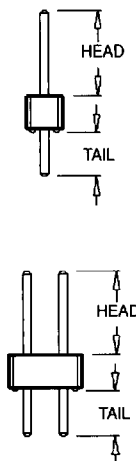


## JUMPER



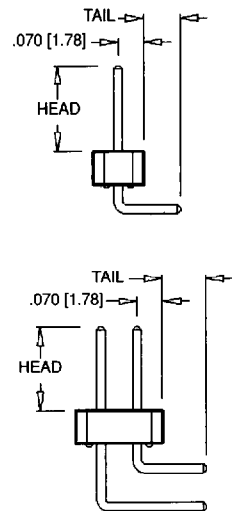
## TERMINATION TYPE

| P/N CODE | HEAD DIMENSIONS |        | TAIL DIMENSIONS |         |
|----------|-----------------|--------|-----------------|---------|
| AA       | .230            | [5.84] | .120            | [3.05]  |
| AB       | .230            | [5.84] | .230            | [5.84]  |
| AC       | .230            | [5.84] | .320            | [8.13]  |
| AD       | .230            | [5.84] | .420            | [10.67] |
| AE       | .230            | [5.84] | .520            | [13.21] |
| AF       | .230            | [5.84] | .620            | [15.75] |
| AG       | .230            | [5.84] | .720            | [18.29] |
| AH       | .230            | [5.84] | .820            | [20.83] |
| FA       | .318            | [8.08] | .120            | [3.05]  |
| FB       | .318            | [8.08] | .220            | [5.59]  |
| FC       | .318            | [8.08] | .320            | [8.13]  |
| FD       | .318            | [8.08] | .420            | [10.67] |
| FE       | .318            | [8.08] | .520            | [13.21] |
| ZA       | .120            | [3.05] | .120            | [3.05]  |
| ZC       | .120            | [3.05] | .260            | [6.60]  |
| ZD       | .120            | [3.05] | .610            | [15.49] |



| P/N CODE | HEAD DIMENSIONS |        | TAIL DIMENSIONS |         |
|----------|-----------------|--------|-----------------|---------|
| BA       | .230            | [5.84] | .100            | [2.54]  |
| BB       | .230            | [5.84] | .200            | [5.08]  |
| BC       | .230            | [5.84] | .300            | [7.62]  |
| BD       | .230            | [5.84] | .400            | [10.16] |
| BE       | .230            | [5.84] | .500            | [12.70] |
| BF**     | .230            | [5.84] | .600            | [15.24] |
| BG**     | .230            | [5.84] | .700            | [17.78] |
| GA       | .318            | [8.08] | .100            | [2.54]  |
| GB       | .318            | [8.08] | .200            | [5.08]  |
| GC**     | .318            | [8.08] | .300            | [7.62]  |
| GD**     | .318            | [8.08] | .400            | [10.16] |

\*\*CONSULT FACTORY FOR AVAILABILITY IN DUAL READOUT



D 27F ■ 8729647 0000440 451 ■



ORDERLINE • TELEPHONE 760.744.0125 • FACSIMILE 760.744.6081