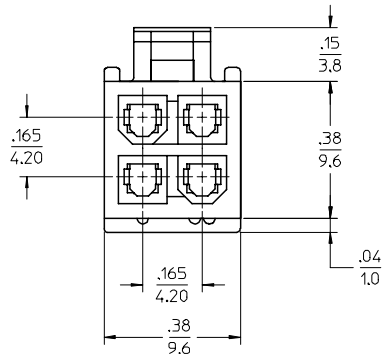
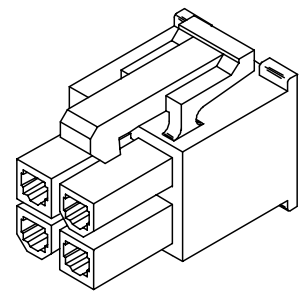
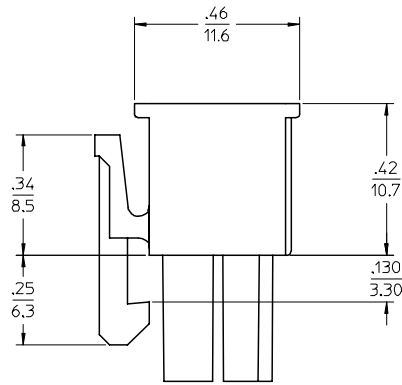
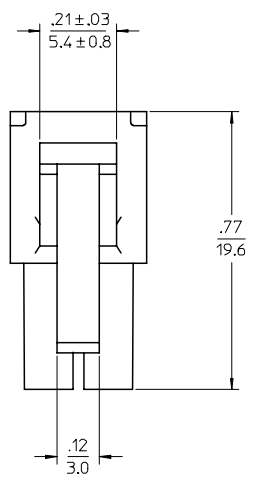
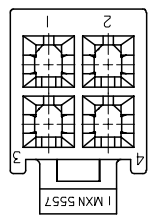
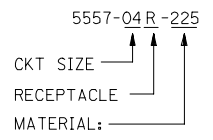


13	12	11	10	9	8	7	6	5	4	3	2	1
PART NUMBER	ENGINEERING NO.	CKT SIZE	MATERIAL SEE NOTE 1									
50-30-4461	5557-04R-225	04	94V-0 BLACK									

NOTES:

- 1) MATERIAL:
 "225" = NYLON 6, 94V-0, PER MOLEX MATERIAL NUMBER 89992-1195 IS GLOW WIRE COMPLIANT WITH A GWIT AND GWFI RATING OF 960 DEGREES C @ 0.75MM.
- 2) PART TO BE USED WITH MOLEX FEMALE TERMINAL #5556.
- 3) PART MATES WITH MOLEX PLUG 5559 AND HEADERS 5566 AND 5569.
- 4) PART IS NOT DESIGNED FOR CURRENT SHARING.
- 5) PRODUCT SPECIFICATION: PS-5556-001
- 6) CONNECTORS ARE NOT TO BE MATED OR UNMATED WHILE CIRCUITS ARE LIVE.
- 7) WIRES ARE TO BE DRESSED IN SUCH A MANNER TO ALLOW THE TERMINALS TO FLOAT FREELY IN THE POCKET.

LEGEND



INITIAL RELEASE FCC NO: UCP2006-1687 DRAWN: ADRA1NOL 2006/01/30 CHKD: GPOLGAR 2006/01/30 APPR: JCOMERC I 2006/01/31 REV: A	QUALITY SYMBOLS = 0 = 0	GENERAL TOLERANCES (UNLESS SPECIFIED)		DIMENSION STYLE IN/MM		SCALE 4:1	DESIGN UNITS METRIC	THIRD ANGLE PROJECTION	
		4 PLACES ± --- ± --- 3 PLACES ± --- ± .010 2 PLACES ± 0.25 ± .015 1 PLACE ± 0.38 ± --- ANGULAR ± 1/2°	DRAWN BY ADRA1NOL DATE 2006/01/24	CHECKED BY GPOLGAR DATE 2006/01/24	TITLE MINI-FIT JR RECEPTACLE 4 CIRCUIT DUAL ROW GLOW WIRE		APPROVED BY JCOMERC I DATE 2006/01/24	MATERIAL NO. RSD-5557-425	DOCUMENT NO. MOLEX INCORPORATED
DRAFT WHERE APPLICABLE MUST REMAIN WITHIN DIMENSIONS		SEE CHART		THIS DRAWING CONTAINS INFORMATION THAT IS PROPRIETARY TO MOLEX INCORPORATED AND SHOULD NOT BE USED WITHOUT WRITTEN PERMISSION					