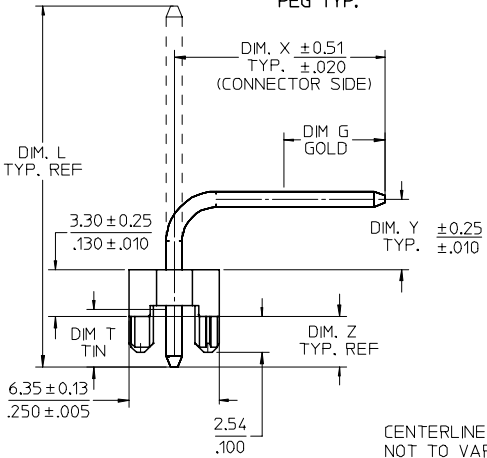
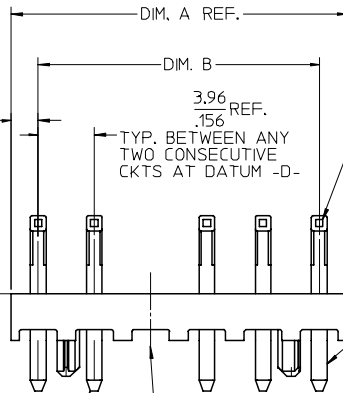


DETAIL "Z"
SCALE 10:1
PEG TYP.

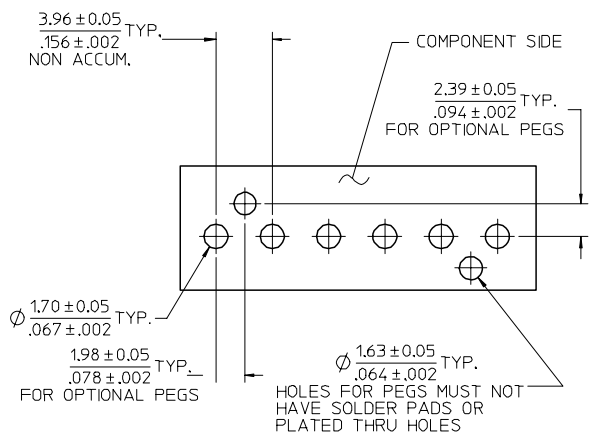


CENTERLINE OF PIN AT TIP NOT TO VARY FROM CENTERLINE OF PIN AT DATUM -D- BY MORE THAN 0.13/.005 IN EITHER DIRECTION

VOIDED CKT. SEE CHART FOR LOCATION

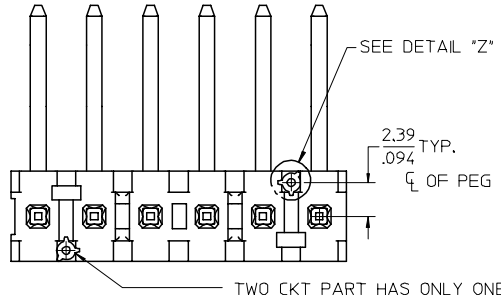


CENTERLINE OF PIN AT TIP NOT TO VARY FROM CENTERLINE OF PIN AT DATUM -D- BY MORE THAN 0.20/.008 IN EITHER DIRECTION



RECOMMENDED PC BOARD HOLE LAYOUT

FOR CORRECT ORIENTATION OF PARTS WITH VOIDS, ELIMINATE CORRESPONDING PCB HOLE.



- NOTES:
- MATERIAL: GLASS FILLED POLYESTER, 94V-0, MOLDED NATURAL (WHITE).
 - FINISH: (102) OVERALL TIN: (0.00508)/.000200 MIN. OVER COPPER UNDERPLATE; (0.00254)/.000100 MIN. (208) SELECT GOLD: (0.00038)/.000015 MIN. *SELECT TIN: (0.00254)/.000100 MIN. OVERALL NICKEL UNDERPLATE: (0.00127)/.000050 MIN. (228) SELECT GOLD: (0.00076)/.000030 MIN. *SELECT TIN: (0.00254)/.000100 MIN. OVERALL NICKEL UNDERPLATE: (0.00127)/.000050 MIN. (501) OVERALL GOLD: (0.00051)/.000020 MIN. OVER NICKEL UNDERPLATE: (0.00076)/.000030 MIN.
 - THE PRIMARY SHIPPING CARTON WILL BE LABELED "COMPLIANT TO RoHS DIRECTIVE 2002/95/EC AND ELV ANNEX II OF DIRECTIVE 2000/53/EC". CARTONS WITHOUT THIS LABEL MAY CONTAIN PRODUCT WITH TIN/LEAD PLATINGS.
 - PRODUCT SPECIFICATION: PS-08-50
 - PACKAGING SPECIFICATION: SEE CHARTS
 - PARTS ARE STACKABLE END TO END ON (3.96)/.156 CENTERS.
 - FOR PARTS WITHOUT PEGS, SEE DRAWING SDA-41772.
 - EXPANSION SLOTS TO BE THRU-SLOTS, AS SHOWN, FOR 4 THRU 18 CKT. PARTS.
 - SOLDERABILITY: WHEN PARTS ARE SOLDERED AT A TEMPERATURE OF (230 C) OR 446 F FOR 5 SECONDS, EACH SOLDERED SURFACE SHALL BE A MINIMUM OF 95% COVERED WITH A SMOOTH CONTINUOUS ADHERENT COATING. FOR OTHER INFORMATION SEE SMES-152.
 - PIN PUSH OUT FORCE: PRIOR TO SOLDERING, A 3 POUND MINIMUM FORCE (IN EITHER DIRECTION) SHALL BE REQUIRED TO PUSH THE PIN OUT OF THE HEADER.
 - 6 CIRCUIT PART SHOWN.
 - THIS PART CONFORMS TO CLASS B REQUIREMENTS OF COSMETIC SPECIFICATION PS-45499-002.

NO. OF CKTS.	DIM. A	DIM. B	NO. OF PEGS
2	7.77 .306	3.96±0.05 .156±.002	1
3	11.73 .462	7.92±0.08 .312±.003	2
4	15.70 .618	11.89±0.08 .468±.003	2
5	19.66 .774	15.85±0.10 .624±.004	2
6	23.62 .930	19.81±0.10 .780±.004	2
7	27.58 1.086	23.77±0.10 .936±.004	2
8	31.55 1.242	27.74±0.13 1.092±.005	2
9	35.51 1.398	31.70±0.13 1.248±.005	2
10	39.47 1.554	35.66±0.13 1.404±.005	2
11	43.43 1.710	39.62±0.15 1.560±.006	2
12	47.40 1.866	43.59±0.15 1.716±.006	2
13	51.36 2.022	47.55±0.15 1.872±.006	2
14	55.32 2.178	51.51±0.18 2.028±.007	2
15	59.28 2.334	55.47±0.18 2.184±.007	2
16	63.25 2.490	59.44±0.18 2.340±.007	2
17	67.21 2.646	63.40±0.20 2.496±.008	2
18	71.17 2.802	67.36±0.20 2.652±.008	2

UPDATE NOTES	FC NO: UCP2007-2132	2007/03/21
DRAWN/RI/DER	2007/03/21	
CHKD:ADERR	2007/03/27	
APPR:FSM/TH	2007/03/28	
DESCRIPTION		

QUALITY SYMBOLS	
□=0	▽=0

GENERAL TOLERANCES (UNLESS SPECIFIED)	
mm	INCH
4 PLACES ±---	±---
3 PLACES ±---	±---
2 PLACES ±---	±---
1 PLACE ±---	±---
ANGULAR ±1/2°	

DIMENSION STYLE	
MM/IN	
DRAWN BY	DATE
SAMIEC	1988/08/19
CHECKED BY	DATE
PATEL	1988/08/19
APPROVED BY	DATE
LENZ	1988/08/19
MATERIAL NO.	DOCUMENT NO.
SEE CHART	SD-42472-001

SCALE	DESIGN UNITS	THIRD ANGLE PROJECTION
4:1	INCH	⊕
FLAT HEADER ASSY (3.96)/.156 CENTERS, BENT SQ PINS, W/ PEGS		
MOLEX MOLEX INCORPORATED		
SHEET NO.	1 OF *	

