

**SPECIFICATIONS**

**Mechanical**

**Mating Force:** 7.72kg (16.17Lb) max.  
**Umating Force:** 0.45kg (0.94Lb) min.  
**Durability:** 500 Cycles

**Electrical**

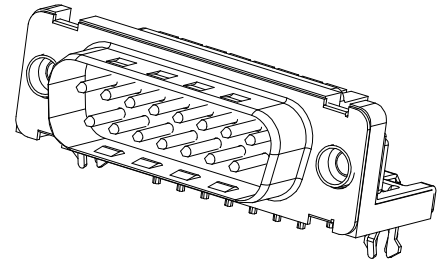
**Current Rating:** 2A  
**Contact Resistance:** 35mW max.  
**Dielectric Withstanding Voltage:** 1000V AC/1min min.  
**Insulation Resistance:** 5000MW min.

**Physical**

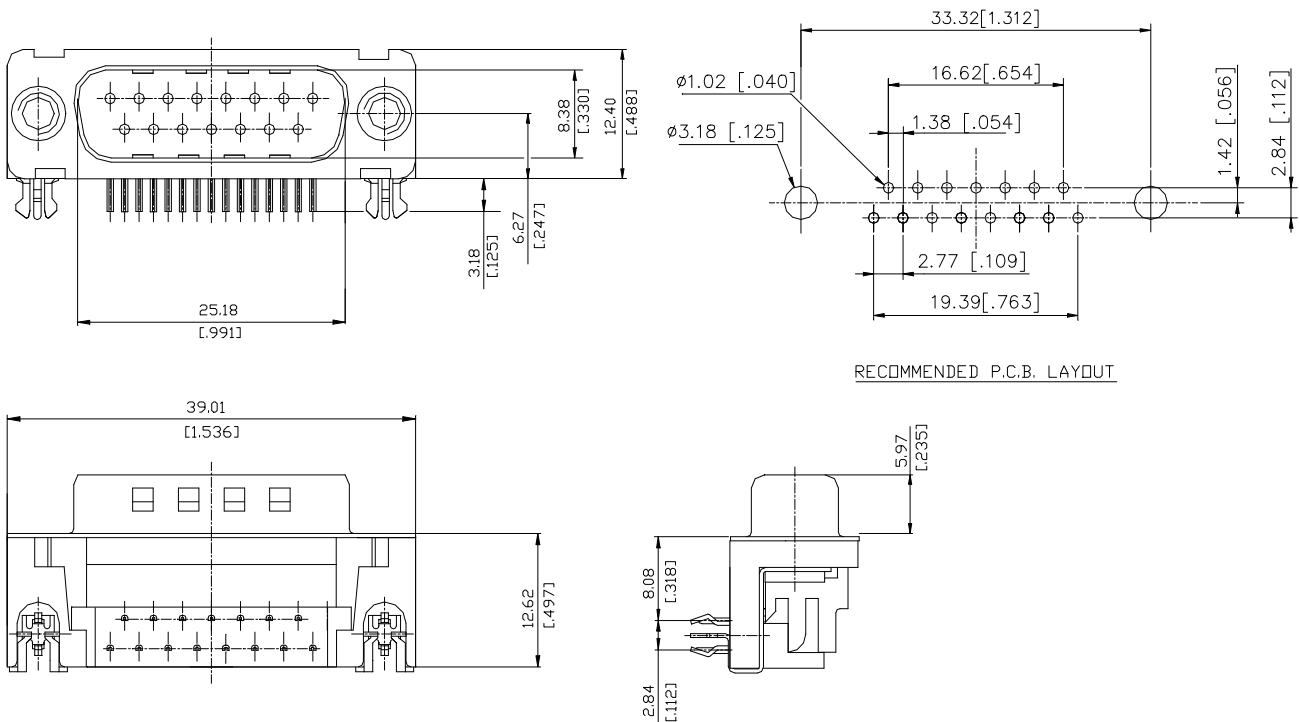
**Housing:** Thermoplastic, UL 94V-0 rated in Black Color  
**Contact:** Copper alloy  
**Plating:** See "ORDERING INFORMATION"  
**Operating Temperature:** -55 to +105

**D-SUB Connector**

**DM Series**  
**Right Angle Type, T/H**  
**2.77mm [.109"] Pitch**  
**15 Pos.**



**DRAWING**



**ORDERING INFORMATION**

PRODUCT NO.: DM 1 0 2 2 \* - D4 - 4F

