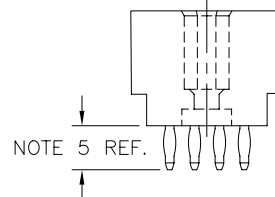
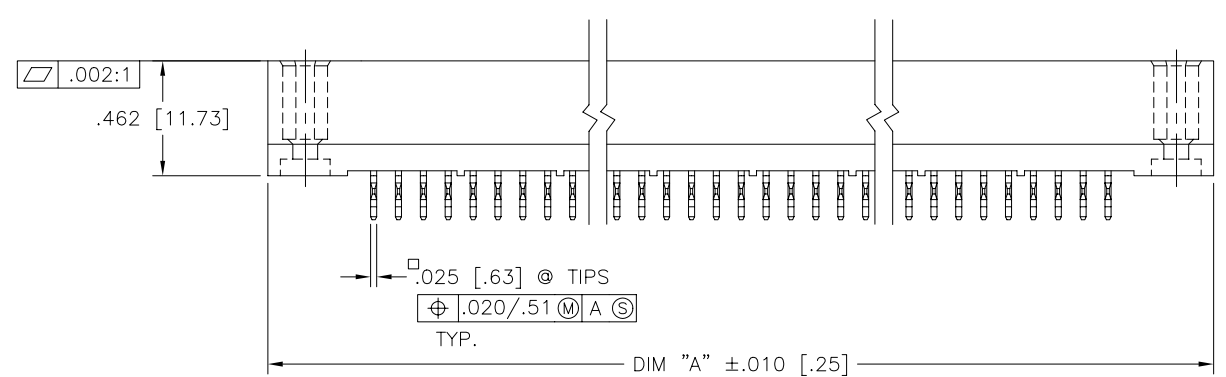
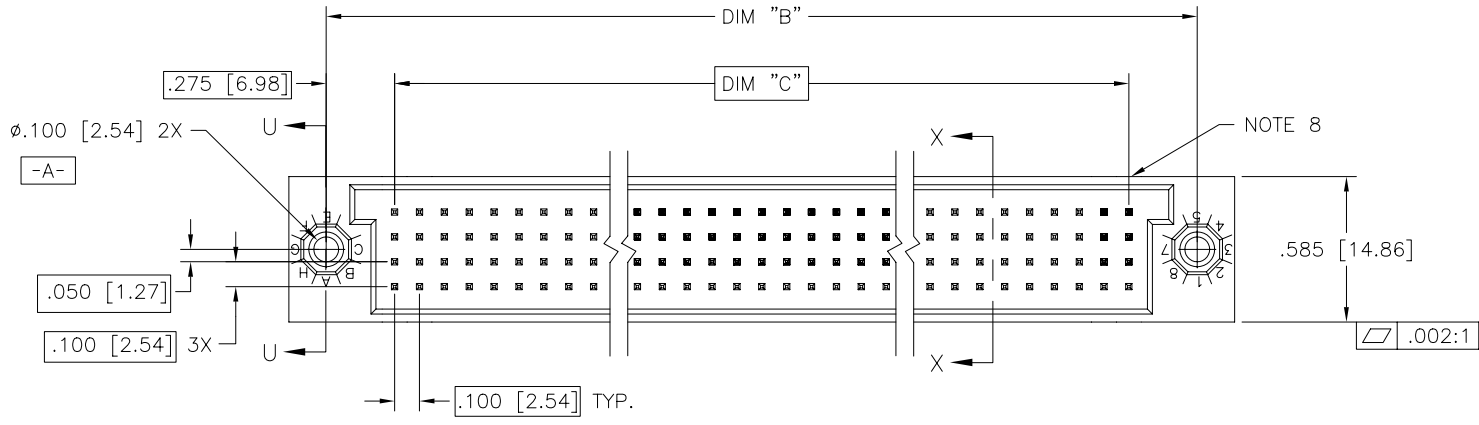


PRODUCT NO.  
SEE NOTE 1

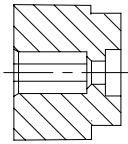


FCI  
FCIconnect.com

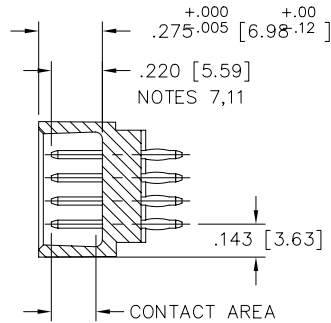
Copyright FCI

mat'l. code		surface		tolerance		projection		product family	
NOTE 3		ISO 1302 ✓		ISO 406		ISO 1101		HPC	
ltr	ecm no	dr	date	tolerances unless otherwise specified		INCH/MM		title	
A	v12397	RDS	9/16/91	angles	linear	.xx ±.01/.3		4 ROW VERTICAL HEADER	
B	v31616	SRS	10/26/93			.xxx ±.005/.13		HIGH DURABILITY, P.F., 0 G.P.	
C	v32163	GIP	12/08/93	σ±2'		.xxxx ±.0020/.051		scale 1:1	
D	v70964	MSC	6/26/97	dr	S. ROYER	8/16/91		dwg no	
E	v90620	HTB	3/03/99	engr	S. CLARK	9/16/91		sheet 1 of 2 size	
F	v00275	LSS	2/02/00	chr	S. CLARK	9/16/91		50203 A3	
G	M06-0261	AEA	7/08/06	appd	S. CLARK	9/16/91		type Product Customer Drawing	
sheet	revision	G	G						
index	sheet	1	2						

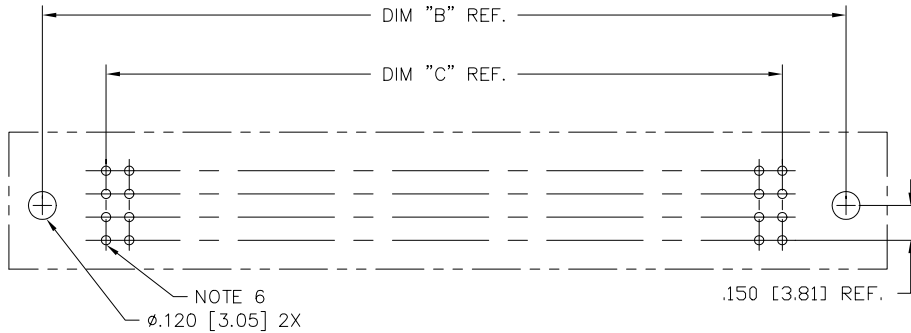
PRODUCT NUMBER	DIM.	LENGTH FORMULAS
SEE NOTE 1	DIM "A"	.100/2.54 x NO. OF COLUMNS +.75/19.1
	DIM "B"	.100/2.54 x NO. OF COLUMNS +.450/11.43
	DIM "C"	.100/2.54 x NO. OF COLUMNS -.100/2.54



SECTION U-U



SECTION X-X



RECOMMENDED PCB LAYOUT  
(ALL HOLES LOCATED ON .100/2.54 GRID  
UNLESS OTHERWISE SPECIFIED)

NOTES:

- ① PRODUCT NUMBERING CODE:  
50203 - 7 YYY Z  
TAIL LENGTH(NOTE 5)  
NO. OF POSITIONS(NOTE 2)  
PLATING(NOTE 4)  
BASE NUMBER
- ② THIS PRODUCT IS CONFIGURED IN SIZES OF 6 thru 80 COLUMNS IN INCREMENTS OF ONE.  
i.e.: 6,7,8,9,.....79,80.
- ③ HOUSING MATERIAL: GLASS AND MINERAL FILLED HIGH TEMP. THERMOPLASTIC FLAME RETARDANT PER UL94V-0 COLOR: BLACK  
PIN MATERIAL: PHOS BRONZE
- ④ PLATING CONTACT AREA:  
7 = 60u"/1.52u GXT OVER 50u"/1.27u Ni MIN.
- ⑤ TAIL LENGTH OPTIONS:(LGTH. REF. ONLY)  
A = .177/4.5      P = .470/11.94 .062 PCB/SHROUD  
C = .533/13.54      L = .188/4.78 .062 PCB  
D = .733/18.62      R = .250/6.35 .062 PCB  
G = .250/6.35
- ⑥ ø.0453/1.151 DRILLED HOLE PLATED WITH .0003/-.007 MIN. SnPb OVER .001/.03 to .003/.08 Cu. PLATING TO ACHIEVE A ø.040±.003/1.02±.08 HOLE.
- ⑦ TO ASSURE PROPER INSTALLATION: USE TOOLING AS SPECIFIED IN INSTRUCTION MANULA 155915-001. PIN MATING LENGTH WILL BE ±.002/-.05 AFTER INSTALLATION.
- ⑧ MANUFACTURE'S NAME, P/N AND LOT CODE TO APPEAR ON THIS SURFACE PER BUS-12-108.
9. FOR DOCUMENTATION MENU, SEE BUS-01-057.
10. TO INSURE RELIABLE HIGH DURABILITY PERFORMANCE THE HPC HEADERS MUST RETAIN THE FACTORY LUBRICATION PROVIDED.
- ⑪ REFERENCE 50807 FOR F.M.L.B. AVAILABLE OPTIONS AND WORKSHEET.

mat'l. code		surface		tolerance		projection		product family	
-		ISO 1302 ✓		ISO 406 ISO 1101		⊕		HPC	
ltr		ecn no dr		date		tolerances unless otherwise specified		title	
G						.xx ±.01/.3 .xxx ±.005/.13 σ±2' .xxxx ±.0020/.051		4 ROW VERTICAL HEADER HIGH DURABILITY, P.F., 0 G.P.	
						INCH/MM		dwg no	
						scale 1:1		sheet 2 of 2 size	
				dr S. ROYER 8/16/91				50203 A3	
				enr S. CLARK 9/16/91				type Product Customer Drawing	
				chr S. CLARK 9/16/91					
				appd S. CLARK 9/16/91					
sheet index		revision sheet							