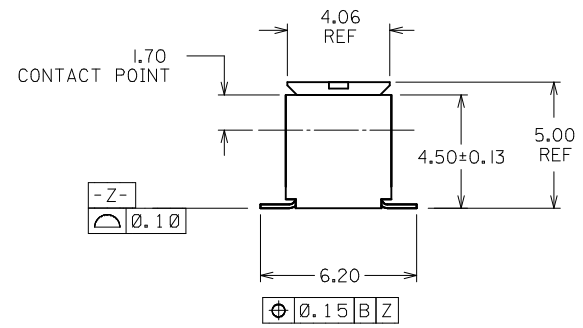
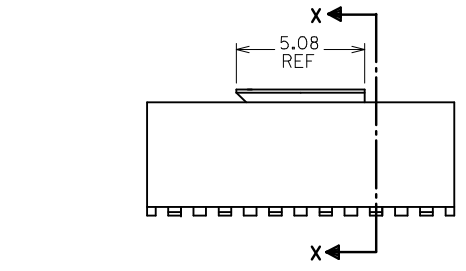
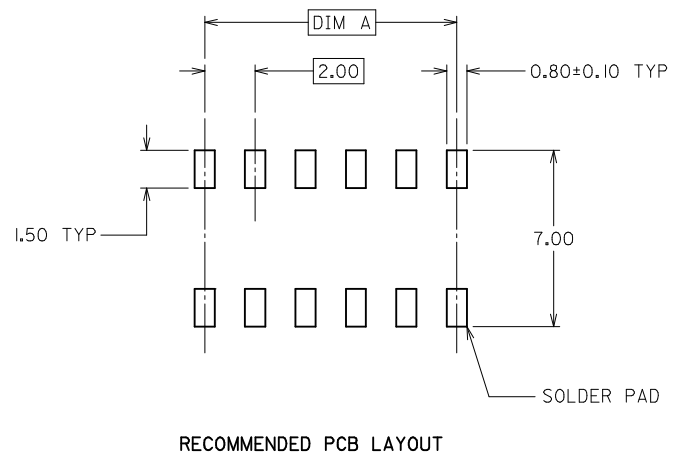


PART NUMBER (IN TUBE)	CKT. SIZE	DIM A	DIM B
87381-0678	6	4.00	6.00
87381-0878	8	6.00	8.00
87381-1078	10	8.00	10.00
87381-1278	12	10.00	12.00
87381-1478	14	12.00	14.00
87381-1678	16	14.00	16.00
87381-1878	18	16.00	18.00
87381-2078	20	18.00	20.00
87381-2278	22	20.00	22.00
87381-2478	24	22.00	24.00
87381-2678	26	24.00	26.00
87381-2878	28	26.00	28.00
87381-3078	30	28.00	30.00
87381-3278	32	30.00	32.00
87381-3478	34	32.00	34.00
87381-3678	36	34.00	36.00
87381-3878	38	36.00	38.00
87381-4078	40	38.00	40.00
87381-4278	42	40.00	42.00
87381-4478	44	42.00	44.00
87381-4678	46	44.00	46.00
87381-4878	48	46.00	48.00
87381-5078	50	48.00	50.00



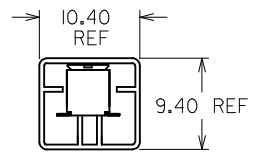
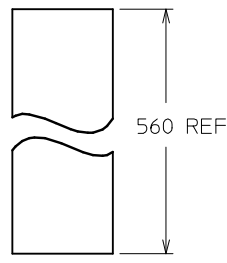
PART NO. LEGEND
87381 - * * * 7 8
CIRCUIT SIZE

- NOTES:
- PLATING FINISH :
0.38um MIN. GOLD IN CONTACT AREA, 1.27um MIN. TIN IN SOLDER TAIL AREA BOTH OVER NICKEL OVERALL
 - 30 CKT ILLUSTRATED FOR TAPE & REEL VERSION ON SHT 2.
 - PRODUCT SPECIFICATION PS-87380 APPLIES
 - COPLANARITY OF SOLDER TAILS ARE TO BE MEASURED BY RESTING THE PART ON A FLAT GAUGE SURFACE
 - TUBE PACKAGING STANDARD
 - COVER IS PLACE INTO THE CORE HOLE AT THE CENTRE OF PART.
EVEN CKT -CENTRE 2 CKT (CENTRE LINE BETWEEN);
ODD CKT -CENTRE 1 CKT (CENTRE LINE) AND 1 CKT TO RIGHT.
 - PARTS SHALL BE PACKED IN MOISTURE BARRIER BAG.

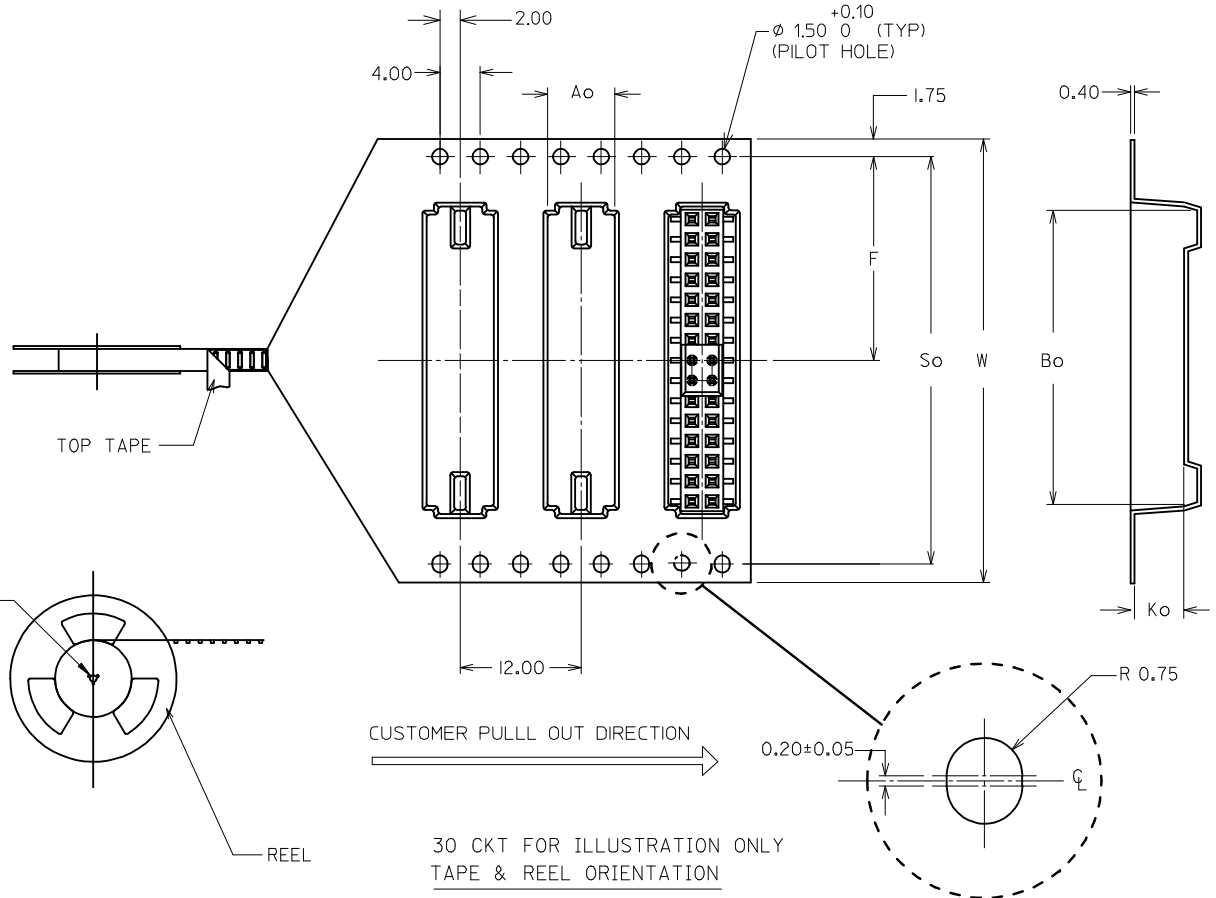


ADD NOTE 7. EC NO: S2015-0813 DRW:ATSEE 2015/01/16 CHKD:CGOH 2015/01/22 APPR:KHLIM 2015/01/22	QUALITY SYMBOLS	GENERAL TOLERANCES (UNLESS SPECIFIED)	DIMENSION STYLE	SCALE	DESIGN UNITS	THIRD ANGLE PROJECTION
	▽=0 ∇=0	mm INCH 4 PLACES ± --- ± --- 3 PLACES ± --- ± --- 2 PLACES ± 0.20 ± --- 1 PLACE ± --- ± --- ANGULAR ± 3 °	MM ONLY	NTS	METRIC	
	REV	DESCRIPTION	DRAWN BY	DATE	TITLE	MGRID 2MM RECEPTACLE 4.50MM HT. MOLEX INCORPORATED
			KSEE	2001/04/25		
		DRAFT WHERE APPLICABLE MUST REMAIN WITHIN DIMENSIONS	CHECKED BY	DATE	DOCUMENT NO.	SHEET NO.
			KCLING	2001/05/23	SD-87381-***68	1 OF 2
			APPROVED BY	DATE	THIS DRAWING CONTAINS INFORMATION THAT IS PROPRIETARY TO MOLEX INCORPORATED AND SHOULD NOT BE USED WITHOUT WRITTEN PERMISSION	
			KHLIM	2015/01/22		
			MATERIAL NO.	SIZE		
				A3		

CKT SIZE	PART NO IN TUBE	PART NO WITH CAP IN TAPE & REEL	W	So	Ao	F	Bo	Ko
50	87381-5078	87381-6851	72	68.40	7.20	34.20	50.50	5.30

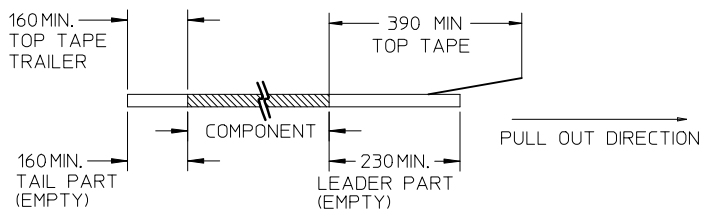


CONNECTOR ORIENTATION
IN TUBE

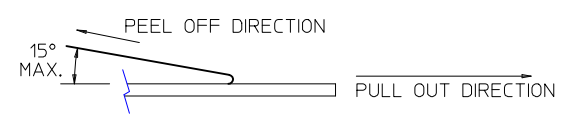


NOTES:

1. LEADER AND TRAILER TAPE



2. PEELING OFF FORCE OF THE TOP TAPE: 20-80gf.
(PEELING DIRECTION AS SHOWN IN FOLLOWING FIGURE)



3. PACKAGING STANDARD IS AS PER EIA-481.

4. TAPE & REEL QUANTITY = 800 PCS/REEL

ADD NOTE 7. EC NO: S2015-0813 DRW:WATSEE CHKD:CGOH APPR:KHLIM 2015/01/16 2015/01/22 2015/01/22	DESCRIPTION REV	QUALITY SYMBOLS ▽=0 ◻=0	GENERAL TOLERANCES (UNLESS SPECIFIED)		DIMENSION STYLE MM ONLY		SCALE NTS	DESIGN UNITS METRIC	THIRD ANGLE PROJECTION												
		<table border="1"> <thead> <tr> <th></th> <th>mm</th> <th>INCH</th> </tr> </thead> <tbody> <tr> <td>4 PLACES</td> <td>± ---</td> <td>± ---</td> </tr> <tr> <td>3 PLACES</td> <td>± ---</td> <td>± ---</td> </tr> <tr> <td>2 PLACES</td> <td>± 0.20</td> <td>± ---</td> </tr> <tr> <td>1 PLACE</td> <td>± ---</td> <td>± ---</td> </tr> </tbody> </table>		mm	INCH	4 PLACES	± ---	± ---	3 PLACES	± ---	± ---	2 PLACES	± 0.20	± ---	1 PLACE	± ---	± ---	DRAWN BY KSEE	DATE 2001/04/25	TITLE MGRID 2MM RECEPTACLE 4.50MM HT.	
			mm	INCH																	
		4 PLACES	± ---	± ---																	
3 PLACES	± ---	± ---																			
2 PLACES	± 0.20	± ---																			
1 PLACE	± ---	± ---																			
ANGULAR ± 3 °	CHECKED BY KCL ING	DATE 2001/05/23	MOLEX INCORPORATED																		
DRAFT WHERE APPLICABLE MUST REMAIN WITHIN DIMENSIONS			MATERIAL NO. SEE TABLE	DATE 2015/01/22	DOCUMENT NO. SD-87381-***68	SHEET NO. 2 OF 2															