

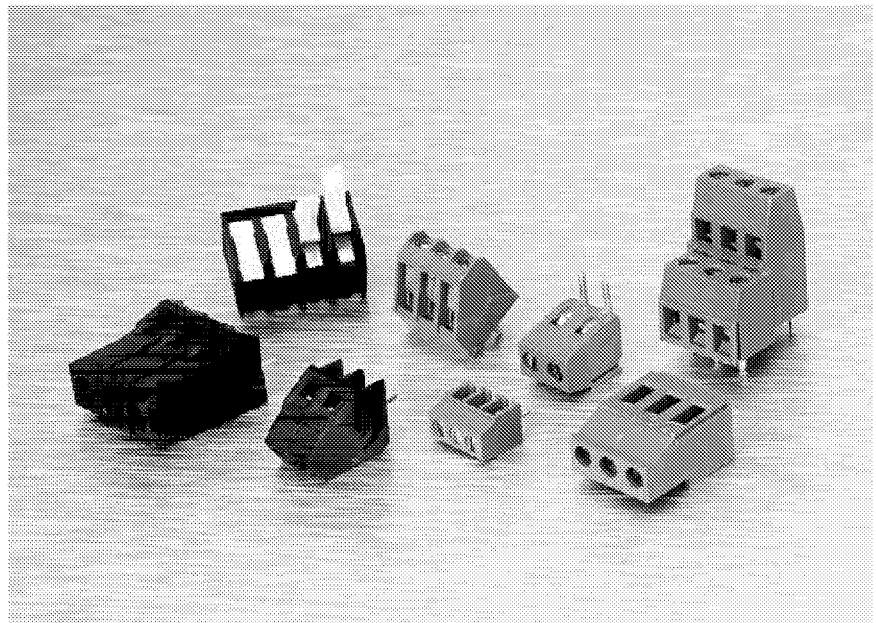
DESCRIPTION/ APPLICATION

Designed to European specifications, these one piece blocks facilitate wire to PC board connections. While all blocks are modular and can be interlocked together to extend the number of terminals to any length, molded-to-length versions are also available.

DESIGN ADVANTAGES

- Pitches Available
 - 2,5mm (0.098")
 - 3,5mm (0.138")
 - 5,0mm (0.197")
 - 5,08mm (0.200")
 - 0.250" (6,35mm)
 - 7,0mm (0.276")
 - 10mm (0.394")
 - 10,16mm (0.400")
- Effective 2,5mm for Double Decker Design.
- Vertical and horizontal solder pins available for most lines.
- Available in four connection styles:
 - Cage clamp for superior connection.
 - Wire protection for economical designs.
 - Tunnel connection for most economical designs.
 - Screwless clamp for quick connections.
- Special "interlocking" feature allows any length connector to be assembled in modular fashion — Also available molded to length.
- Thermoplastic insulator housing — UL94V-0 rated.
- Gold and silver plated terminals available in addition to standard tin plating.
- Hot stamped terminal marking available.
- Test points for direct reading built into many connectors.

ONE PIECE CONNECTORS



CONNECTOR INDEX

2,5mm Surface Mount with Screwless Clamp	8
3,5mm Standard with Wire Protector	9
3,5mm Standard with Tunnel Connection	10
5mm Standard with Cage Clamp	11, 14
5mm Standard with Wire Protector	12, 15
5mm Standard with Tunnel Connection	13
5mm High Profile with Cage Clamp	16
5mm High Profile with Wire Protector	17
5mm High Profile with Tunnel Connection	18
5mm Angular with Cage Clamp	19, 20
5mm Double Decker with Cage Clamp	21, 22
5,08mm Standard with Cage Clamp	23
5,08mm Standard with Wire Protector	24
5,08mm Angular with Cage Clamp.....	25
5,08mm Angular with Wire Protector	26
5,08mm Double Decker with Cage Clamp.....	27
5,08mm Standard with Screwless Clamp	28
0.250" Standard with Cage Clamp.....	29

**5MM DOUBLE DECKER CONNECTORS
WITH CAGE CLAMP
SERIES B07**

PHYSICAL PROPERTIES

Housing:

HOUSING MATERIAL: Polybutylene terephthalate (PBTP), GV 20

FLAMMABILITY: UL94V-0

COLOR: Blue or Black

Terminal:

CAGE CLAMP AND SOLDER PIN: Brass, tin plated

SCREW: M3 x 4,3mm, steel, zinc plated, yellow chromate treated

Mechanical:

PITCH (TERMINAL SPACING): 5mm and 10mm

RECOMMENDED PCB HOLE DIA.: -1,4mm

WIRE STRIP LENGTH: 6,5mm - 7,0mm

RECOMMENDED TIGHTENING TORQUE: 0.8Nm (7.0 in-lbs)

ELECTRICAL PROPERTIES

MAXIMUM CURRENT: 16A

OPERATING VOLTAGE: 300V

WIRE RANGE: 12-22 AWG

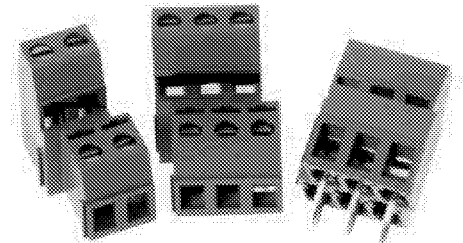
DIELECTRIC WITHSTAND: 16 KV/mm

ENVIRONMENTAL PROPERTIES

OPERATING TEMPERATURE RANGE:

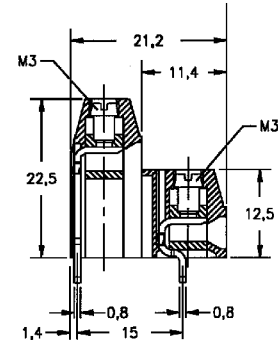
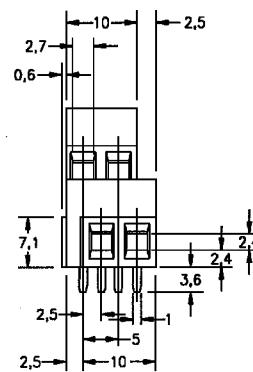
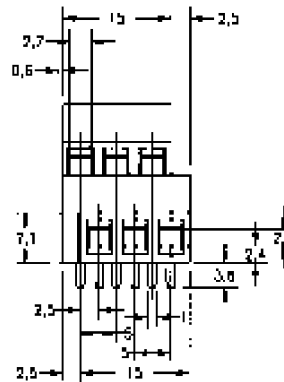
-30°C to +120°C Gold and Silver contact system

-30°C to +105°C Tin contact system



5mm and 10mm Pitch

B07C4V (vertical solder pins)



Ordering Information

# OF TERMINALS	5MM VERTICAL	# OF TERMINALS	10MM VERTICAL
4	B07C4V02T	2	B07C5V02T
6	B07C4V03T	4	B07C5V03T
8	B07C4V04T		
10	B07C4V05T		
12	B07C4V06T		
14	B07C4V07T		
16	B07C4V08T		
18	B07C4V09T		
20	B07C4V10T		
22	B07C4V11T		
24	B07C4V12T		

NOTE: Add "B" suffix for black color. Minimum order 5000 pieces.



BUCHANAN

5MM DOUBLE DECKER CONNECTORS WITH CAGE CLAMP SERIES 5LEEV

PHYSICAL PROPERTIES

Housing:

HOUSING MATERIAL: Thermoplastic, UL recognized

FLAMMABILITY: UL94V-0

COLOR: Green or Black

Terminal:

CONTACTS: Bright acid-tin plated copper alloy

SOLDERABILITY: MIL STD 202, Method 208

CAGE CLAMP & SOLDER PIN: Zinc plated steel with yellow chromate coating

SCREWS: Zinc plated steel with yellow chromate coating, M2.5

Mechanical:

PITCH (TERMINAL SPACING): 5mm

RECOMMENDED PCB HOLE DIA.: 0.062" Dia.

RECOMMENDED TIGHTENING TORQUE: 4.5 in. lb.

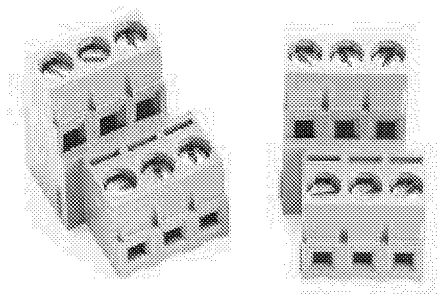
ELECTRICAL PROPERTIES

RATING: 10 Amps, 300 volts/15 amps, 150 volts (limited ratings)

WIRE RANGE: 14-28 AWG (solid or stranded)

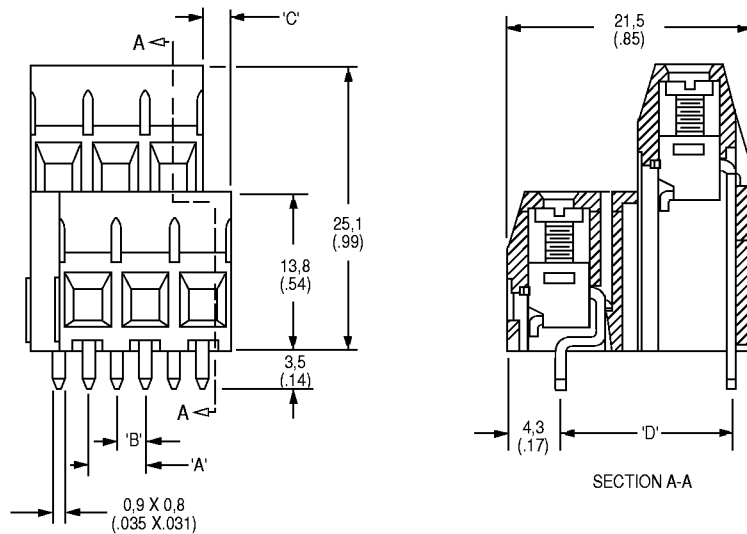
ENVIRONMENTAL PROPERTIES

MAX. OPERATING TEMPERATURE: 105° C.



5mm Pitch

5LEEV (vertical solder pins)



A	B	C	D
5,0 (.197)	2,5 (.099)	2,5 (.099)	15 (.59)

Ordering Information

# OF TERMINALS	5MM VERTICAL GREEN	5MM VERTICAL BLACK
04	5LEEV-04	5LEEV-04-1
06	5LEEV-06	5LEEV-06-1
08	5LEEV-08	5LEEV-08-1
10	5LEEV-10	5LEEV-10-1
12	5LEEV-12	5LEEV-12-1
14	5LEEV-14	5LEEV-14-1
16	5LEEV-16	5LEEV-16-1
18	5LEEV-18	5LEEV-18-1
20	5LEEV-20	5LEEV-20-1
22	5LEEV-22	5LEEV-22-1
24	5LEEV-24	5LEEV-24-1

