

**SPECIFICATIONS**

**Mechanical**

**Contact Retention Force:** 1.02Kg(2.3Lb)min.  
**Durability:** 250 Cycles

**Electrical**

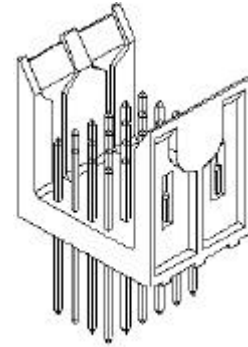
**Voltage Rating:** 750V  
**Current Rating:** 1A  
**Contact Resistance:** 10mW max.  
**Dielectrical Withstanding Voltage:** 1000V  
**Insulation Resistance:** 1000MW min.

**Physical**

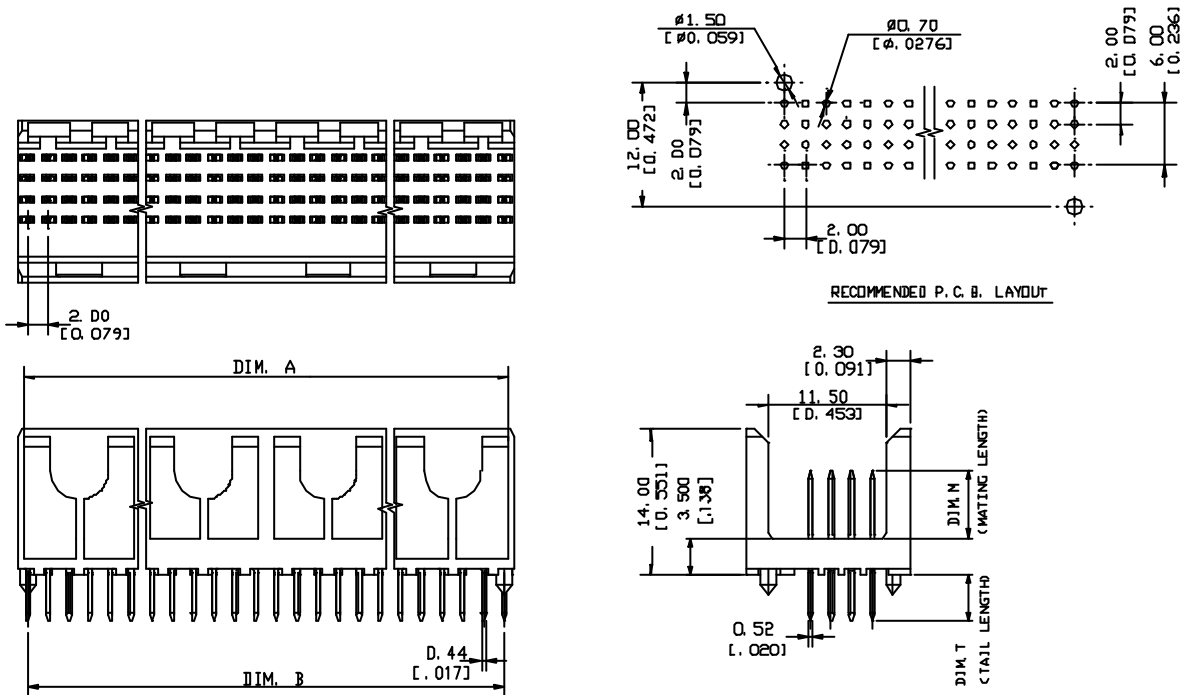
**Housing:** LCP, UL 94-0, Ivory White  
**Contact:** Phosphor Bronze  
**Plating:** See "ORDERING INFORMATION"

**FUTURE BUS CONNECTOR**

**1F Series,**  
**Plug. Solder Fit Type**  
**2.0mm [.078"] Pitch**  
**4Rows, Short Body**



**DRAWING**



**ORDERING INFORMATION**

PRODUCT NO.: 1F11\*\*\*5-S\*\*7

Mating Area plating:

5=45u" Gold

TAIL LENGTH(T)

- 1=2.9mm
- 2=3.7mm
- 3=4.5mm
- 4=2.65mm
- 5=3.45mm
- 6=4.25mm

MATING LENGTH(M)

- 1=5.00mm
- 2=5.75mm
- 3=6.50mm
- 4=7.25mm
- 5=8.00mm

1F110245-S537	24	11.90	10.00
		[.469]	[.3937]
1F110485-S537	48	23.90	22.00
		[.941]	[.866]
1F110965-S537	96	47.90	46.00
		[1.866]	[1.811]
1F111925-S537	192	95.90	94.00
		[3.776]	[3.70]
P/N	POS.	DIM. A	DIM. B