

FEATURES AND SPECIFICATIONS

Features and Benefits

- Polarized to mating connector
- Standard kinked PC tails for retention to PC board
- Available in standard white or 4 optional colors

Reference Information

Product Specification: PS-42219
 Packaging: Bulk
 UL File No.: E29179
 CSA File No.: LR19980
 Mates With: 42219 connectors
 Designed In: Millimeters

Electrical

Voltage: 250V
 Current: 3.0A
 Contact Resistance: 20mΩ max.
 Dielectric Withstanding Voltage: 1000V AC
 Insulation Resistance: 1000 MΩ min.

Mechanical

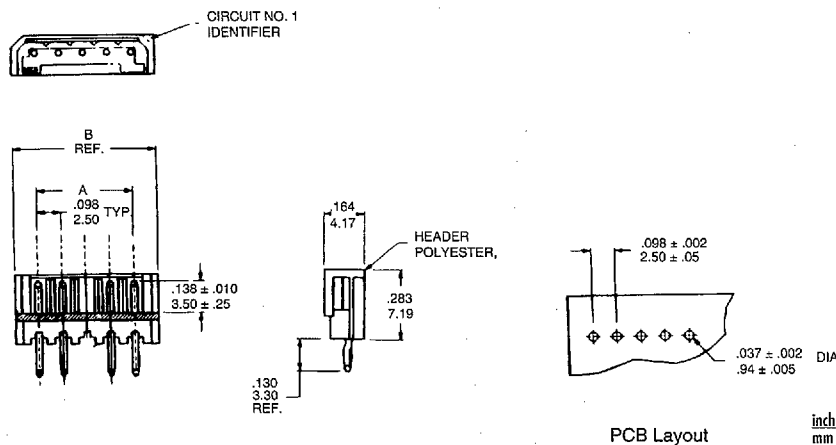
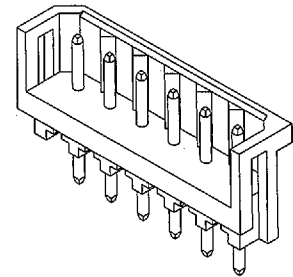
Mating Force: 1.8kg max.
 Unmating Force: 0.15kg min.
 Durability: 25 cycles

Physical

Housing: Polyester, UL 94V-0
 Contact: Brass .027" diameter
 Plating: Tin
 Temperature: -40 to +105°C

molex® 2.50mm (.098") Pitch SPOX™ Wire-to-Board Header

42267 Shrouded In-Line Footprint



ORDERING INFORMATION AND DIMENSIONS

Circuits	Order No.					Dimension	
	Natural (White)	Red	Yellow	Orange	Green	A	B
2	• 22-43-8020	22-43-8021	22-43-8024	22-43-8025	22-43-8026	2.50 (.098)	7.40 (.291)
3	• 22-43-8030	22-43-8031	22-43-8034	22-43-8035	22-43-8036	5.00 (1.97)	9.90 (.390)
4	• 22-43-8040	22-43-8041	22-43-8044	22-43-8045	22-43-8046	7.50 (.295)	12.40 (.488)
5	• 22-43-8050	22-43-8051	22-43-8054	22-43-8055	22-43-8056	10.00 (.394)	14.90 (.587)
6	• 22-43-8060	22-43-8061	22-43-8064	22-43-8065	22-43-8066	12.50 (.492)	17.40 (.685)
7	• 22-43-8070	22-43-8071	22-43-8074	22-43-8075	22-43-8076	15.00 (.591)	19.90 (.783)
8	• 22-43-8080	22-43-8081	22-43-8084	22-43-8085	22-43-8086	17.50 (.689)	22.40 (.882)
9	• 22-43-8090	22-43-8091	22-43-8094	22-43-8095	22-43-8096	20.00 (.787)	24.90 (.980)
10	• 22-43-8100	22-43-8101	22-43-8104	22-43-8105	22-43-8106	22.50 (.886)	27.40 (1.079)
11	• 22-43-8110	22-43-8111	22-43-8114	22-43-8115	22-43-8116	25.00 (.984)	29.90 (1.177)
12	• 22-43-8120	22-43-8121	22-43-8124	22-43-8125	22-43-8126	27.50 (1.083)	32.40 (1.276)
13	• 22-43-8130	22-43-8131	22-43-8134	22-43-8135	22-43-8136	30.00 (1.181)	34.90 (1.374)
14	• 22-43-8140	22-43-8141	22-43-8144	22-43-8145	22-43-8146	32.50 (1.280)	37.40 (1.472)
15	• 22-43-8150	22-43-8151	22-43-8154	22-43-8155	22-43-8156	35.00 (1.378)	39.90 (1.571)

• US Standard Product, available through Molex franchised distributors