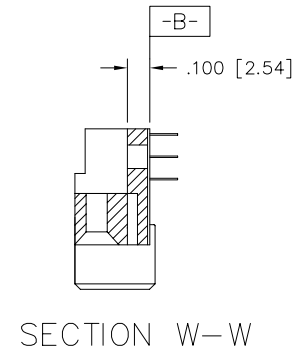
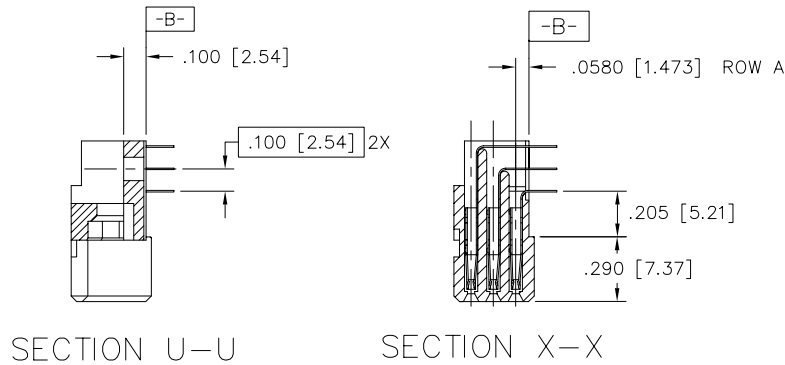
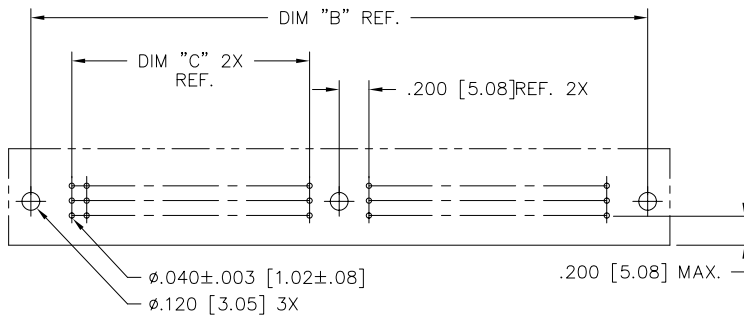


PRODUCT NUMBER	DIM.	LENGTH FORMULAS
SEE NOTE 1	DIM A	$.100/2.54 \times \text{NO. OF COLUMNS} + 1.05/26.7$
	DIM B	$.100/2.54 \times \text{NO. OF COLUMNS} + .750/19.05$
	DIM C	$.100/2.54 \times \text{NO. OF COLUMNS DIVIDED BY 2} - .100/2.54$



NOTES:

- PRODUCT NUMBERING CODE:
50829 - X YYY Z
 - X: TAIL LENGTH(NOTE 5)
 - YYY: NO. OF POSITIONS(NOTE 2)
 - Z: PLATING(NOTE 4)
 - BASE NUMBER
- THIS PRODUCT IS CONFIGURED IN SIZES OF 20 THRU 122 COLUMNS IN INCREMENTS OF TWO. i.e.: 20,22,24,26.....118,120,122.
- HOUSING MATERIAL: GLASS AND MINERAL FILLED HIGH TEMP. THERMOPLASTIC. FLAME RETARDANT PER UL94V-0. COLOR: BLACK. CONTACT MATERIAL: BeCu
- PLATING CONTACT AREA OPTIONS:
 1 = 30u"/.76u GOLD
 3 = 50u"/1.27u GOLD
 5 = 30u"/.76u GXT
 ALL SOLDER TAILS TIN/LEAD
- TAIL LENGTH OPTIONS:
 E = .125±.010 / 3.18±.25
 F = .145±.010 / 3.68±.25
 H = .180±.010 / 4.57±.25
- MANUFACTURE'S NAME, PART NUMBER AND LOT CODE TO APPEAR ON THIS SURFACE PER BUS-12-108.
- FOR DOCUMENTATION MENU, SEE SPECIFICATION BUS-01-057.



RECOMMENDED PCB LAYOUT
(ALL HOLES LOCATED ON .100 [2.54] GRID UNLESS OTHERWISE SPECIFIED)

mat'l. code		surface ISO 1302 ✓	tolerance ISO 406 ISO 1101	projection ⊕	product family HPC
ltr	ecn no	dr	date	tolerances unless otherwise specified	title
D				angles .XX±.01/.3 linear .xxx±.005/.13 0°±2' .xxxx±.0020/.051	3 ROW R/A RECEPTACLE 1 G.P., NO-RIB, GENERIC MNT.
				dr G. HULL 7/28/94 enr D. HORCHLER 6/8/94 chr D. HORCHLER 7/28/94 appd S. CLARK 8/5/94	dwg no 50829 sheet 2 of 2 size A3
sheet index	revision sheet				type Product Customer Drawing