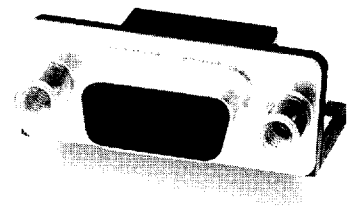


HIGH DENSITY 15 POSITION METAL SHELL RECEPTACLES FOR RIGHT ANGLE PCB MOUNTING



PHYSICAL PROPERTIES

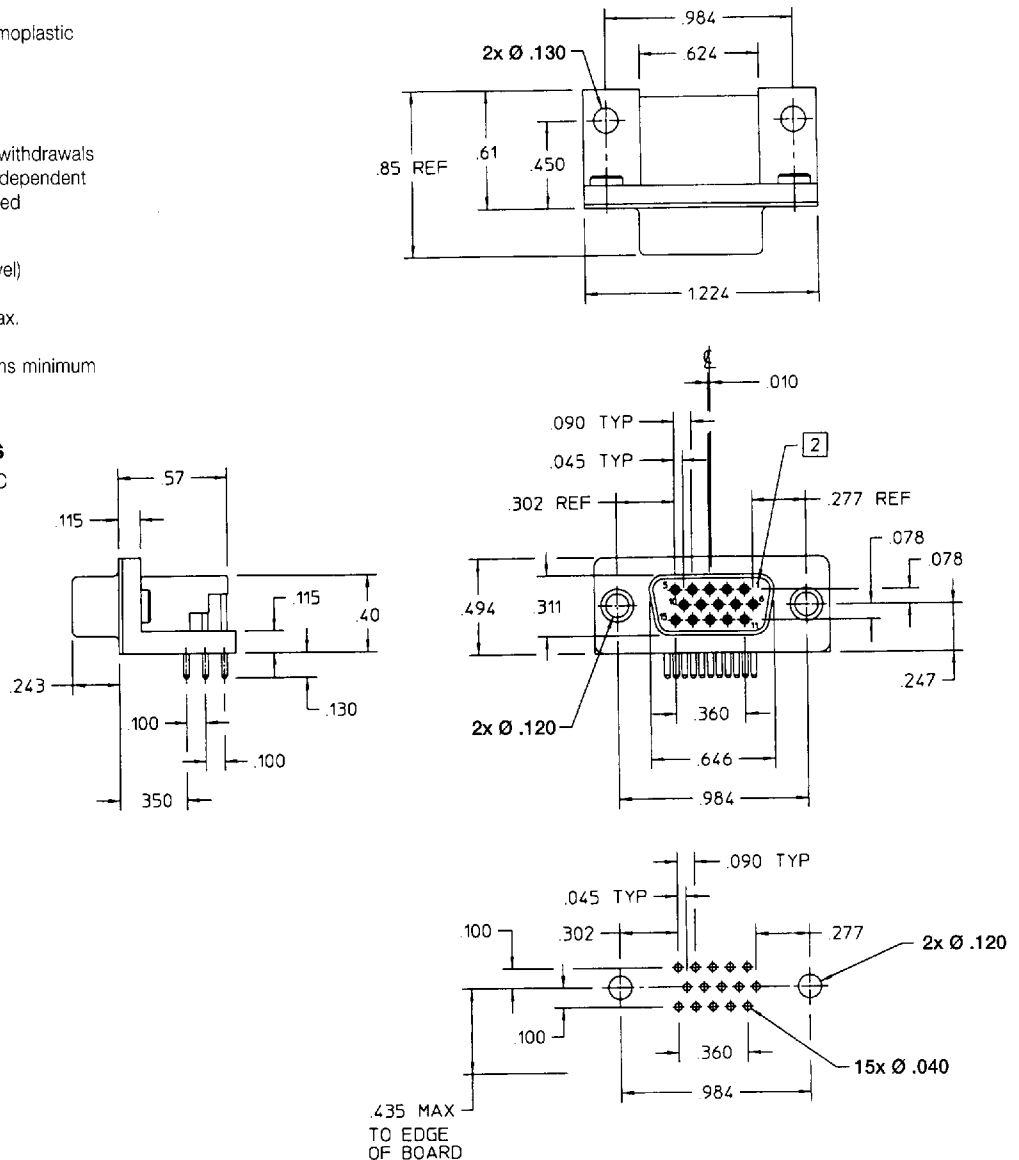
INSULATION MATERIAL: Glass filled thermoplastic rated UL 94V-0
COLOR: Black
CONTACTS: High strength copper alloy
METAL SHELL: Steel, bright tin plate
DURABILITY: up to 500 insertions and withdrawals without degradation of performance, dependent upon contact plating thickness selected

ELECTRICAL PROPERTIES

OPERATING VOLTAGE: 600 VDC (sea level)
CURRENT RATING: 5 Amperes
CONTACT RESISTANCE: 10 milliohms max. @ rated current
INSULATION RESISTANCE: 5000 megohms minimum
DIELECTRIC WITHSTANDING VOLTAGE: 1000 VAC minimum

ENVIRONMENTAL PROPERTIES

TEMPERATURE RATING: -55°C TO 125°C



Ordering Information

BULKHEAD MOUNTING STYLE	CONTACT PLATING: 30 MICROINCH GOLD			CONTACT PLATING: GOLD FLASH		
	.125" THRU	PLASTIC SNAPLATCH	METAL SNAPLATCH	.125" THRU	PLASTIC SNAPLATCH	METAL SNAPLATCH
15 125" Thru Hole	HDR15RA29A	HDR15RA29AP	HDR15RA29AS	HDR15RA24A	HDR15RA24AP	HDR15RA24AS
15 4-40 Standoff	HDR15RA29B	HDR15RA29BP	HDR15RA29BS	HDR15RA24B	HDR15RA24BP	HDR15RA24BS
15 4-40 Flush	HDR15RA29C	HDR15RA29CP	HDR15RA29CS	HDR15RA24C	HDR15RA24CP	HDR15RA24CS