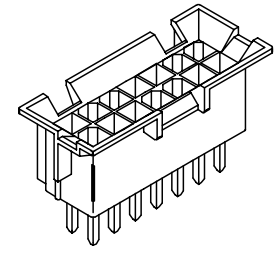
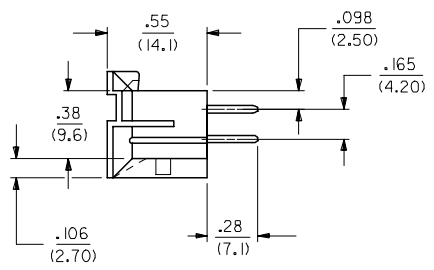
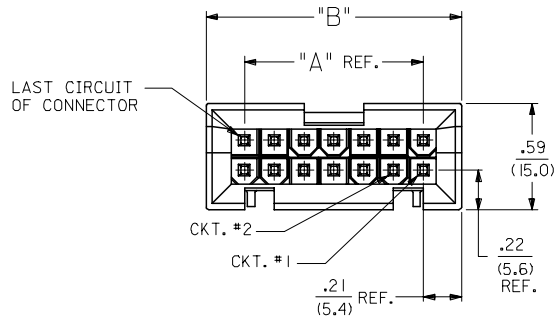


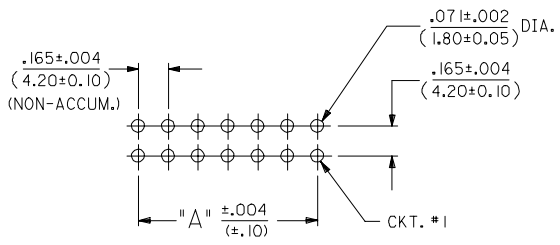
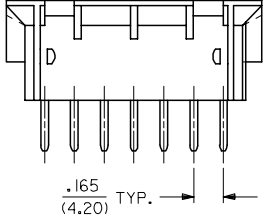
13 12 11 10 9 8 7 6 5 4 3 2 1

J
I
H
G
F
E
D
C
B
A

J
I
H
G
F
E
D
C
B
A

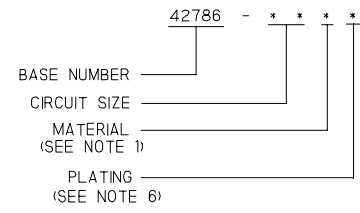


A-42786-****



PCB LAYOUT COMPONENT SIDE
MINIMUM RECOMMENDED PCB
THICKNESS .070/(1.78)
(SEE NOTE 5.)

LEGEND:



NOTES:

- 1) HOUSING MATERIAL: 1 = NYLON 6/6, U.L. 94V-2
COLOR: NATURAL.
2 = NYLON 6/6, U.L. 94V-0
COLOR: NATURAL.
- 2) TERMINAL MATERIAL: BRASS, ALLOY 260.
- 3) PART MATES WITH MINI-FIT JR. RECEPTACLES 5557, 42385 AND 42474.
- 4) PART ALLOWS FOR UP TO .100/(2.54) MISALIGNMENT WITH MATING RECEPTACLE IN ANY DIRECTION. SEE MATING CONNECTOR DRAWINGS FOR SPECIFIC ALLOWANCES.
- 5) PART IS DESIGNED IN METRIC.
- 6) TERMINAL PLATING:
 - 1 = .000100/(.00254) MIN. TIN OVER
.000050/(.00127) MIN. NICKEL.
 - 2 = .000015/(.00038) MIN. GOLD OVER
.000030/(.00076) MIN. NICKEL.
 - 3 = .000030/(.00076) MIN. GOLD OVER
.000050/(.00127) MIN. NICKEL.
- 7) PRODUCT SPECIFICATION: PS-5556-002 EXCEPT FOR HEADER TO PCB RETENTION FORCE
- 8) CONNECTOR ASSEMBLIES ARE NOT TO BE MATED OR UNMATED WHILE CIRCUITS ARE LIVE.
- 9) PACKAGING: TRAY PACK PER PK-42404-002.

2	J1
1	J2
SHT.	REV.

ADD NOTE 9 EC NO: U0P200519354 DRWN: JSCHAFER 2005/03/10 CHKD: ZOD 2005/03/10 APPR: YMARGULLI 2005/03/14 REV J2	QUALITY SYMBOLS ▽=0 ▽=0	GENERAL TOLERANCES (UNLESS SPECIFIED)	DIMENSION STYLE IN/MM	SCALE 2:1	DESIGN UNITS METRIC	THIRD ANGLE PROJECTION															
		<table border="1"> <tr> <th></th> <th>mm</th> <th>INCH</th> </tr> <tr> <td>4 PLACES</td> <td>± ---</td> <td>± ---</td> </tr> <tr> <td>3 PLACES</td> <td>± ---</td> <td>± .015</td> </tr> <tr> <td>2 PLACES</td> <td>± .38</td> <td>± ---</td> </tr> <tr> <td>1 PLACE</td> <td>± ---</td> <td>± ---</td> </tr> </table>		mm	INCH	4 PLACES	± ---	± ---	3 PLACES	± ---	± .015	2 PLACES	± .38	± ---	1 PLACE	± ---	± ---	DRAWN BY DATE RJF 12-27-90 CHECKED BY DATE RAS 12-27-90 APPROVED BY DATE RAS 12-27-90	TITLE VERTICAL HEADER ASSEMBLY MINI-FIT B.M.I. SERIES		
		mm	INCH																		
	4 PLACES	± ---	± ---																		
3 PLACES	± ---	± .015																			
2 PLACES	± .38	± ---																			
1 PLACE	± ---	± ---																			
DRAFT WHERE APPLICABLE MUST REMAIN WITHIN DIMENSIONS		SEE CHART	MATERIAL NO. SDA-42786-*	DOCUMENT NO.	SHEET NO. 1 OF 2																
THIS DRAWING CONTAINS INFORMATION THAT IS PROPRIETARY TO MOLEX INCORPORATED AND SHOULD NOT BE USED WITHOUT WRITTEN PERMISSION																					

12 11 10 9 8 7 6 5 4 3 2 1

	13	12	11	10	9	8	7	6	5	4	3	2	1		
	PART NUMBER	ENG. NUMBER	SIZE CKT.	(SEE NOTE 1.) HOUSING MATERIAL	(SEE NOTE 6.) TERMINAL PLATING	DIM. "A"	DIM. "B"								
J	15-24-8140	A-42786-1411	14	NYLON 6/6, 94V-2	TIN OVER NICKEL	.992 (25.20)	1.42 (36.0)								J
	15-24-8147	A-42786-1412	14	NYLON 6/6, 94V-2	15 M.I. GOLD	.992 (25.20)	1.42 (36.0)								
	15-24-8148	A-42786-1413	14	NYLON 6/6, 94V-2	30 M.I. GOLD	.992 (25.20)	1.42 (36.0)								
I	15-24-8108	A-42786-1013	10	NYLON 6/6, 94V-2	30 M.I. GOLD	.661 (16.80)	1.09 (27.6)								I
	15-24-8109	A-42786-1011	10	NYLON 6/6, 94V-2	TIN OVER NICKEL	.661 (16.80)	1.09 (27.6)								
H	15-24-8107	A-42786-1021	10	NYLON 6/6, 94V-0	TIN OVER NICKEL	.661 (16.80)	1.09 (27.6)								H
	15-24-8154	A-42786-1423	14	NYLON 6/6, 94V-0	30 M.I. GOLD	.992 (25.20)	1.42 (36.0)								
	15-24-8187	A-42786-1821	18	NYLON 6/6, V-0	TIN OVER NICKEL	1.323 (33.60)	1.75 (44.4)								
G	15-24-8248	A-42786-2413	24	NYLON 6/6, V-2	30 M.I. GOLD	1.819 (46.20)	2.24 (57.0)								G
	15-24-8104	A-42786-1023	10	NYLON 6/6, V-0	30 M.I. GOLD	.661 (16.80)	1.09 (27.6)								
	15-24-8247	A-42786-2421	24	NYLON 6/6, V-0	TIN OVER NICKEL	1.819 (46.20)	2.24 (57.0)								
F	15-24-8184	A-42786-1823	18	NYLON 6/6, V-0	30 M.I. GOLD	1.323 (33.60)	1.75 (44.4)								F
	42786-0623	A-42786-0623	6	NYLON 6/6, V-0	30 M.I. GOLD	.330 (8.38)	.76 (19.3)								
E	42786-1421	A-42786-1421	14	NYLON 6/6, V-0	TIN OVER NICKEL	.992 (25.20)	1.42 (36.0)								E
	42786-0621	A-42786-0621	6	NYLON 6/6, V-0	TIN OVER NICKEL	.331 (8.40)	.76 (19.2)								
	42786-0001	_____	16	NYLON 6/6, V-0	30 M.I. GOLD	1.157 (29.40)	1.58 (40.2)								
D														D	
C														C	
B														B	
A														A	

SEE SHEET ONE EC NO: U0PR200513984 DRWNLCS:TEWART 2005/01/14 CHKD:GOLGAR 2005/01/17 APPR:YMARGULLI 2005/01/18 J1	QUALITY SYMBOLS =0 =0	GENERAL TOLERANCES (UNLESS SPECIFIED)		DIMENSION STYLE IN/MM		SCALE 2:1	DESIGN UNITS METRIC	THIRD ANGLE PROJECTION					
		4 PLACES ± --- ± ---	3 PLACES ± --- ± .015	DRAWN BY MAB	DATE 04-20-97	TITLE VERTICAL HEADER ASSEMBLY MINI-FIT B.M.I. SERIES							
		2 PLACES ± .38 ± ---	1 PLACE ± --- ± ---	CHECKED BY RE	DATE 04-20-97	MOLEX INCORPORATED							
		ANGULAR ±1/2°		APPROVED BY RE	DATE 04-20-97	MATERIAL NO. SEE CHART	DOCUMENT NO. SDA-42786-*	SHEET NO. 2 OF 2					
DRAFT WHERE APPLICABLE MUST REMAIN WITHIN DIMENSIONS							THIS DRAWING CONTAINS INFORMATION THAT IS PROPRIETARY TO MOLEX INCORPORATED AND SHOULD NOT BE USED WITHOUT WRITTEN PERMISSION						