

CUSTOMER COPY

REV	ECN NO.	APP.	DATE
A	NEW DESIGN		

ORDER INFORMATION

1052 X X X X X

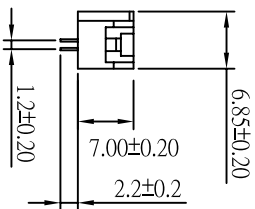
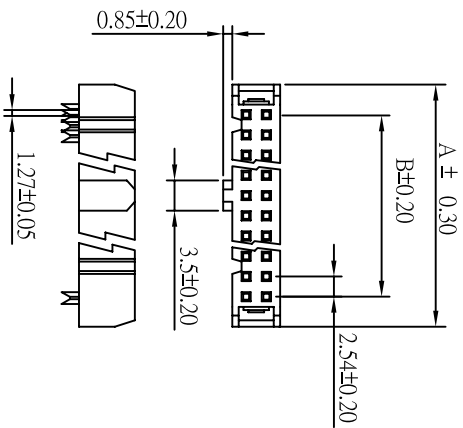
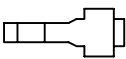
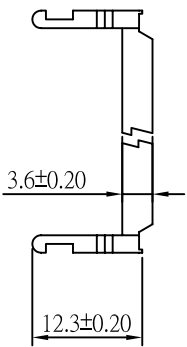
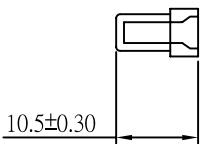
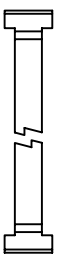
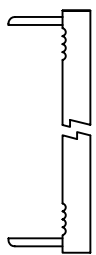
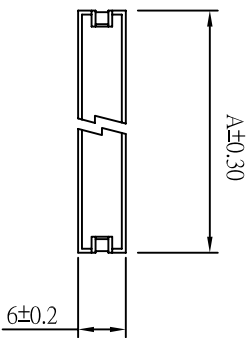
Plating:
2: Selective Gold
3: All Gold

No. Of Contact
06, 08, 10, 12, 14, 16, 20, 24, 26,
30, 34, 40, 44, 50, 56, 60, 62, 64

Color
0: Black
1: Blue
2: White
3: Gray

Style
0: 二件式 (W/O Strain Relief)
1: 三件式 (With Strain Relief)
2: 一件式 (W/O Cover)
3: 反折蓋 (Strain Relief)

Type
0: W/O Key
1: With Key



SPECIFICATION

- * Current Rating:
3 A
- * Withstanding Voltage:
500 VAC (1 min.)
- * Insulation Resistance:
1000 Megohms min.
- * Contact Resistance:
20 Milliohms max.
- * Operating Temperature:
-40°C to +85°C

MATERIAL

- * Contact: Brass
- * Insulator: PBT & 30% G. F.
- * Plated: Selective Gold
or All Gold

No. Of Contacts	Dim A	Dim B	No. Of Contacts	Dim A	Dim B
6	12.19	5.08	30	42.67	35.56
8	14.73	7.62	34	47.75	40.64
10	17.27	10.16	40	55.37	48.26
12	19.81	12.70	44	60.45	53.34
14	22.35	15.24	50	68.07	60.96
16	24.89	17.78	56	75.69	68.58
20	29.97	22.86	60	80.77	73.66
24	35.05	27.94	62	83.31	76.20
26	37.59	30.48	64	85.85	78.74



钰满乐企业股份有限公司
ACME LUX CO., LTD.

0.0±	SCALE:	TITLE:	PART NO:
0.00±	UNIT:	2.54MM (.100") Ceter	105200
0.000±	MM	I.D.C. Socket	APP BY:
			CHK BY:
			DR BY: JACK LIN
			DWG. NO. C1052XXXXXX