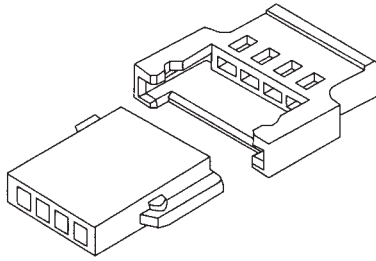
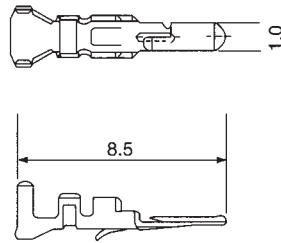


# WW 079 CONNECTOR SYSTEM

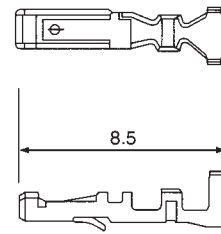
.079" (2.0mm) pitch wire-to-board type



WW079-MTP



WW079-FTP



PART NO.	WIRE RANGE		MATERIAL/	THICKNESS	INSULATION	REEL
	AWG#	mm <sup>2</sup>	FINISH	mm	O.D.(mm)	PCS
WW079-MTP	24-28	0.2-0.08	BRASS/TIN	0.20	1.5-1.1	10000
WW079-FTP	24-28	0.2-0.08	PHOS/TIN	0.20	1.5-1.1	10000

## WW079-M SERIES

ACCEPT WW 079-FTP

MATERIAL : NYLON 66UL 94V-0

CURRENT RATING : 2A AC,DC

VOLTAGE RATING : 125V AC,DC

CONTACT RESISTANCE : 20m Ω MAX

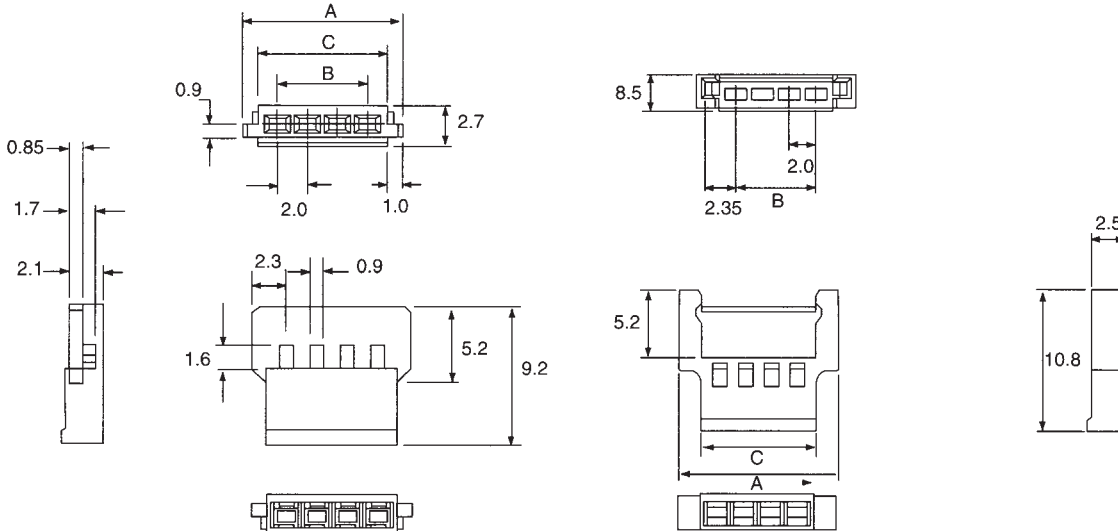
## WW079-F SERIES

ACCEPT WW 079-MTP

INSULATION RESISTANCE : 500M Ω MIN

WITHSTANDING VOLTAGE : 1000V AC/MINUTE

TEMPERATURE RANGE : -25°C TO +85°C



POLES	PART NO.	DIMENSIONS (mm)			POLES	PART NO.	DIMENSIONS (mm)		
		A	B	C			A	B	C
2	WW079-M02	6.60	2.00	4.60	2	WW079-F02	8.00	2.00	4.60
3	WW079-M03	8.60	4.00	6.60	3	WW079-F03	10.00	4.00	6.60
4	WW079-M04	10.60	6.00	8.60	4	WW079-F04	12.00	6.00	8.60
5	WW079-M05	12.60	8.00	10.60	5	WW079-F05	14.00	8.00	10.00
6	WW079-M06	14.60	10.00	12.60	6	WW079-F06	16.00	10.00	12.00
7	WW079-M07	16.60	12.00	14.60	7	WW079-F07	18.00	12.00	14.00
8	WW079-M08	18.60	14.00	16.60	8	WW079-F08	20.00	14.00	16.00
9	WW079-M09	20.60	16.00	18.60	9	WW079-F09	22.00	16.00	18.00
10	WW079-M10	22.60	18.00	20.60	10	WW079-F10	24.00	18.00	20.00