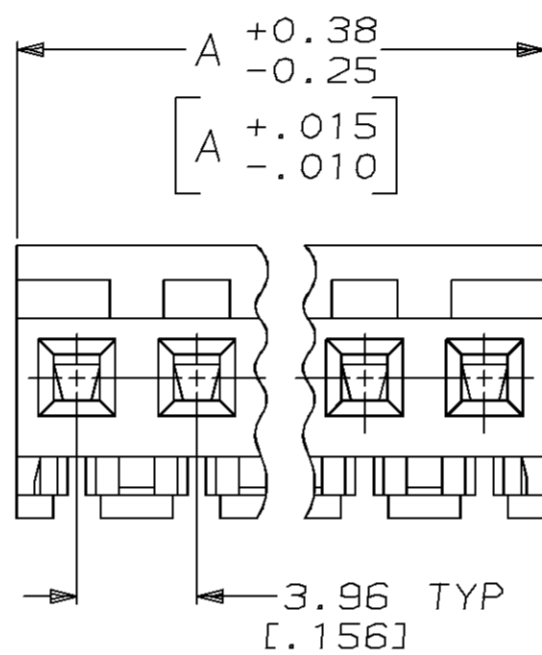
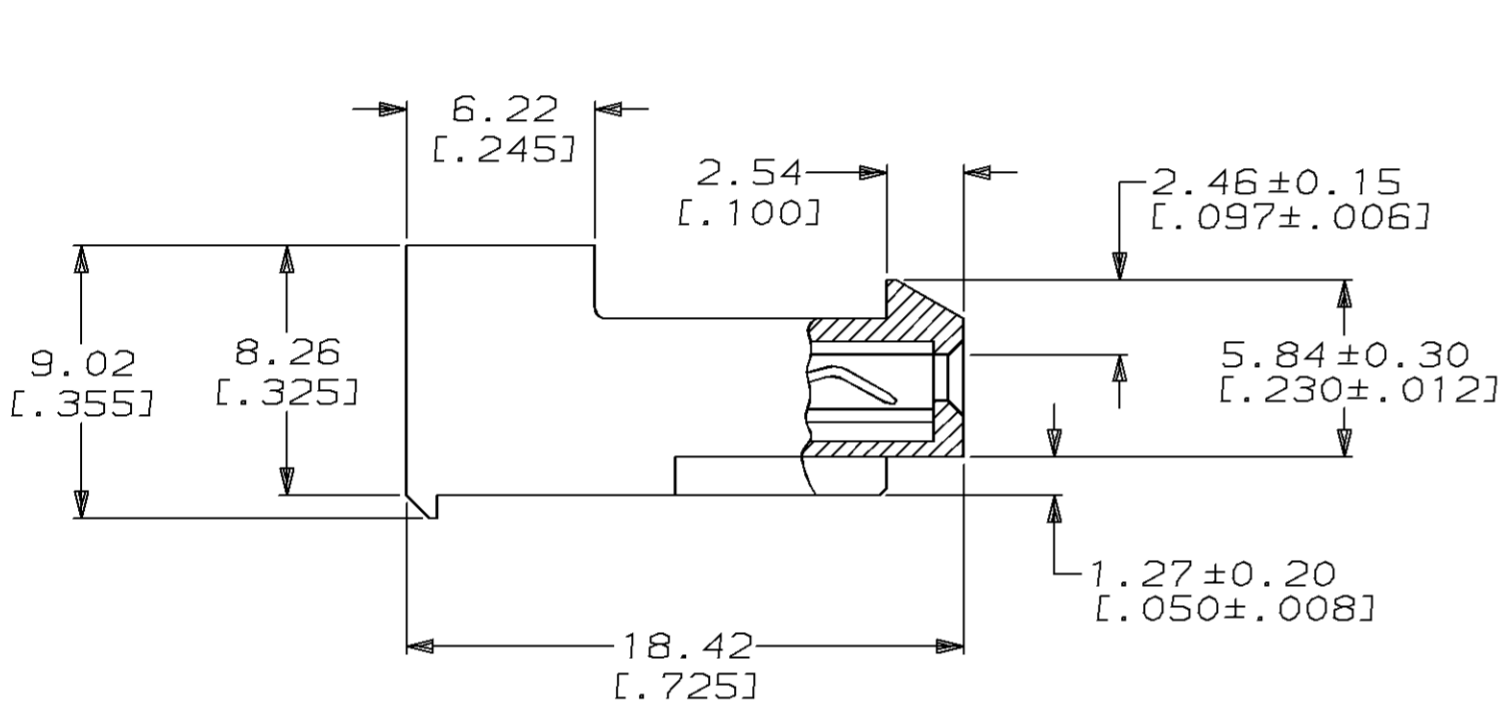
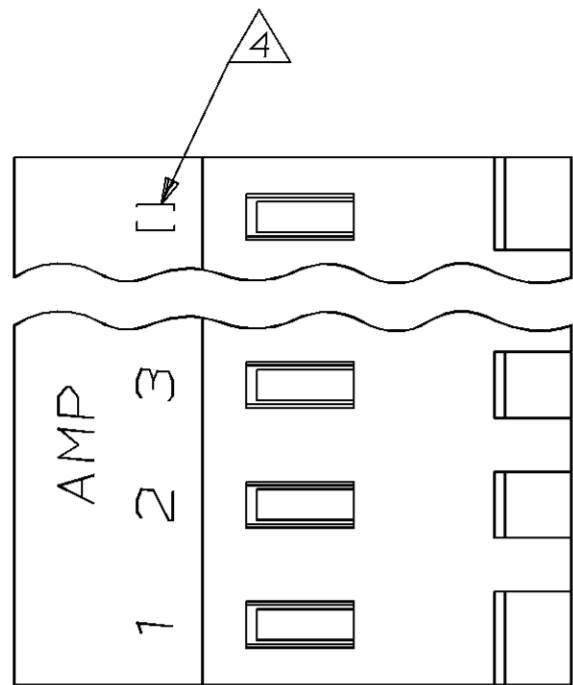


THIS DRAWING IS UNPUBLISHED. RELEASED FOR PUBLICATION ,19 .  
 © COPYRIGHT 19 BY AMP INCORPORATED. ALL INTERNATIONAL RIGHTS RESERVED.

LOC	DIST	P	F	ZONE	LTR	DESCRIPTION	DATE	APPD
CM	54				H	REACT -2, -3, -5 THRU -24 AND REV PER EC 0730-0242-95	3-11-96	BL RS



① MATERIAL: CONNECTOR - NYLON UL94V-2 (BLUE).  
 CONTACTS - 0.30 [.012] THICK COPPER ALLOY  
 (0.00038 [.000015] GOLD)

- CONTACTS ACCEPT 26 AWG WIRE WITH 2.41 [.095] MAX INSULATION DIAMETER.
- CONTACTS MUST ACCEPT 1.14±0.03 [.045±.001] SQUARE POST AND REMAIN LOCKED IN POSITION.

④ IDENTIFICATION NUMBER FOR LAST CIRCUIT MAY NOT APPEAR ON ALL ASSEMBLIES.

- DIMENSIONS IN BRACKETS ARE IN INCHES.
- HOUSING FEATURES ARE: CLOSED END WITH LOCKING RAMP.

95.10	[3.744]	24	2-641152-4
91.14	[3.588]	23	2-641152-3
87.17	[3.432]	22	2-641152-2
83.21	[3.276]	21	2-641152-1
79.25	[3.120]	20	2-641152-0
75.29	[2.964]	19	1-641152-9
71.32	[2.808]	18	1-641152-8
67.36	[2.652]	17	1-641152-7
63.40	[2.496]	16	1-641152-6
59.44	[2.340]	15	1-641152-5
55.47	[2.184]	14	1-641152-4
51.51	[2.028]	13	1-641152-3
47.55	[1.872]	12	1-641152-2
43.59	[1.716]	11	1-641152-1
39.62	[1.560]	10	1-641152-0
35.66	[1.404]	9	641152-9
31.70	[1.248]	8	641152-8
27.74	[1.092]	7	641152-7
23.77	[.936]	6	641152-6
19.81	[.780]	5	641152-5
15.85	[.624]	4	641152-4
11.89	[.468]	3	641152-3
7.92	[.312]	2	641152-2

DIM A	NO OF CIRCUITS	PART NO
AMP Incorporated Harrisburg, PA 17105-3608		
NAME		
MTA-156 CONNECTOR ASSEMBLY, 26 AWG, STANDARD		
SIZE	CAGE CODE	DRAWING NO
③	00779	641152
SCALE	SHEET	
4:1	1 OF 1	

DO NOT SCALE PRINT. UNLESS SPECIFIED DIMENSIONS IN mm [INCHES] TOLERANCES ON :	DR 2-12-91 B. LEWIS
2 PLC DEC ± -	CHK 2-12-91 R. SWING
3 PLC DEC ± 0.13 [.005]	APPD 2-20-91 D. CLARK
ANGLES ± -	APPD 2-20-91 D. CLARK
MATERIAL	PRODUCT SPEC
①	108-1051
FINISH	APPLICATION SPEC
①	114-1020
	WEIGHT -

METRIC