



## Standard DIN 4030-[\*]-[\*\*]

\*Number of contacts;  
Options are: **3, 4, 5, 6, 7, 8**  
\*\* Gender; Options are:  
**M** = male  
**F** = female

### MATERIALS:

- Insulator: UL94V-0 / PBT glass filled
- Contacts: Pin = Brass, Socket = Phosphor bronze
- Plating: Tin
- Operating temperature: -55°C to +105°C
- Metal shell: Nickel plated
- Cover: ABS
- Strain relief cap: PVC
- Color: Black

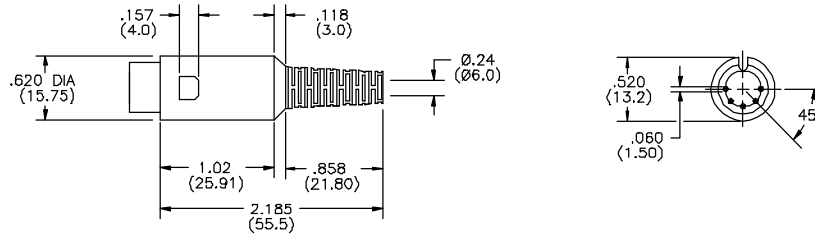
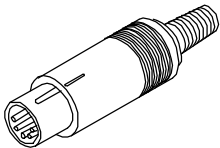
### ELECTRICAL:

- Current rating: 1 AMP maximum
- Insulation resistance: 500 Megohms minimum
- Dielectric withstanding voltage: 500 VAC
- Contact resistance: 30 milliohms maximum

### FEATURES:

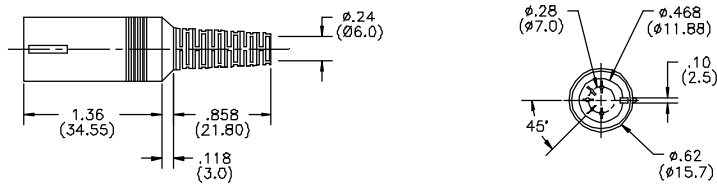
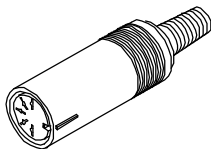
- Snap together design
- Quick easy assembly
- Signal / power capability
- Applicable wires: 20 AWG

### 4030 Male



3-PIN	4-PIN	5-PIN	6-PIN	7-PIN	8-PIN
3P	4P	5P	6P	7P	8P

### 4030 Female



MODEL NO.	4030-3P	4030-4P	4030-5P	4030-6P	4030-7P	4030-8P
ARRANGEMENT OF CONTACTS						