

General Specifications

MATERIALS

Insulator: Blue glass filled thermoplastic polyester Valox UL 94V-O Approved;
Green glass filled polyphenylene sulfide Ryton UL 94V-O Approved;
Natural brown polyetheretherketone Peek UL 94V-O Approved;
Other materials available.

Contacts: Phosphor Bronze (Standard); Beryllium Copper; Pfinodal;
Beryllium Nickle.

Contact Plating: Gold and/or Tin over .000050" Nickle Under Plate.

UL File Number: E64287

CSA File Number: 69695

Federal ID Number: 54453

MECHANICAL

Board Insertion Force: 16 oz. maximum per contact using
.062" (1.57) steel test blade

Board Withdraw Force: 1 oz. minimum per contact using
.062" (1.57) steel test blade

ELECTRICAL

Insulation Resistance: 5,000 megohms

Dielectric Withstanding Voltage:

Contact

Centers—	.050 (1.27)	.100(2.54)	.125 (3.17)	.150 (3.81)	.156 (3.96)
Voltage—	250 VDC	600 VDC	800 VDC	1500 VDC	1800 VDC

Current Rating: 3 amperes

Voltage Drop: 30 millivolts at rated current

Contact Resistance: 10 milliohms maximum at 3 amp rating.

ENVIRONMENTAL

Solvent Resistance: Perchloroethylene, Freon 113, Freon 11, Trichloroethylene

Operating Temperature: Valox* -65° to +135° C Phosphor Bronze -65° to +125° C
Ryton* -65° to +220° C Beryllium Copper -65° to +150° C
Peek -65° to +250° C Pfinodal* -65° to +200° C
Beryllium Nickle -65° to +300° C

(Continuous temperatures, higher for short duration.)

*Or equivalent

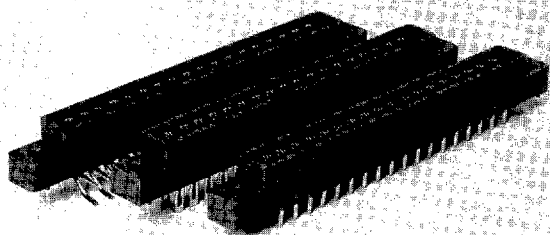
Special Applications

Sullins connectors are available with over 700 modifications for customers with specific applications. If your design application has unique dimensions, requires special materials for insulators or contacts, or demands an unusual plating thickness, etc., Sullins will be happy to evaluate your engineering requirements.



.156 (3.96 mm) contact centers

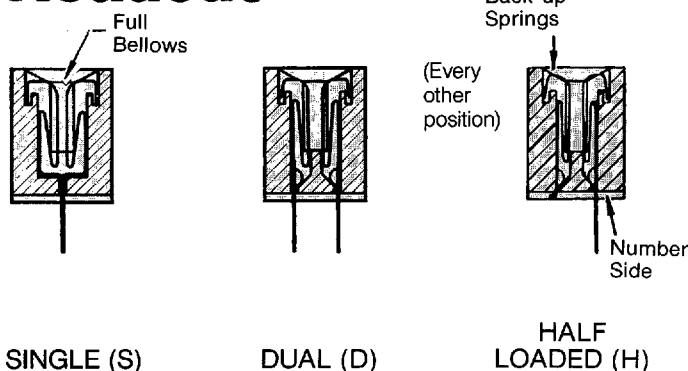
A-61-41-13



Features

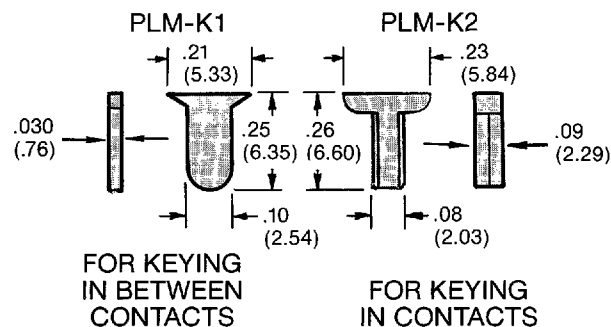
- Multi Bus I P1 available in all configurations
- Accommodates .062 (± .008) PC Board
- Solvent resistant insulator U.L. recognized
- Between contact polarization available
- 3 ampere current rating
- Contact resistance 10 milliohms max
- Bifurcated contacts
- Blue Valox or Green Ryton insulator

Readout

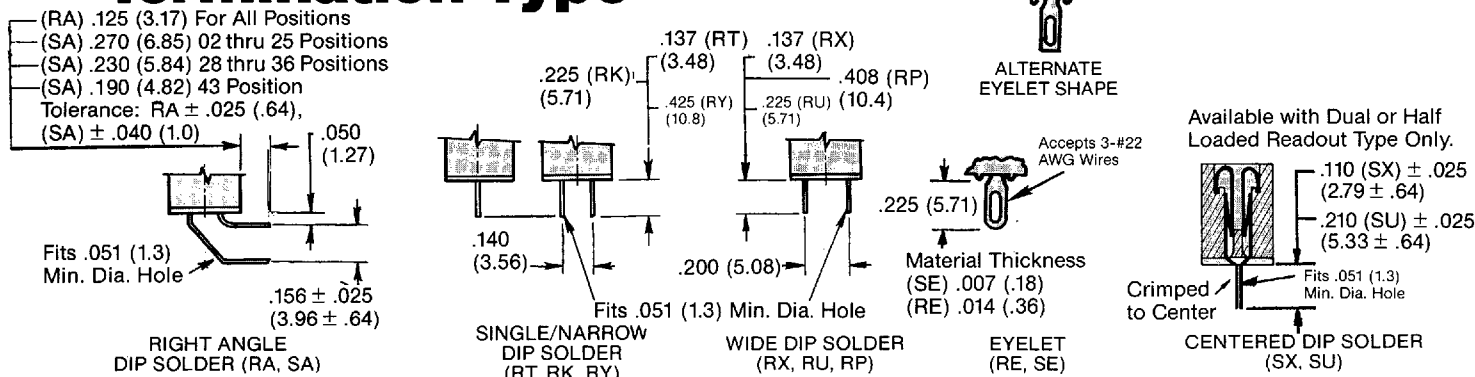


Polarizing Key

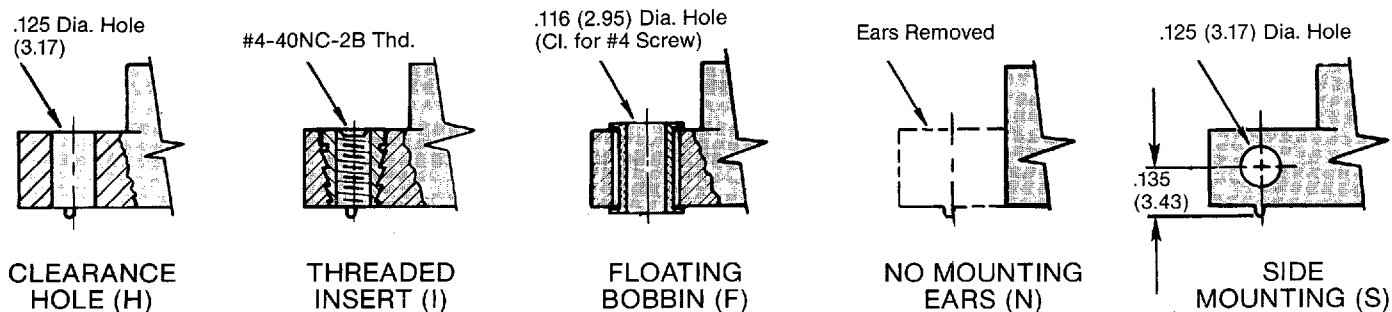
Order Separately



Termination Type



Mounting Style



Low Profile Dip Solder/Eyelet Edgcard Connectors

Sullins orderline:
619/744-0125
Fax/744-6081

Part Number Coding

See page 35 for additional modifications.

MATERIALS (Insulator/Contact)

- E = Valox/Phosphor Bronze (Standard)
- H = Valox/Beryllium Copper
- R = Ryton/Phosphor Bronze
- A = Ryton/Beryllium Copper
- C = Ryton/Beryllium Nickel (Consult Factory)
- N = Peek/Beryllium Copper (Consult Factory)
- W = Peek/Beryllium Nickel (Consult Factory)
- F = Ryton/Pfinodal* (Consult Factory)

CONTACT FINISH

Contact Surface	Termination	
Z = .000010 Gold	.000100 Tin	.000050
X = .000030 Gold	.000100 Tin	Nickle
G = .000010 Gold	.000005 Gold	underplate
Y = .000030 Gold	.000005 Gold	
Contact Surface	Overall Plating	
T = .000100 Tin	.000100 Tin	
S = .000010 Gold	.000010 Gold	
M = .000030 Gold	.000010 Gold	

CONTACT CENTERS

M = .156 (3.96)

NUMBER OF CONTACT POSITIONS

02 thru 43

MODIFICATIONS (Consult Factory)

OMIT FOR STANDARD

-S13 = Card Extender Formed to Fit .062 (1.57) PCB

MOUNTING STYLE

- H = Clearance Hole
- N = No Mounting Ears
- S = Side Mounting
- I = Threaded Insert
- F = Floating Bobbin

TERMINATION TYPE

RA = .125 Right Angle Dip Solder	RP = .200 x .408 Dip Solder
SA = Long Right Angle Dip Solder	SX = .110 (2.79) Centered Dip Solder
RT = Single/.140 x .137 Dip Solder	SU = .210 (5.33) Centered Dip Solder
RK = Single/.140 x .225 Dip Solder	SE = .007 (.18) Thick Eyelet .140 x .225
RY = .140 x .425 Dip Solder	RE = .014 (.36) Thick Eyelet .140 x .225
RX = .200 x .137 Dip Solder	
RU = .200 x .225 Dip Solder	

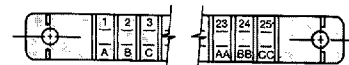
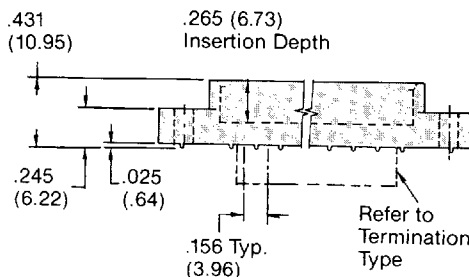
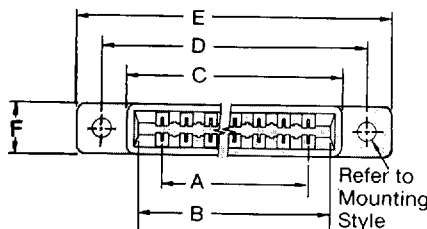
READOUT

- D = Dual
- S = Single (Available with Overall Plating and RT, RK, RE, RZ Termination Only)
- H = Half Loaded

*High tin solder cannot be used with Pfinodal contacts in applications greater than 150°C. Consult factory for recommendation.

Dimensions

Dimensions in () are in millimeters, all others are in inches. Tolerances with Ryton Insulator material may vary slightly due to shrinkage differential; consult factory.



Contact Markings
(Letters G, I, O & Q Not Used)

- SIZES 02 THRU 25
- 1 2 23 24
- A B AA BB
- SIZES 28 THRU 43
- 1 2 23 24
- A B A B

**MULTI
BUS I**

PART NUMBER †	NUMBER OF CONTACTS	INCHES						MILLIMETERS					
		A ±.008	B ±.008	C ±.015	D ±.010	E MAX	F ±.005	A ±.020	B ±.020	C ±.038	D ±.025	E MAX	F ±.013
EZM02 ___ ‡	2/4	.156	.476	.596				3.96	12.09	15.14			
EZM03 ___ ‡	3/6	.312	.632	.752				7.92	16.05	19.10			
EZM06 ___	6/12	.780	1.100	1.220	1.533	1.875		19.81	27.94	30.99	38.94	47.63	
EZM08 ___	8/16	1.092	1.412	1.532	1.845	2.187		27.74	35.86	38.91	46.86	55.55	
EZM10 ___	10/20	1.404	1.724	1.844	2.157	2.499		35.66	43.79	46.84	54.79	63.47	
EZM11 ___	11/22	1.560	1.880	2.000	2.313	2.655		39.62	47.75	50.80	58.75	67.44	
EZM12 ___	12/24	1.716	2.036	2.156	2.469	2.811	.325	43.58	51.71	54.76	62.71	71.40	8.255
EZM15 ___	15/30	2.184	2.504	2.624	2.937	3.279		55.47	63.60	66.65	74.60	83.29	
EZM18 ___	18/36	2.652	2.972	3.092	3.405	3.747		67.36	75.49	78.54	86.49	95.17	
EZM22 ___	22/44	3.276	3.596	3.716	4.029	4.371		83.21	91.34	94.38	102.34	111.02	
EZM24 ___	24/48	3.588	3.908	4.028	4.341	4.683		91.13	99.26	102.31	110.26	118.95	
EZM25 ___	25/50	3.744	4.064	4.184	4.497	4.839		95.09	103.22	106.27	114.22	122.91	
EZM28 ___	28/56	4.212	4.532	4.652	4.964	5.303	.438	106.98	115.11	118.16	126.08	134.69	11.125
EZM36 ___	36/72	5.460	5.780	5.906	6.219	6.566		136.68	146.81	150.01	157.96	166.77	
EZM43 ___	43/86	6.552	6.872	7.000	7.302	7.643		166.42	174.55	177.80	185.47	194.13	12.700

†For complete part number add readout, termination type and mounting style from Part Number Coding (e.g. EZM18DREH).
 ‡Available with style N mounting only.