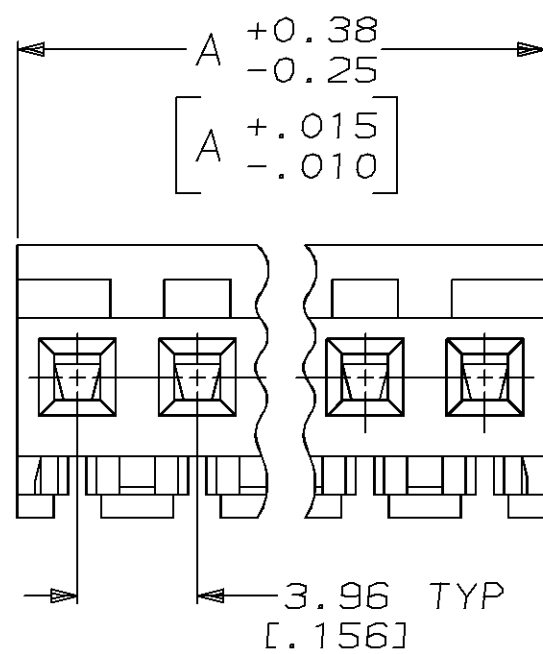
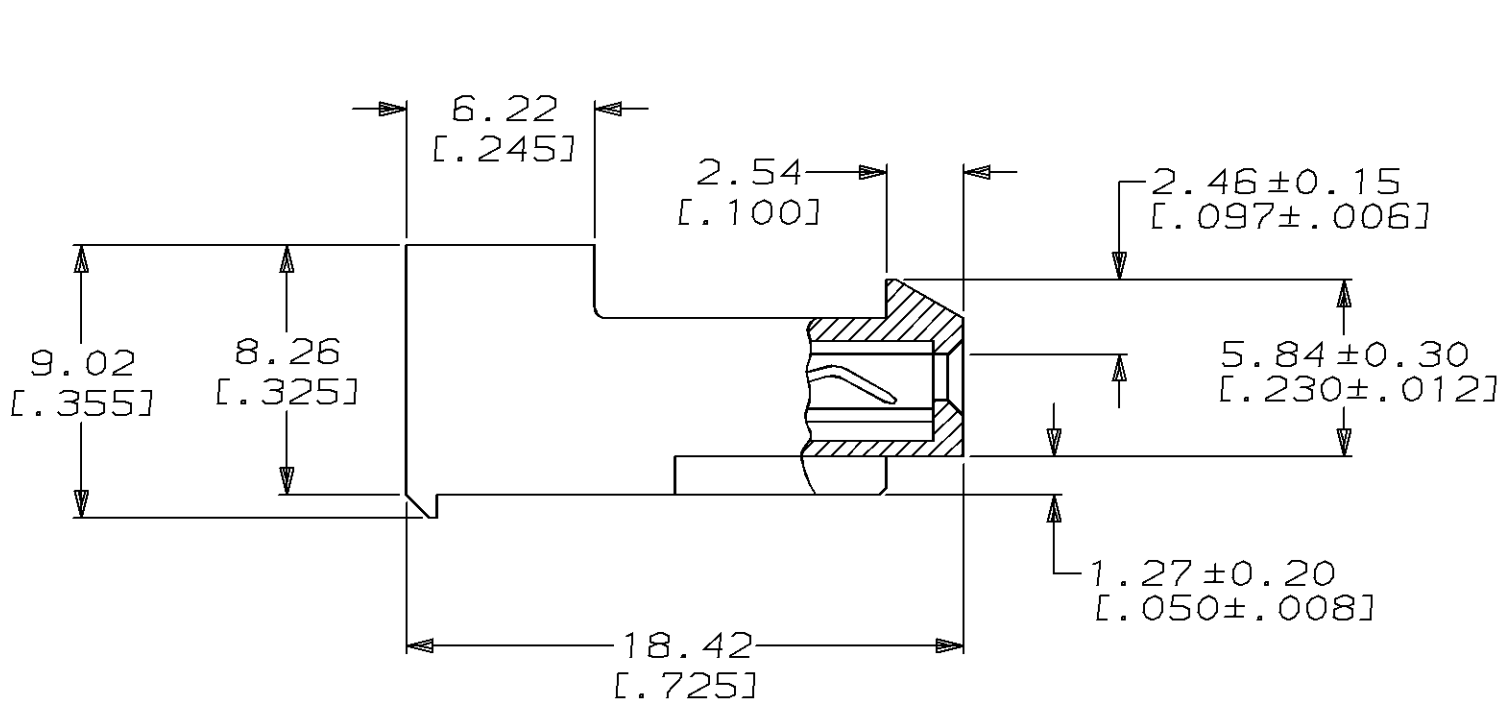
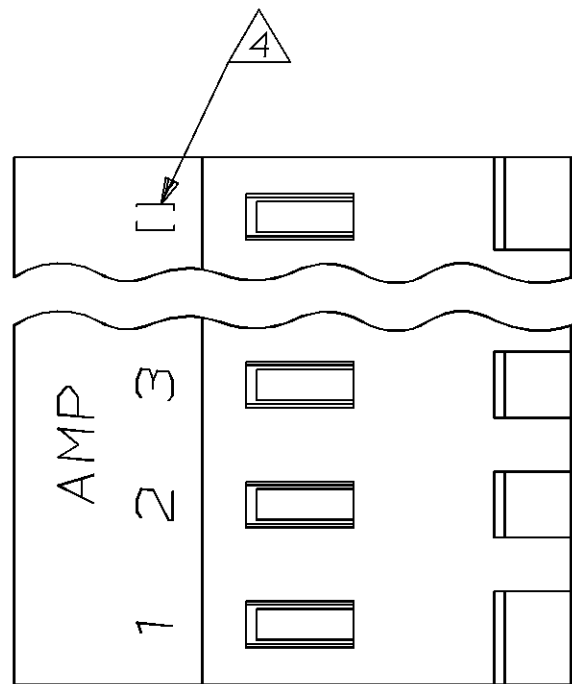


LOC	DIST	P	F	ZONE	LTR	REVISIONS	DATE	APPD
CM	54				H	REACT -2,-3,-5 THRU -24 AND REV PER EC 0730-0242-95	3-11-96	BL RS



95.10	[3.744]	24	2-641152-4
91.14	[3.588]	23	2-641152-3
87.17	[3.432]	22	2-641152-2
83.21	[3.276]	21	2-641152-1
79.25	[3.120]	20	2-641152-0
75.29	[2.964]	19	1-641152-9
71.32	[2.808]	18	1-641152-8
67.36	[2.652]	17	1-641152-7
63.40	[2.496]	16	1-641152-6
59.44	[2.340]	15	1-641152-5
55.47	[2.184]	14	1-641152-4
51.51	[2.028]	13	1-641152-3
47.55	[1.872]	12	1-641152-2
43.59	[1.716]	11	1-641152-1
39.62	[1.560]	10	1-641152-0
35.66	[1.404]	9	641152-9
31.70	[1.248]	8	641152-8
27.74	[1.092]	7	641152-7
23.77	[.936]	6	641152-6
19.81	[.780]	5	641152-5
15.85	[.624]	4	641152-4
11.89	[.468]	3	641152-3
7.92	[.312]	2	641152-2

- ① MATERIAL: CONNECTOR - NYLON UL94V-2 (BLUE).  
 CONTACTS - 0.30[.012] THICK COPPER ALLOY  
 (0.00038 [.000015] GOLD)
2. CONTACTS ACCEPT 26 AWG WIRE WITH 2.41[.095] MAX INSULATION DIAMETER.
3. CONTACTS MUST ACCEPT 1.14±0.03[.045±.001] SQUARE POST AND REMAIN LOCKED IN POSITION.
- ④ IDENTIFICATION NUMBER FOR LAST CIRCUIT MAY NOT APPEAR ON ALL ASSEMBLIES.
5. DIMENSIONS IN BRACKETS ARE IN INCHES.
6. HOUSING FEATURES ARE: CLOSED END WITH LOCKING RAMP.

		DIM A	NO OF CIRCUITS	PART NO
DO NOT SCALE PRINT. UNLESS SPECIFIED DIMENSIONS IN mm [INCHES] TOLERANCES ON : 2 PLC DEC ± - 3 PLC DEC ± 0.13 [.005] ANGLES ± -		AMP Incorporated Harrisburg, PA 17105-3608		
MATERIAL ①		NAME MTA-156 CONNECTOR ASSEMBLY, 26 AWG, STANDARD		
FINISH ①		SIZE	CAGE CODE	DRAWING NO
METRIC		C	00779	641152
DR 2-12-91 B. LEWIS CHK 2-12-91 R. SWING APPD 2-20-91 D. CLARK APPD 2-20-91 D. CLARK PRODUCT SPEC 108-1051 APPLICATION SPEC 114-1020 WEIGHT -		SCALE	4:1	SHEET 1 OF 1

**METRIC**