

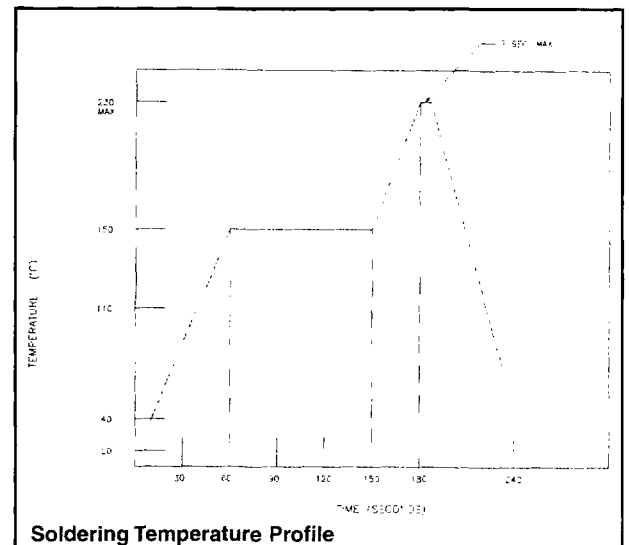
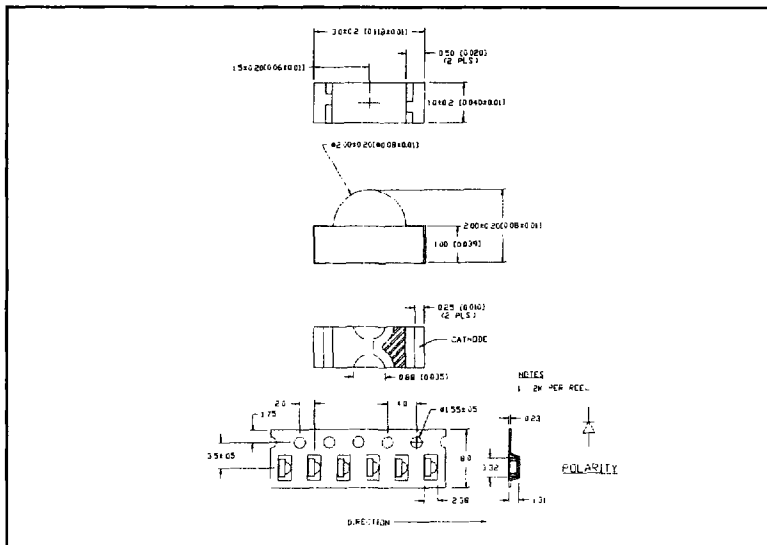
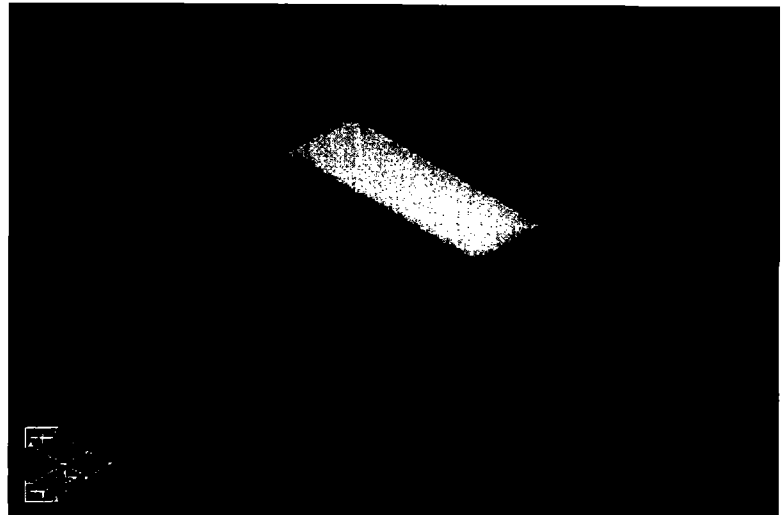
PACKAGE: 1x3mm Right Angle
CONSTRUCTION: PCB Carrier
 Epoxy Molded Lens

FEATURES

- Right angle light emission
- Small package
- Low cost construction
- Choice of colors

APPLICATIONS

- PCB status/fault indicator
- Signal direction indicator
- Edge lighting of LCD and Keyboards



PRODUCT SELECTION AND OPTO/ELECTRONIC SPECIFICATIONS (@25°C)

LUMEX PART NUMBER	Emitted Color	λ Pk nm	Lens Color	On Axis I _v mCD@ 20 mA	V _f @ 20 mA		Emission Angle 2 θ	Pieces per Reel
					Typ	Max		
SML-LXR85YC-TR	Yellow	585	Clear	3	2.0	2.8	160°	2000
SML-LXR85YC-TR	Yellow	585	Clear	2	2.0	2.8	160°	2000