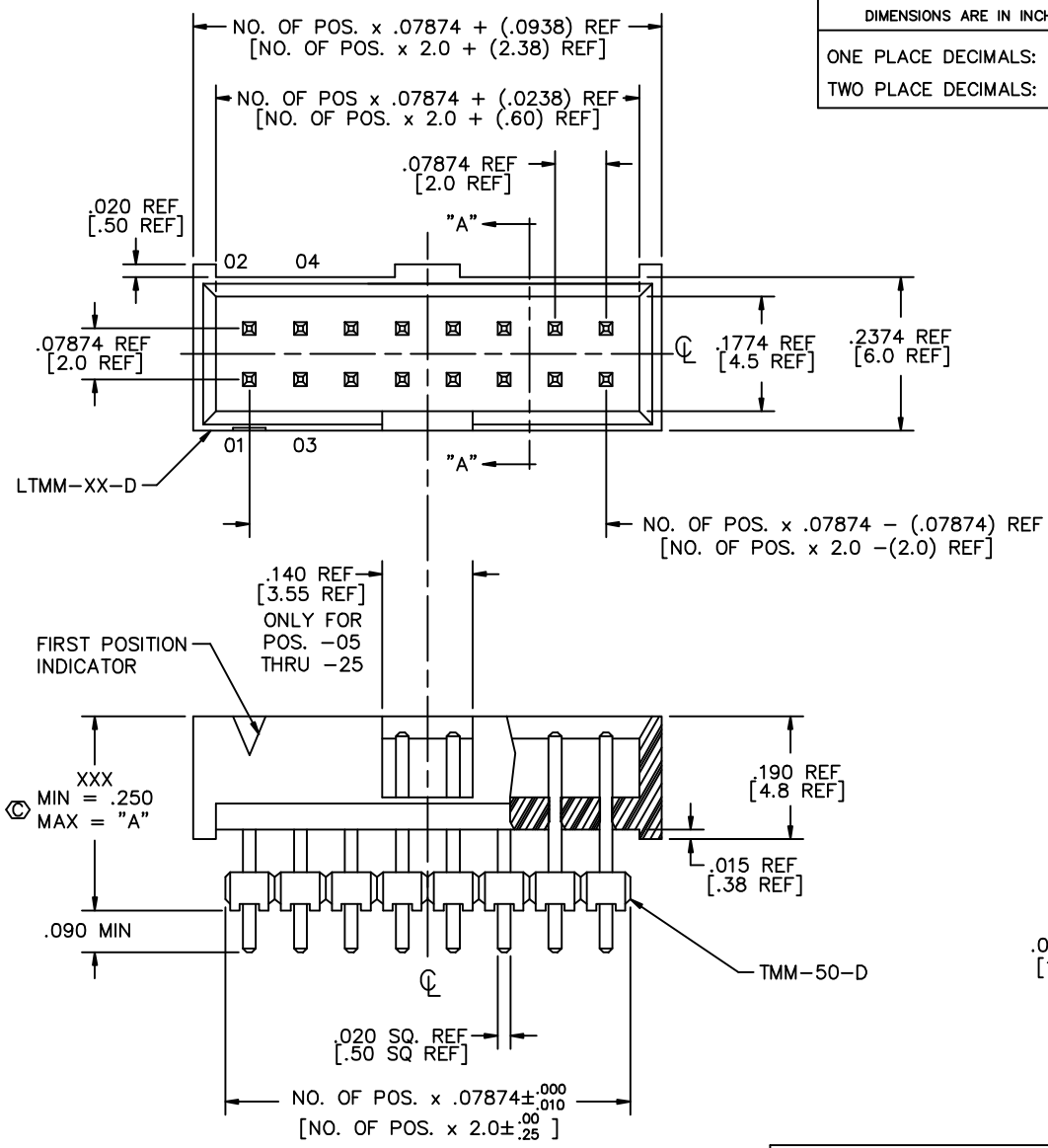


UNLESS OTHERWISE NOTED  
 DIMENSIONS ARE IN INCHES  
 TOLERANCES ARE:  
 ONE PLACE DECIMALS: ± .1  
 TWO PLACE DECIMALS: ± .01  
 THREE PLACE DECIMALS: ± .005  
 FOUR PLACE DECIMALS: ± .0020  
 ANGLES  
 ± 1°

TITLE: ZLTMM ASSEMBLY  
 DWG NO: ZLTMM-1XX-XX-XX-D-XXX-XX  
 SHEET 1 OF 1



ZLTMM-1XX-XX-XX-D-XXX-XX

NO. OF POSITIONS  
 03 THRU 25

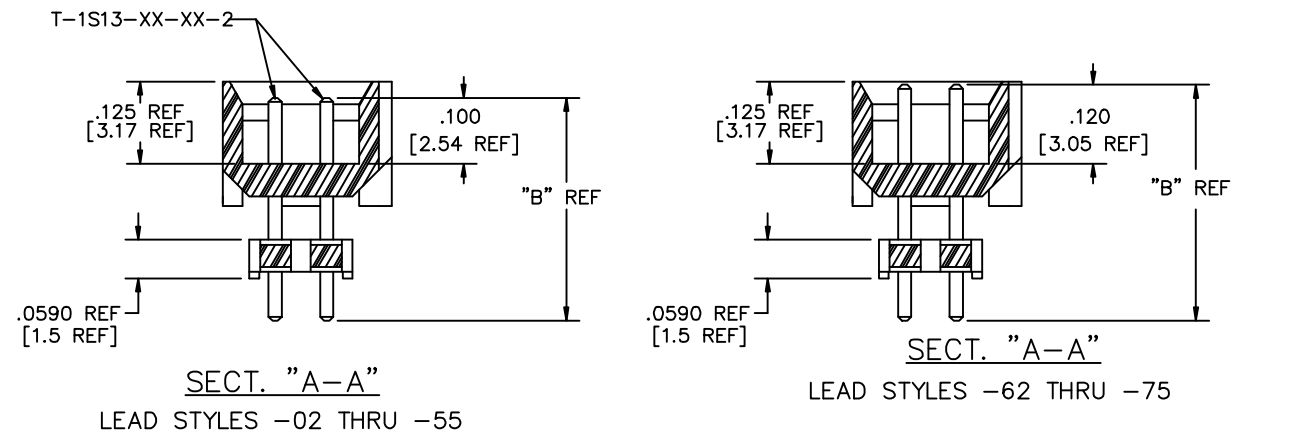
TERMINAL STYLE  
 LEAD STYLES -02 THRU -55:  
 .100 POST HEIGHT, LEAD STYLES  
 -62 THRU -75: .120 POST HEIGHT  
 (SEE TABLE 1)

PLATING SPECIFICATIONS  
 -G: GOLD, 20 Au / 50 Ni MIN ON CONTACT, 3 Au / 50 Ni MIN ON TAIL  
 -T: MATTE TIN CONTACT AND TAIL  
 -S: SELECTIVE, 30 Au / 50 Ni MIN ON CONTACT, MATTE TIN TAIL  
 -H: HEAVY GOLD, 30 Au / 50 Ni MIN ON CONTACT, 3 Au / 50 Ni MIN ON TAIL  
 -TM: MATTE TIN CONTACT AND TAIL  
 -LM: LIGHT SELECTIVE, 15 Au / 50 Ni MIN ON CONTACT, MATTE TIN TAIL  
 -FM: FLASH SELECTIVE, 3 Au / 50 Ni MIN ON CONTACT, MATTE TIN TAIL  
 -SM: SELECTIVE, 30 Au / 50 Ni MIN ON CONTACT, MATTE TIN TAIL  
 -L: LIGHT SELECTIVE, 15 Au / 50 Ni MIN ON CONTACT, MATTE TIN TAIL

POLARIZED OPTION  
 XX = PIN NO. TO BE OMITTED

BODY HEIGHT  
 -XXX  
 MIN = .250  
 MAX = "A" (SEE TABLE 1)

ROW SPECIFICATION  
 -D: DOUBLE



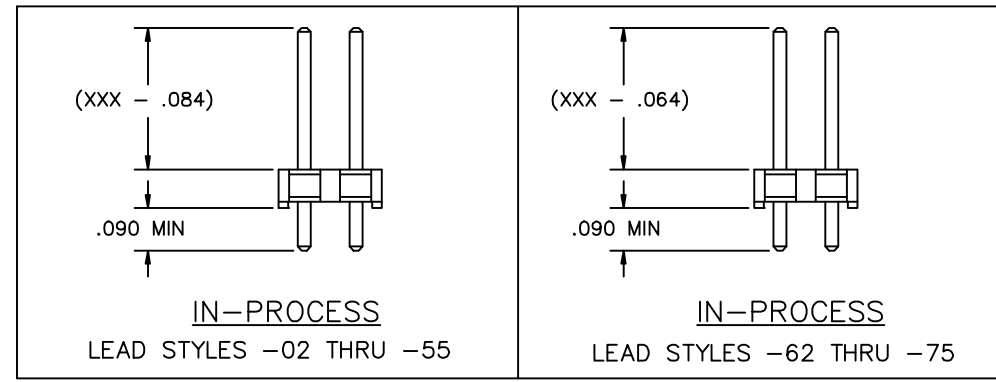
- NOTES:
1. MAX PIN ROTATION IN BODY TO BE 2°.
  2. PUSHOUT FORCE TO BE 1 lb. MIN.
  3. Ⓢ REPRESENTS CRITICAL DIMENSION
  4. ALL DIMS APPEARING IN [ ] ARE IN MILLIMETERS.
  5. INSULATOR MATERIAL: LCP, UL 94 V0

CRITICAL DIMENSION TABLE

ASSEMBLY OPERATION	INSPECTION
FILL LTMM-XX-0	C1

TABLE 1

LEAD STYLE	TERMINAL	"A"	"B"	LEAD STYLE	TERMINAL	"A"	"B"
-02	T-1S13-02-XX-2	.312 [7.92]	.377 [9.58]	-62	T-1S13-05-XX-2	.312 [7.92]	.397 [10.08]
-03	T-1S13-03-XX-2	.470 [11.94]	.535 [13.59]	-63	T-1S13-06-XX-2	.470 [11.94]	.555 [14.10]
-05	T-1S13-05-XX-2	.332 [8.43]	.397 [10.08]	-65	T-1S13-19-XX-2	.328 [8.33]	.413 [10.49]
-06	T-1S13-06-XX-2	.490 [12.45]	.555 [14.1]	-66	T-1S13-09-XX-2	.509 [12.93]	.594 [15.09]
-55	T-1S13-20-XX-2	.258 [6.55]	.323 [8.2]	-69	T-1S13-14-XX-2	.529 [13.44]	.614 [15.60]
-09	T-1S13-09-XX-2	.529 [13.4]	.594 [15.1]	-70	T-1S13-17-XX-2	.608 [15.44]	.693 [17.60]
-10	T-1S13-10-XX-2	.608 [15.4]	.673 [17.1]	-71	T-1S13-12-XX-2	.745 [18.92]	.830 [21.08]
-11	T-1S13-11-XX-2	.686 [17.4]	.751 [19.1]	-72	T-1S13-18-XX-2	.766 [19.45]	.851 [21.62]
-12	T-1S13-12-XX-2	.765 [19.4]	.830 [21.1]	-73	T-1S13-08-XX-2	.391 [9.93]	.476 [12.09]
-13	T-1S13-13-XX-2	.391 [9.9]	.456 [11.6]	-74	T-1S13-10-XX-2	.588 [14.93]	.673 [17.09]
-14	T-1S13-14-XX-2	.549 [13.9]	.614 [15.6]	-75	T-1S13-02-XX-2	.292 [7.42]	.377 [9.58]



PLOT SCALE: 1=.2



520 PARK EAST BLVD. NEW ALBANY, INDIANA 47150  
 PHONE (812) 944-6733 P.O. BOX 1147  
 CODE 55322

**PROPRIETARY NOTE**  
 THIS DOCUMENT CONTAINS INFORMATION CONFIDENTIAL AND PROPRIETARY TO SAMTEC INC. AND SHALL NOT BE REPRODUCED OR TRANSFERRED TO OTHER DOCUMENTS OR DISCLOSED TO OTHERS OR USED FOR ANY PURPOSE OTHER THAN THAT FOR WHICH IT WAS OBTAINED WITHOUT THE EXPRESSED WRITTEN CONSENT OF SAMTEC INC.

MADE BY: BRYANT 7-9-92  
 CHECKED BY: ECKERT  
 ENGINEER APPROVAL: DEM  
 ZLTMM-1XX-XX-XX-D-XXX-XX  
 SHEET 1 OF 1