

FEATURES AND SPECIFICATIONS

Features and Benefits

- Sizes 8 to 50 circuits
- Low profile
- Fully shrouded to protect pins during mating
- 2 polarized end slots

Reference Information

Product Specification: PS-70246
 Mates With: .050" pitch ribbon cable connectors
 Designed In: Inches

Electrical

Current: 2.5A
 Dielectric Withstanding Voltage: 600V AC/1 min.
 Insulation Resistance: 12,000 MΩ min.

Mechanical

Contact Retention: 2 lb min.

Physical

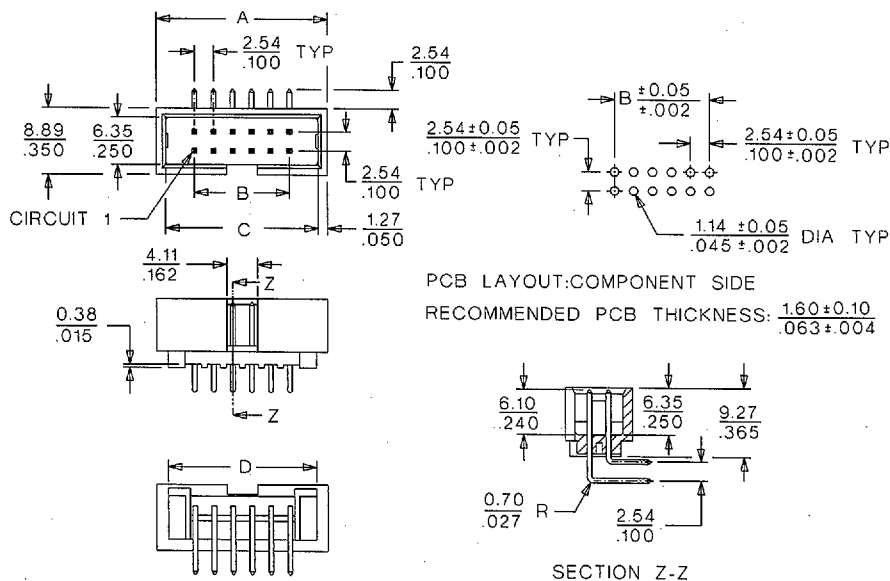
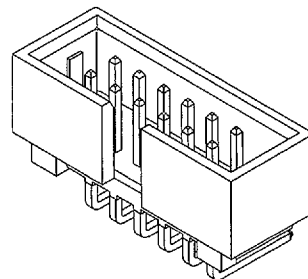
Housing: 4/6 nylon, UL 94V-0
 Contact: Phosphor Bronze
 Plating: 30μ" Gold with 75μ" Tin/Lead solder tails
 Temperature: -55 to +120°C



**2.54mm (.100") Pitch
 C-Grid SL™
 Shrouded Header**

87257

**Dual Row, Low Profile
 Right Angle**



ORDERING INFORMATION AND DIMENSIONS

Circuits	Order No.	Dimension			
		A	B	C	D
8	87257-0842	17.78 (.700)	7.62 (.300)	15.24 (.600)	14.73 (.580)
10	87257-1042	20.32 (.800)	10.16 (.400)	17.78 (.700)	17.27 (.680)
12	87257-1242	22.86 (.900)	12.70 (.500)	20.32 (.800)	19.81 (.780)
14	87257-1442	25.40 (1.000)	15.24 (.600)	22.86 (.900)	22.35 (.880)
16	87257-1642	27.94 (1.100)	17.78 (.700)	25.40 (1.000)	24.89 (.980)
20	87257-2042	33.02 (1.300)	22.86 (.900)	30.48 (1.200)	29.97 (1.180)
24	87257-2442	38.10 (1.500)	27.94 (1.100)	35.56 (1.400)	35.05 (1.380)
26	87257-2642	40.64 (1.600)	30.48 (1.200)	38.10 (1.500)	37.59 (1.480)
30	87257-3042	45.72 (1.800)	35.56 (1.400)	43.18 (1.700)	42.67 (1.680)
34	87257-3442	50.80 (2.000)	40.64 (1.600)	48.26 (1.900)	47.75 (1.880)
40	87257-4042	58.42 (2.300)	48.26 (1.900)	55.88 (2.200)	55.37 (2.180)
44	87257-4442	63.50 (2.500)	53.34 (2.100)	60.96 (2.400)	60.45 (2.380)
50	87257-5042	71.12 (2.800)	60.96 (2.400)	68.58 (2.700)	68.07 (2.680)