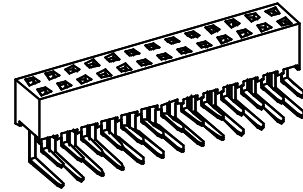


DFR01 2.0mm FEMALE HEADER, RIGHT ANGLE TYPE

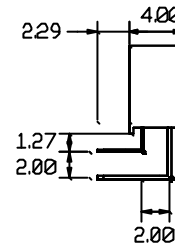
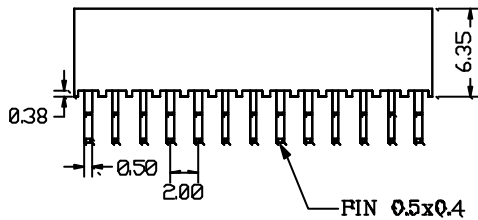
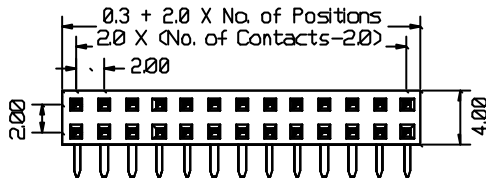
Pitch: 2.0mm * 2.0mm
Profile: 6.35mm

SPECIFICATION

Current Rating: 2 Amps
 Insulation Resistance: 3000 Megohms min
 Contact Resistance: 20 m ohms Max
 Dielectric Withstanding: AC 500 V
 Operating Temperature: -40 ° C to +105° C
 Contact Material: Phosphor Bronze
 Insulator Material: Polyester, UL 94V-0
 © Standard ; LCP



RoHS compliant



HOW TO ORDER

DFR01 - [X] - [X] - [X]

NO. OF CONTACT	CONTACT PLATING	CODE PACKING												
02 TO 50	<table border="1"> <tr> <td>A : Gold Flash</td> <td>H : Gold Flash/Tin</td> </tr> <tr> <td>B : 10u* Gold</td> <td>I : 5u* Gold/Tin</td> </tr> <tr> <td>C : 15u* Gold</td> <td>J : 10u* Gold /Tin</td> </tr> <tr> <td>D : 30u* Gold</td> <td>K : 15u* Gold/Tin</td> </tr> <tr> <td></td> <td>L : 30u* Gold/Tin</td> </tr> <tr> <td colspan="2" style="text-align: center;">© Standard: H</td> </tr> </table>	A : Gold Flash	H : Gold Flash/Tin	B : 10u* Gold	I : 5u* Gold/Tin	C : 15u* Gold	J : 10u* Gold /Tin	D : 30u* Gold	K : 15u* Gold/Tin		L : 30u* Gold/Tin	© Standard: H		A: Tube B: Tray
A : Gold Flash	H : Gold Flash/Tin													
B : 10u* Gold	I : 5u* Gold/Tin													
C : 15u* Gold	J : 10u* Gold /Tin													
D : 30u* Gold	K : 15u* Gold/Tin													
	L : 30u* Gold/Tin													
© Standard: H														