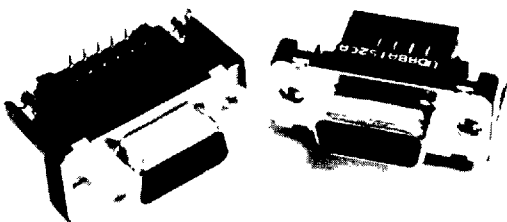


UD Series

P/N Description

UD B B 3 1 - S3 - J A

1 2 3 4 5 6 7 8



Connector Performance:

Electrical Characteristics

Contact Current Rating: 5 Amperes (Size 20 Contact)
 Contact Resistance: 10 MΩ Max
 Operation Temperature: -55°C to +105°C
 Dielectric Withstanding Voltage:
 Non-filtered contacts - 1000 VAC at Sea Level
 Filtered Contacts: (Unless otherwise specified, tested at 2 1/2 Maximum Operating Voltage, w/50mA maximum charging current.)
 Insulation Resistance: 5000 MΩMin

Mechanical Characteristics

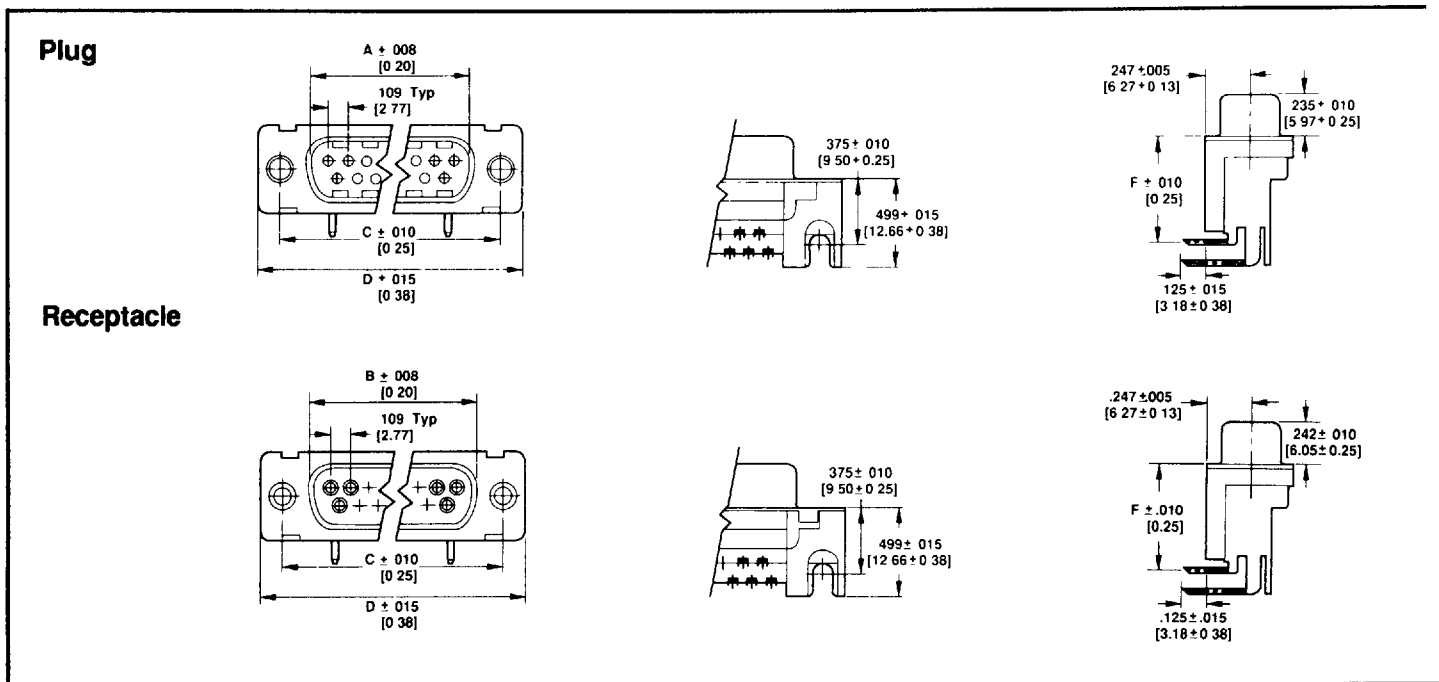
Contact Engagement Force: 12 Oz Max
 Contact Separation Force: .75 Oz Min
 Contact Retention: 9 Lbs Min
 Insert Retention: 40 psi Min

Materials

Contact: Copper Alloy
 Insulator:
 Standard: PBT, Glass-filled, UL 94V-0
 SMD: PPS, Glass-filled, UL 94V-0/5V
 Shell: Steel
 Capacitor:
 ≤470 pf- NPO
 470 pf to 5000 pf - X7R

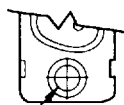
- 1 Series Prefix:**
UD: Filtered D-Sub
- 2 Termination Type**
A: Straight Solder Tail
B: Right Angle Solder Tail
C: Solder Tail
D: PC Board End
- 3 Contact Type & Body Length**
Straight Solder Tail
A: Plug Standard
B: Receptacle Standard
C: Plug Low Profile
D: Receptacle Low Profile
Right Angle
A: Plug .318"/.350"
B: Receptacle .318"/.350"
- 4 No. of Contact Positions**
1: 9 Positions, 20 AWG
2: 15 Positions, 20 AWG
3: 25 Positions, 20 AWG
4: 15 Positions, 22 AWG
- 5 Contact Finish**
1: Gold Flash Plating
2: 20μ" Gold Plating
3: 30μ" Gold Plating
5: 50μ" Gold Plating
6: 10μ" Gold Plating
- 6 Mounting Options**
L2: Clinch Nut
L3: Clinch Nut with Female Screwlocks
S2: Spring Hook
S3: Spring Hook with Female Screwlocks
T3: Clinch Nut (Straight Mount and PC Board End Only)
- 7 Capacitance Value ± 20%**
A: 33 PF
C: 56 PF
D: 82 PF
G: 220 PF
J: 470 PF
L: 1000 PF
N: 1500 PF
Q: 3300 PF
S: Special Capacitance
- 8 Maximum Operating Voltage**
A: 50V
B: 100V
S: Special Operating Voltage

Solder Tail, Right Angle Posted, Body Length .318

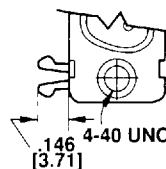


P/N	NO. OF CONTACT POSITIONS	CONTACT TYPE	DIMENSIONS inches (mm)					
			A	B	C	D	E	F
UD-BA1 * - - - - -	9	Plug	0.663	0.642	0.984	1.221	0.614	0.318
UD-BB1 * - - - - -		Receptacle	(16.84)	(16.31)	(24.99)	(31.01)	(15.60)	(8.08)
UD-BA2 * - - - - -	15	Plug	0.991	0.970	1.312	1.539	0.941	0.318
UD-BB2 * - - - - -		Receptacle	(25.17)	(24.64)	(33.32)	(39.40)	(23.90)	(8.08)
UD-BA3 * - - - - -	25	Plug	1.531	1.510	1.852	2.089	1.488	0.318
UD-BB3 * - - - - -		Receptacle	(38.89)	(38.36)	(47.04)	(53.11)	(37.77)	(8.08)

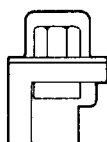
Mounting Styles



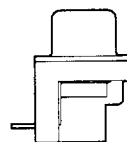
- L2: Clinch Nut



- S2: Spring Hook

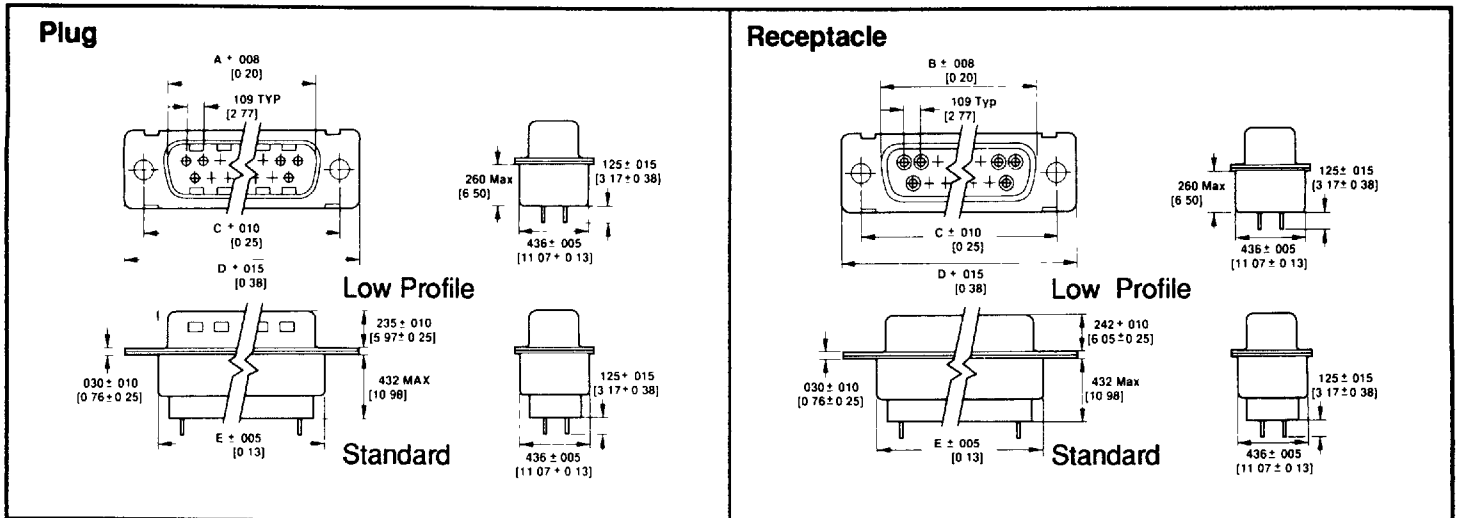


- L3: Clinch Nut with Female Screwlock



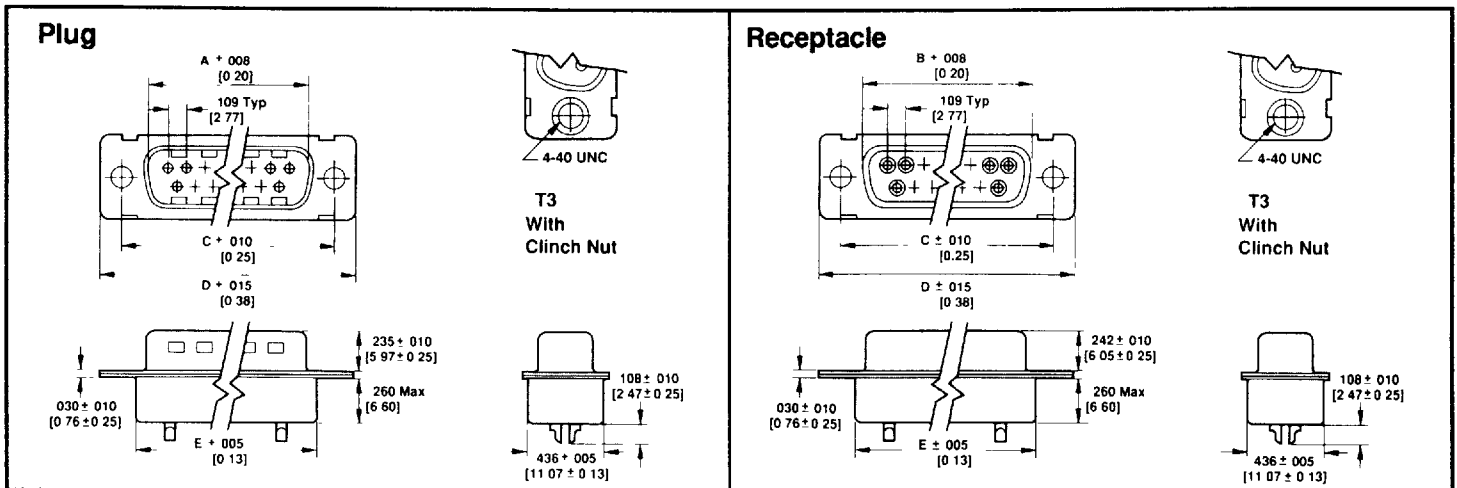
- S3: Spring Hook With Female Screwlock

Solder Tail, Straight, Standard and Low Profile



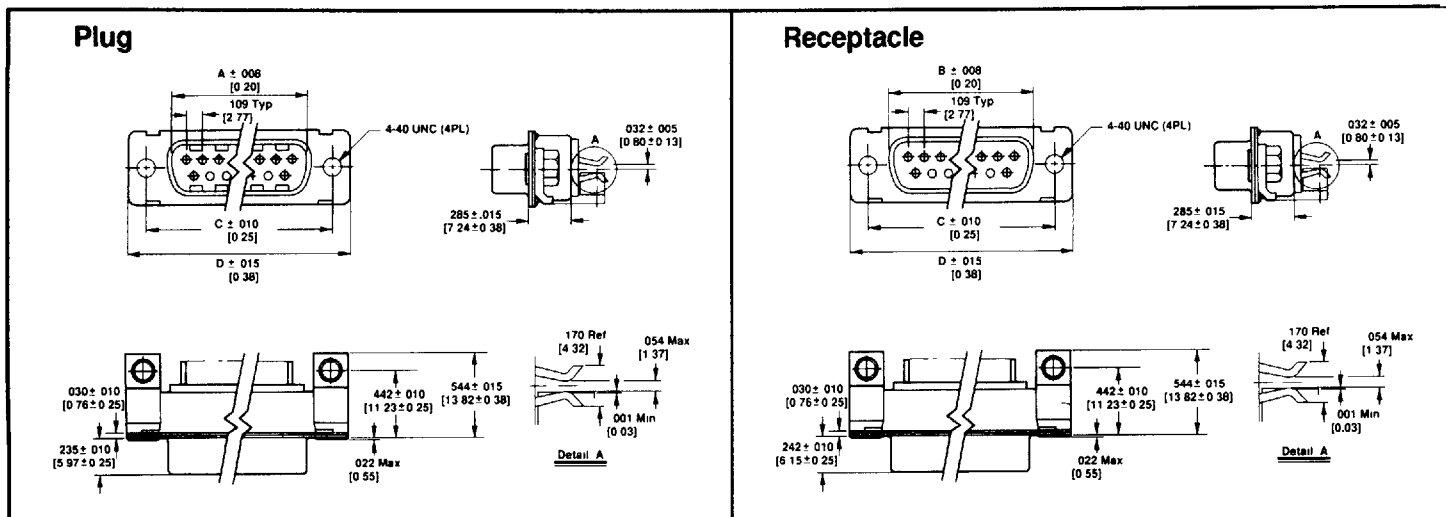
P/N	NO. OF CONTACT POSITIONS		CONTACT TYPE	DIMENSIONS inches (mm)				
				A	B	C	D	E
UD-AA1 * - - - - *	9	Standard	Plug	0.663 (16.84)	0.642 (16.31)	0.984 (24.99)	1.208 (30.68)	0.756 (19.21)
UD-AB1 * - - - - *			Receptacle					
UD-AC1 * - - - - *		Low Profile	Plug					
UD-AD1 * - - - - *			Receptacle					
UD-AA3 * - - - - *	25	Standard	Plug	1.531 (38.89)	1.510 (38.36)	1.852 (47.04)	2.083 (52.91)	1.628 (41.36)
UD-AB3 * - - - - *			Receptacle					
UD-AC3 * - - - - *		Low Profile	Plug					
UD-AD3 * - - - - *			Receptacle					

Solder Cup Contact Size 20



P/N	NO. OF CONTACT POSITIONS	CONTACT TYPE	DIMENSIONS inches (mm)				
			A	B	C	D	E
UD-CA1 * - - - - *	9	Plug	0.663 (16.84)	0.642 (16.31)	0.984 (24.99)	1.208 (30.68)	0.756 (19.21)
UD-CB1 * - - - - *		Receptacle					
UD-CA3 * - - - - *	25	Plug	1.531 (38.89)	1.510 (38.36)	1.852 (47.04)	2.083 (52.91)	1.628 (41.36)
UD-CB3 * - - - - *		Receptacle					

PCB End, Contact Size No. 20



P/N	NO. OF CONTACT POSITIONS	CONTACT TYPE	DIMENSIONS inches (mm)			
			A	B	C	D
UD-GA1 * - * - * - *	9	Plug	0.663	0.642	0.984	1.208
UD-GB1 * - * - * - *		Receptacle	(16.84)	(16.31)	(24.99)	(30.68)
UD-GA2 * - * - * - *	15	Plug	0.991	0.970	1.312	1.536
UD-GB2 * - * - * - *		Receptacle	(25.17)	(24.64)	(33.32)	(39.01)
UD-GA3 * - * - * - *	25	Plug	1.531	1.510	1.852	2.083
UD-GB3 * - * - * - *		Receptacle	(38.89)	(38.36)	(47.04)	(52.91)

PC Board Mounting Specifications

