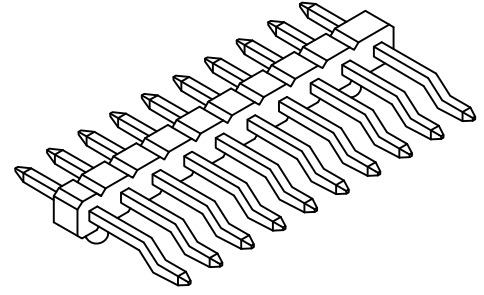
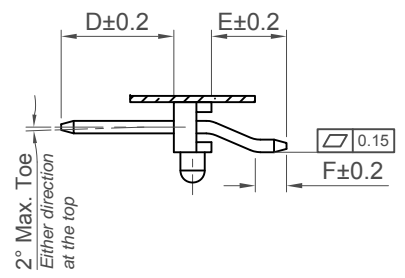
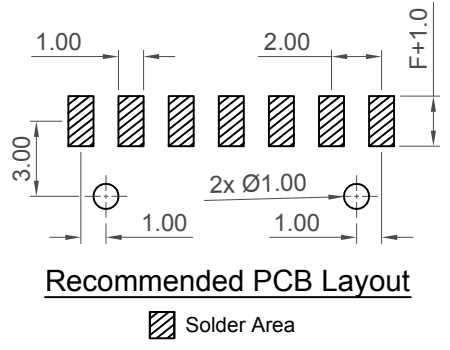
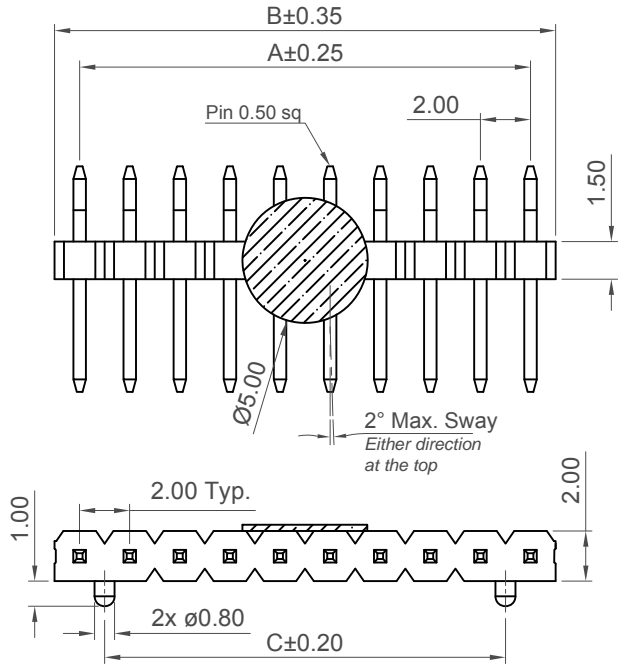


H
G
F
E
D
C
B
A



CONTACTS	DIMENSIONS		
	A	B	C
3	4.0	6.0	2.0
4	6.0	8.0	4.0
5	8.0	10.0	6.0
6	10.0	12.0	8.0
7	12.0	14.0	10.0
8	14.0	16.0	12.0
9	16.0	18.0	14.0
10	18.0	20.0	16.0
11	20.0	22.0	18.0
12	22.0	24.0	20.0
13	24.0	26.0	22.0
14	26.0	28.0	24.0
15	28.0	30.0	26.0
16	30.0	32.0	28.0
17	32.0	34.0	30.0
18	34.0	36.0	32.0
19	36.0	38.0	34.0
20	38.0	40.0	36.0
21	40.0	42.0	38.0
22	42.0	44.0	40.0
23	44.0	46.0	42.0
24	46.0	48.0	44.0
25	48.0	50.0	46.0
26	50.0	52.0	48.0
27	52.0	54.0	50.0
28	54.0	56.0	52.0
29	56.0	58.0	54.0
30	58.0	60.0	56.0
31	60.0	62.0	58.0
32	62.0	64.0	60.0
33	64.0	66.0	62.0
34	66.0	68.0	64.0
35	68.0	70.0	66.0
36	70.0	72.0	68.0
37	72.0	74.0	70.0
38	74.0	76.0	72.0
39	76.0	78.0	74.0
40	78.0	80.0	76.0

Specifications 规格

Current Rating 电流额定值: 2.0 Amp
 Insulation Resistance 绝缘电阻值: 1000 MΩ min.
 Contact Resistance 接触电阻值: 20 mΩ max.
 Dielectric Withstanding 耐电压: 500V AC
 Operating Temperature 工作温度:
 Gold Plating: -40°C to +125°C
 Tin Plating: -40°C to +105°C
 Contact Material 端子物料: Copper Alloy
 Insulator Material 绝缘体物料:
 Standard 标准物料: Polyamide, Nylon 6T, UL 94V-0
 Options 可选物料: Polyester, LCP, UL 94V-0
 Soldering Process 可焊性:
 Nylon 6T (Standard 标准物料) -
 IR Reflow 回流焊: 260°C for 10 sec.
 Wave 波峰焊: 230°C for 5-10 sec.
 Manual Solder 人工焊接: 350°C for 3-5 sec
 LCP (Option 可选物料) -
 IR Reflow 回流焊: 260°C for 10 sec.
 Wave 波峰焊: 250°C for 5-10 sec.
 Manual Solder 人工焊接: 350°C for 3-5 sec

Mates with 配套之母座 (Subject to pin length 在端子长度适合的条件下):
 BF070 BF085 BF090

Ordering Grid

BF036 - XX - X - XXXX - XXXX - XXXX - X - X

No. of Contacts: 03 to 40

Contact Plating:
 A = Gold Flash All Over (Standard)
 B = Selective Gold Flash Contact Area/ Tin On Tail
 C = Tin All Over
 G = 10µ" Gold Contact Area/Tin On Tail
 I = 30µ" Gold Contact Area/Tin On Tail

Request Samples and Quotation

Packing Options:
 C = Tape and Reel with Film (Standard)
 D = Tube
 Insulator Material:
 N = Nylon 6T (Standard)
 L = LCP

Dimension F (1/100mm) (Pin Curve to End of Pin)
 0127 = 1.27mm (Standard)
 Or specify custom 'Pin Curve to End of Pin' length
 eg 0250 = 2.50mm

Dimension D (1/100mm) (Post Length)
 0400 = 4.00mm (Standard)
 Or specify custom Post Length
 eg 0250 = 2.50mm

Dimension E (1/100mm) (Insulator to End of Pin)
 0300 = 3.00mm (Standard)
 Or specify custom 'Insulator to End of Pin' length
 eg 0250 = 2.50mm

Part Number		Product Description	
BF036		2.00mm Pitch Pin Header	
Drawing Date		Single Row, SMT, Horizontal with Locating Peg	
19th May 2010			
By	AJO	Tolerances (Except as Noted)	Units:
Detail		Length	Metric (mm)
Revision	C2	X. ± 0.30	RoHS COMPLIANT 2011/RE/IEU Deca-BDE
Date	10/03/15	X.X ± 0.25	© This drawing is confidential and copyright of Global Connector Technology, Ltd (GCT). This drawing must not be copied or disclosed without written consent. E & OE
		X.XX ± 0.15	Not to Scale
		X.XXX ± 0.10	Drawn By SA
		Angle	Sheet No. 1/1
		X.° ± 5°	
		X.X° ± 3°	
		X.XX° ± 2°	
		X.XXX° ± 1°	

GCT
 Global Connector Technology
 www.gct.co