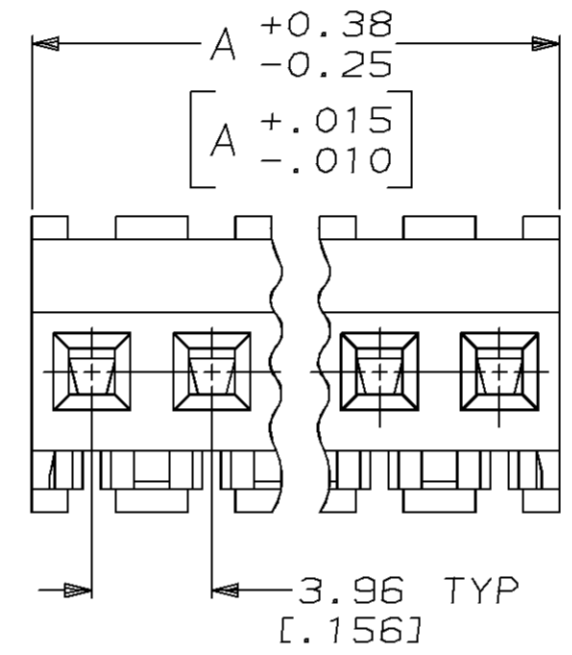
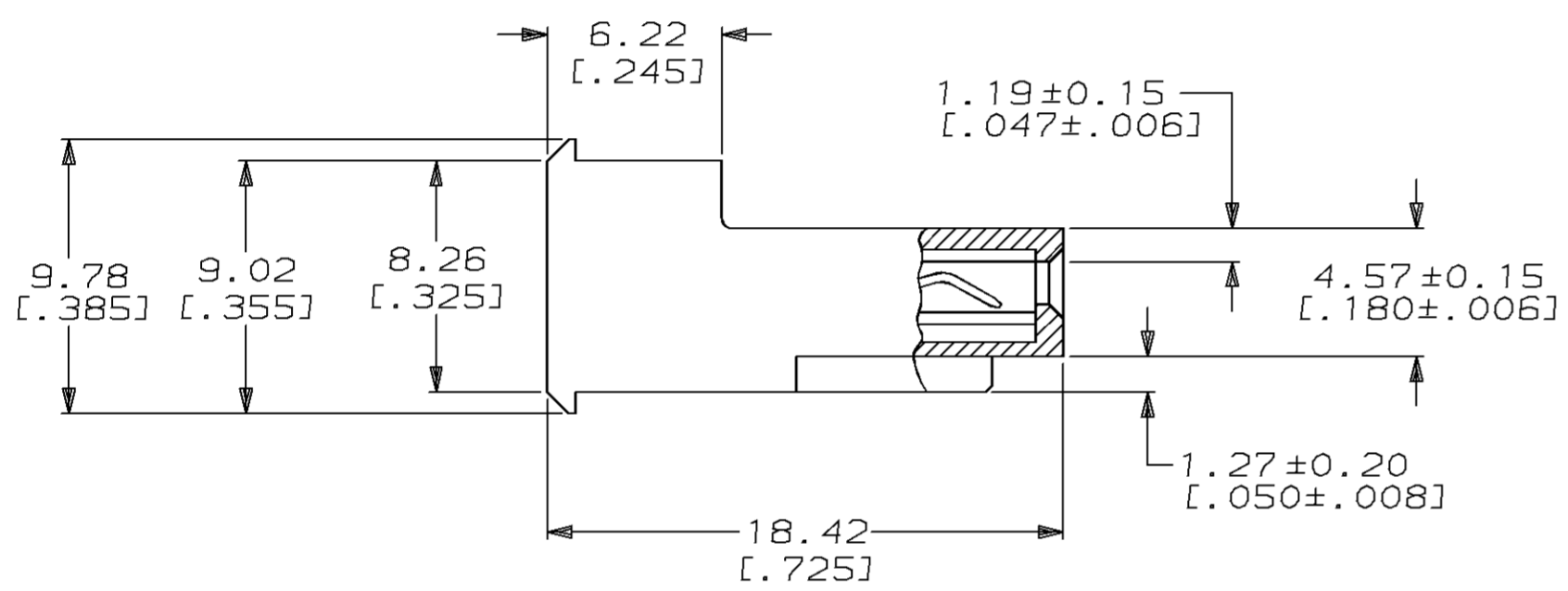
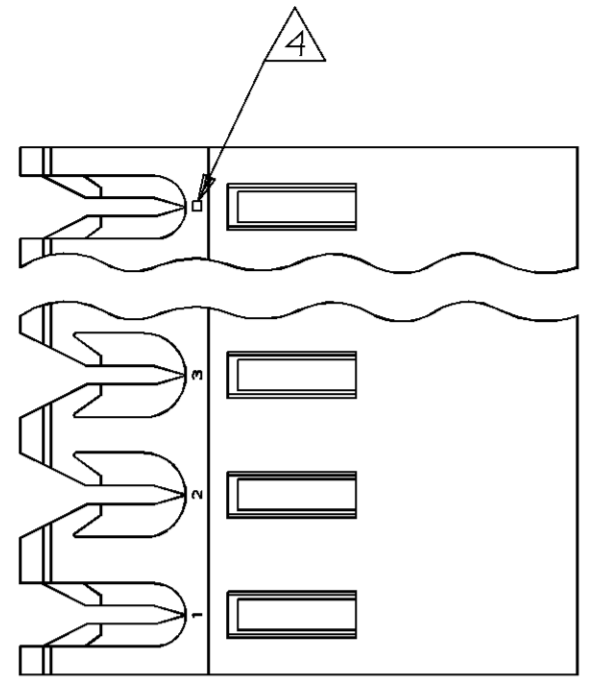


THIS DRAWING IS UNPUBLISHED. RELEASED FOR PUBLICATION, 19 .  
 © COPYRIGHT 19 BY AMP INCORPORATED. ALL INTERNATIONAL RIGHTS RESERVED.

LOC	DIST	P	F	ZONE	LTR	REVISIONS	DATE	APPD
CM	54				J	REACT -2 THRU -24 AND REV PER EC 0730-0242-95	3-12-96	BL RS



95.10	[3.744]	24	2-641233-4
91.14	[3.588]	23	2-641233-3
87.17	[3.432]	22	2-641233-2
83.21	[3.276]	21	2-641233-1
79.25	[3.120]	20	2-641233-0
75.29	[2.964]	19	1-641233-9
71.32	[2.808]	18	1-641233-8
67.36	[2.652]	17	1-641233-7
63.40	[2.496]	16	1-641233-6
59.44	[2.340]	15	1-641233-5
55.47	[2.184]	14	1-641233-4
51.51	[2.028]	13	1-641233-3
47.55	[1.872]	12	1-641233-2
43.59	[1.716]	11	1-641233-1
39.62	[1.560]	10	1-641233-0
35.66	[1.404]	9	641233-9
31.70	[1.248]	8	641233-8
27.74	[1.092]	7	641233-7
23.77	[.936]	6	641233-6
19.81	[.780]	5	641233-5
15.85	[.624]	4	641233-4
11.89	[.468]	3	641233-3
7.92	[.312]	2	641233-2

- 1 MATERIAL: CONNECTOR - NYLON UL94V-2 (YELLOW).  
 CONTACTS - 0.30 [.012] THICK COPPER ALLOY  
 (0.00076 [.000030] GOLD)
2. CONTACTS ACCEPT 20 AWG WIRE WITH 2.41 [.095] MAX INSULATION DIAMETER.
3. CONTACTS MUST ACCEPT 1.14±0.03 [.045±.001] SQUARE POST AND REMAIN LOCKED IN POSITION.
- 4 IDENTIFICATION NUMBER FOR LAST CIRCUIT MAY NOT APPEAR ON ALL ASSEMBLIES.
5. DIMENSIONS IN BRACKETS ARE IN INCHES.
6. HOUSING FEATURES ARE: FEED-THRU WITHOUT LOCKING RAMP.

		DIM A	NO OF CIRCUITS	PART NO
DO NOT SCALE PRINT. UNLESS SPECIFIED DIMENSIONS IN mm [INCHES] TOLERANCES ON : 2 PLC DEC ± - 3 PLC DEC ± 0.13 [.005] ANGLES ± -	DR 3-12-96 B. LEWIS CHK 3-12-96 R. SWING APPD 3-12-96 D. CLARK APPD 3-12-96 D. CLARK	<b>AMP</b> AMP Incorporated Harrisburg, PA 17105-3608 NAME MTA-156 CONNECTOR ASSEMBLY, 20 AWG, STANDARD		
MATERIAL	PRODUCT SPEC 108-1051			
FINISH	APPLICATION SPEC 114-1020	SIZE C	CAGE CODE 00779	DRAWING NO 641233
	WEIGHT -	SCALE 4:1		SHEET 1 OF 1

