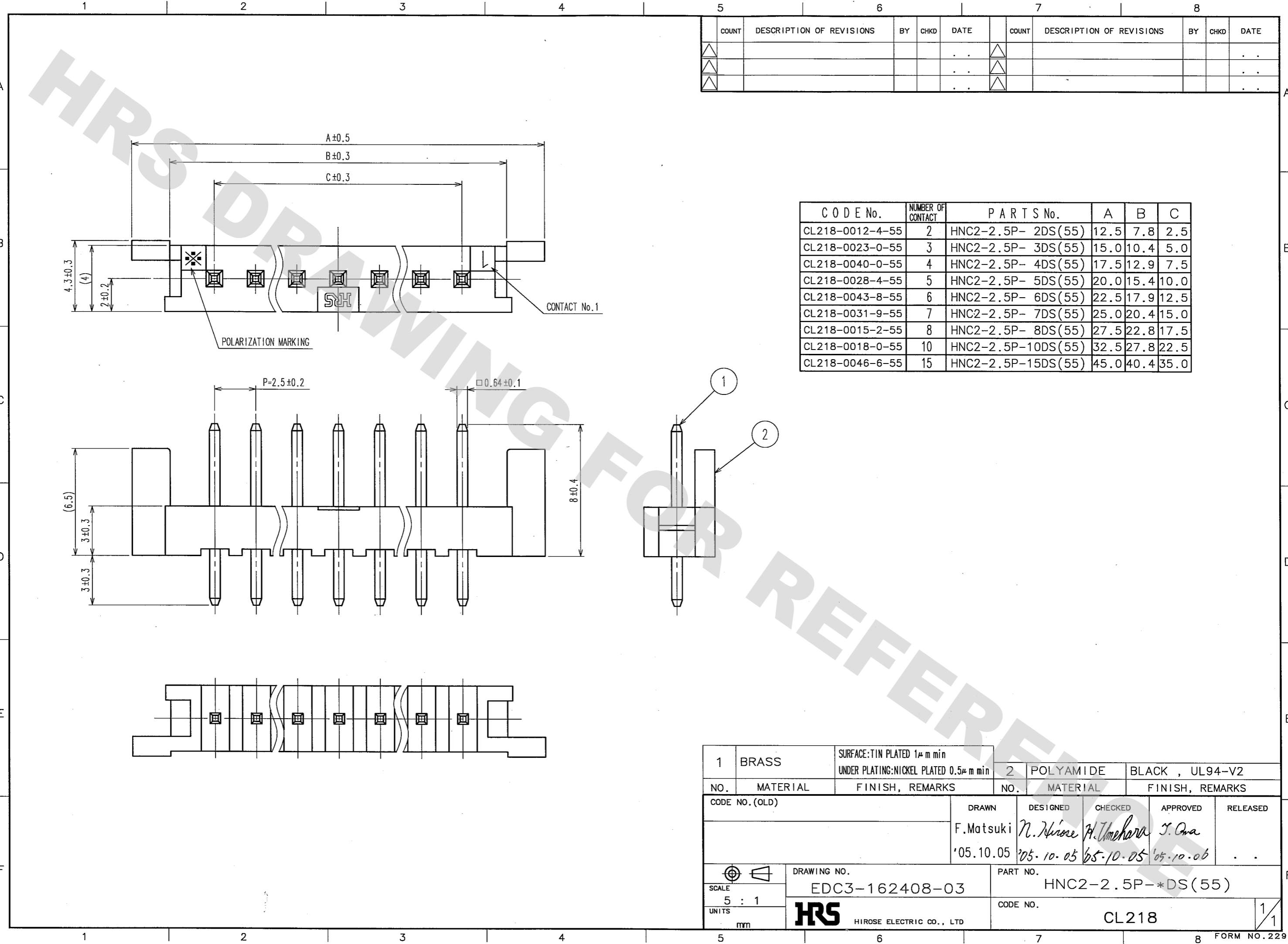


DRAWING FOR REFERENCE: This is subject to change without notice
08/11/2012

TO



COUNT	DESCRIPTION OF REVISIONS	BY	CHKD	DATE	COUNT	DESCRIPTION OF REVISIONS	BY	CHKD	DATE
△				..	△				..
△				..	△				..
△				..	△				..

CODE No.	NUMBER OF CONTACT	PARTS No.	A	B	C
CL218-0012-4-55	2	HNC2-2.5P- 2DS(55)	12.5	7.8	2.5
CL218-0023-0-55	3	HNC2-2.5P- 3DS(55)	15.0	10.4	5.0
CL218-0040-0-55	4	HNC2-2.5P- 4DS(55)	17.5	12.9	7.5
CL218-0028-4-55	5	HNC2-2.5P- 5DS(55)	20.0	15.4	10.0
CL218-0043-8-55	6	HNC2-2.5P- 6DS(55)	22.5	17.9	12.5
CL218-0031-9-55	7	HNC2-2.5P- 7DS(55)	25.0	20.4	15.0
CL218-0015-2-55	8	HNC2-2.5P- 8DS(55)	27.5	22.8	17.5
CL218-0018-0-55	10	HNC2-2.5P-10DS(55)	32.5	27.8	22.5
CL218-0046-6-55	15	HNC2-2.5P-15DS(55)	45.0	40.4	35.0

1	BRASS	SURFACE:TIN PLATED $1\mu\text{m min}$ UNDER PLATING:NICKEL PLATED $0.5\mu\text{m min}$	2	POLYAMIDE	BLACK , UL94-V2		
NO.	MATERIAL	FINISH, REMARKS	NO.	MATERIAL	FINISH, REMARKS		
CODE NO. (OLD)			DRAWN	DESIGNED	CHECKED	APPROVED	RELEASED
			F.Matsuki '05.10.05	N. Niino '05.10.05	H. Umehara '05.10.05	J. Ona '05.10.06	..
DRAWING NO. EDC3-162408-03			PART NO. HNC2-2.5P-*DS(55)				
SCALE 5 : 1			CODE NO. CL218				
UNITS mm			HIROSE ELECTRIC CO., LTD				