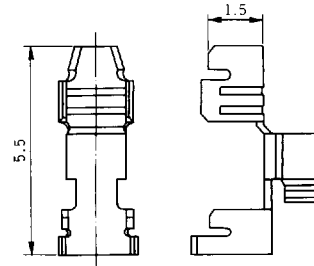


# CRIMP CONNECTOR

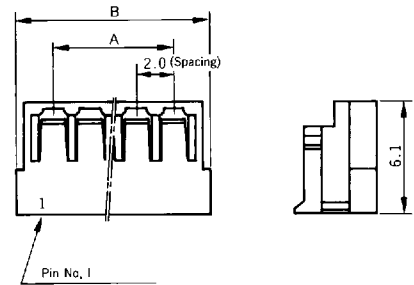
## ● Terminal

Part No.	Applicable Electrical Wire Size(AWG)	Electrical Wire Sheath Dia.(mm)	Material	Plating	No. of Terminal/Reel
W-T0213-11#01	22~30	φ 1.5~0.8	Phosphor Bronze	Tin (Reflow Treatment)	15000



## ● Housing

No. of Pins	Part No.	A	B
2	W-A2202-IN#51	2.0	5.8
3	W-A2203-IN#51	4.0	7.8
4	W-A2204-IN#51	6.0	9.8
5	W-A2205-IN#51	8.0	11.8
6	W-A2206-IN#51	10.0	13.8
7	W-A2207-IN#51	12.0	15.8
8	W-A2208-IN#51	14.0	17.8
9	W-A2209-IN#51	16.0	19.8
10	W-A2210-IN#51	18.0	21.8
11	W-A2211-IN#51	20.0	23.8
12	W-A2212-IN#51	22.0	25.8
13	W-A2213-IN#51	24.0	27.8
14	W-A2214-IN#51	26.0	29.8
15	W-A2215-IN#51	28.0	31.8



## ■ Material and Plating

- Housing: Polyamide (Natural color) 94V-0

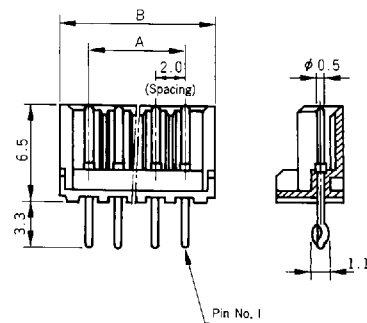
## ● Plug

No. of Pins	Straight Type	Right-Angle Type	A	B
2	W-P0802#51	W-P0852#51	2.0	6.0
3	W-P0803#51	W-P0853#51	4.0	8.0
4	W-P0804#51	W-P0854#51	6.0	10.0
5	W-P0805#51	W-P0855#51	8.0	12.0
6	W-P0806#51	W-P0856#51	10.0	14.0
7	W-P0807#51	W-P0857#51	12.0	16.0
8	W-P0808#51	W-P0858#51	14.0	18.0
9	W-P0809#51	W-P0859#51	16.0	20.0
10	W-P0810#51	W-P0860#51	18.0	22.0
11	W-P0811#51	W-P0861#51	20.0	24.0
12	W-P0812#51	W-P0862#51	22.0	26.0
13	W-P0813#51	W-P0863#51	24.0	28.0
14	W-P0814#51	W-P0864#51	26.0	30.0
15	W-P0815#51	W-P0865#51	28.0	32.0

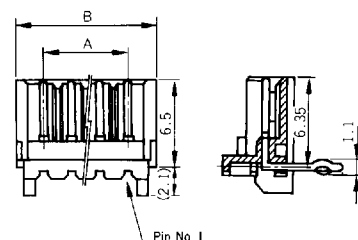
## ■ Material and Plating

- Housing: Polyamide (Natural color) 94V-0
- Plug pin: Brass Tin-lead plating

### Straight Type



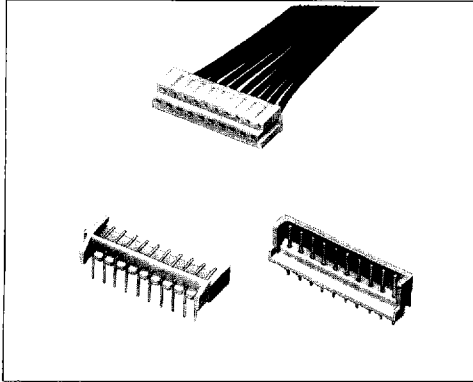
### Right-Angle Type



## CRIMP CONNECTOR

# MP-2 Series 2.0mm Spacing

CRIMP CONNECTOR



### ■ Features

1. MP-2 series connectors are crimp type connectors featuring a compact design with pins set at 2.0mm spacing. Socket and plug connections for this model measure only 6.9mm high and 4.5mm thick.
2. Connectors in this series are available in two basic plug-in designs (straight or right-angle) and come in an assortment of fourteen different plug types ranging from 2P to 15P.
3. A lock mechanism is utilized for the socket and plug housings to ensure firm connection and to prevent improper plug insertion.

### ■ Specifications

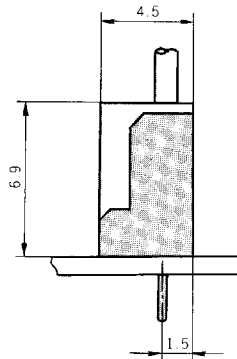
1. Rating: 1A 125V AC/DC
2. Contact Resistance: 20mΩ max.
3. Insulation Resistance: 1000MΩ min. at 500V DC
4. Breakdown Voltage: 500V AC for one minute
5. Operating Temperature: -25°C to +85°C
6. Applicable Wire Size: AWG22 to 30 (Sheath dia.  $\phi$ 0.8 to  $\phi$ 1.5mm)
7. Applicable PC Board Thickness: 1.6mm

### ■ NOTE

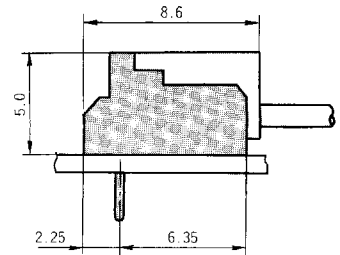
Contact the company if additional specifications are desired.

### ■ Connection Diagram

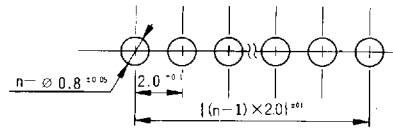
Straight Type



Right-Angle Type



### ■ Diagram for PC Board Mount Holes



### ■ Structural Configuration Diagram

