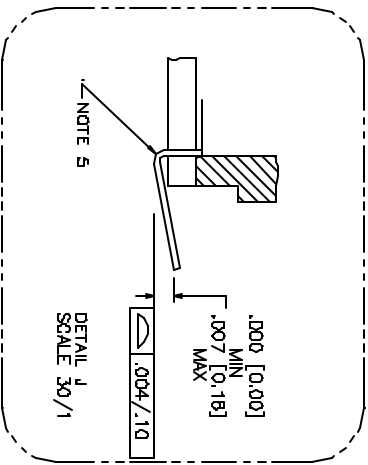
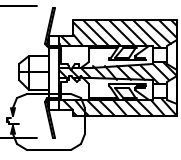
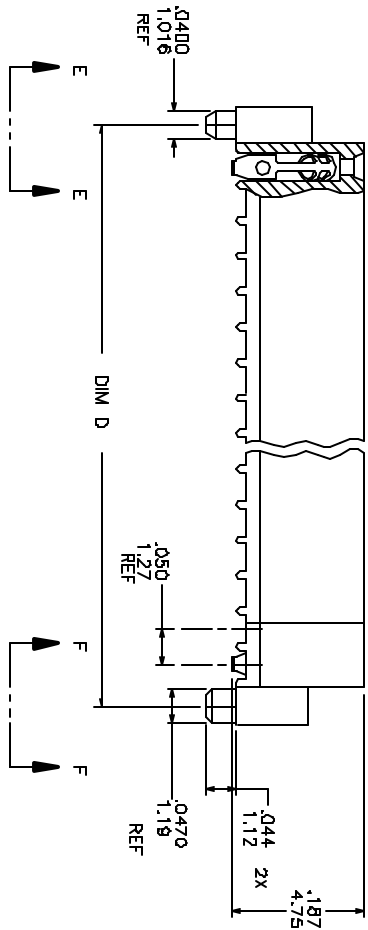
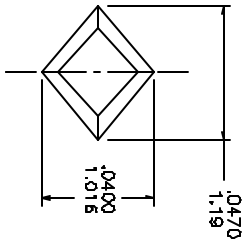
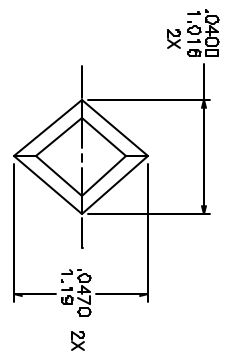
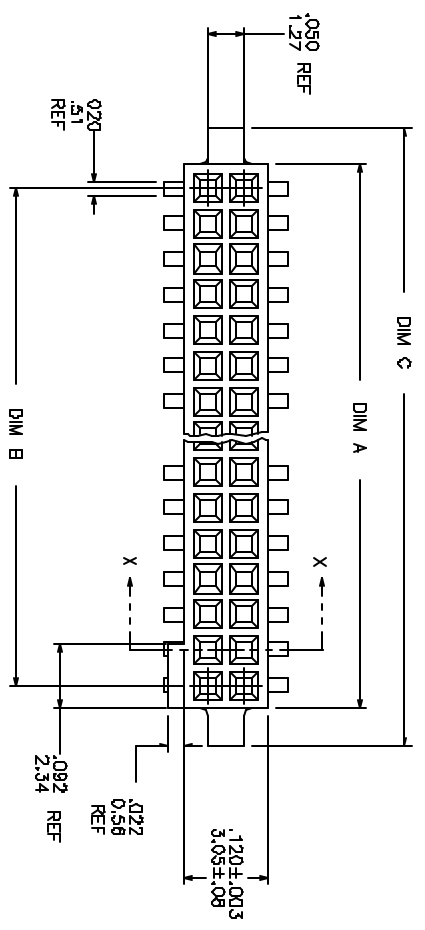




PRODUCT NUMBER  
SEE TABLE



NOTE 5  
SCALE 30/1

mat'l. code	part no.	date	tolerances unless otherwise specified	CUSTOMER COPY	title	product family	code
H	V80708	EPK 4/17/98	.XX ±.01 / .XX ±.3	projection	.050/1.27 CC V.C.C. SMT.	RIBCAGE	1 of 3
J	V80882	EPK 6/9/98	.XXX ±.005 / .XX ±.13	projection	W/POL. HOLD DOWN	RIBCAGE	1 of 3
K	V81807	EPK 1/19/99	Ø ±.2	INCH/MM			
L	V02780	DLW 12/14/00	Ø ±.2	INCH/MM			
M	V10884	DLW 3/9/01	Ø ±.2	INCH/MM			
N	V11874	GRG 7/12/01	Ø ±.2	INCH/MM			

ACAD

cage code  
22526

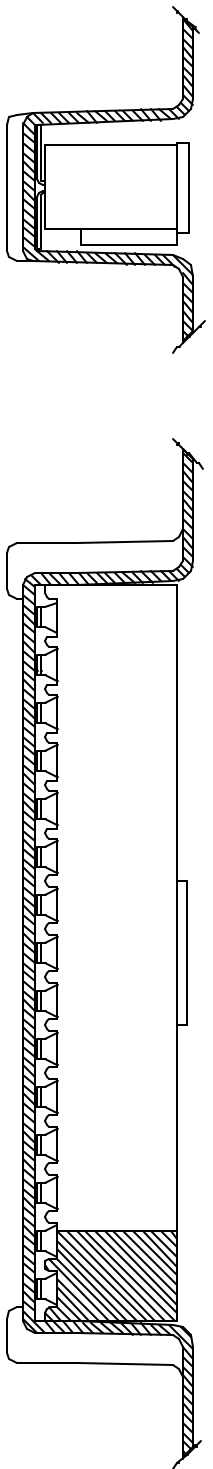
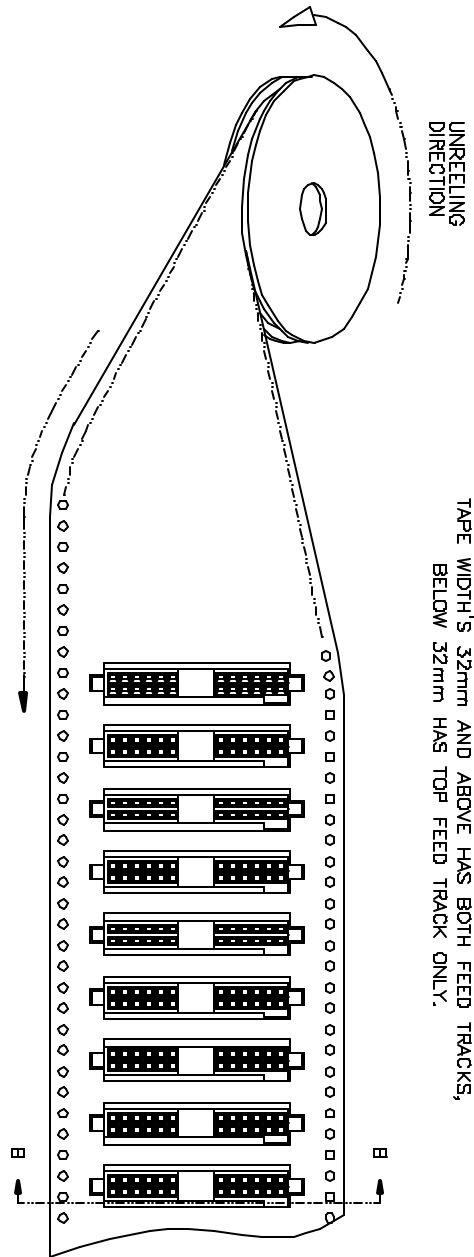


PRODUCT NUMBER  
SEE TABLE

1 | 2

3

4



SECTION B-B

mat'l. code		tolerances unless otherwise specified		CUSTOMER COPY		FCI Electronics		www.fciconsult.com	
itr	ser. no	dr	date	linear	angles	projection	title	product family	code
L				.XX ±.01 / .XX ±.3	0° ±2°	1st angle	.050/1.27 CC V.C.C. SMT, W/POL. HOLD DOWN	RIBCAGE	
				.XXX ±.005 / .XXX ±.13		2nd angle			
				.XXX ±.005 / .XXX ±.05		3rd angle			
				E. KRÖPPLING/3/12/99		4th angle			
				D. WHITING 3/12/99		5th angle			
				D. WHITING 3/12/99		6th angle			
				D. WHITING 3/12/99		7th angle			
				D. WHITING 3/12/99		8th angle			
sheet	revision					scale			sheet
index	sheet					3:1	A		3 of

1 | 2

3

4

ACCAD

page code  
22526