

**SPECIFICATIONS**

**Mechanical**

**Contact Retention Force:** 0.91g min.

**Electrical**

**Current Rating:** 3.0A per pin min.

**Dielectric Withstanding Voltage:** 500V AC

**Insulation Resistance:** 1000MW min

**Physical**

**Housing:** Nylon 6.6, Glass Filled, UL94V-0

**Contact:** Copper Alloy

**Plating:** See "ORDERING INFORMATION"

**Solder Pad:** Copper Alloy

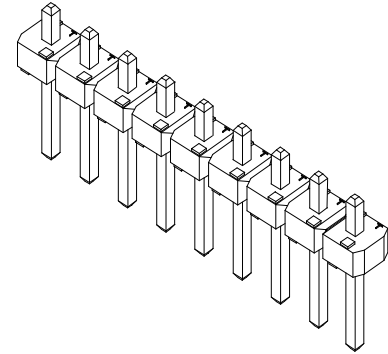
**Operating Temperature:** -40 to +105

**BreakaWay Header**

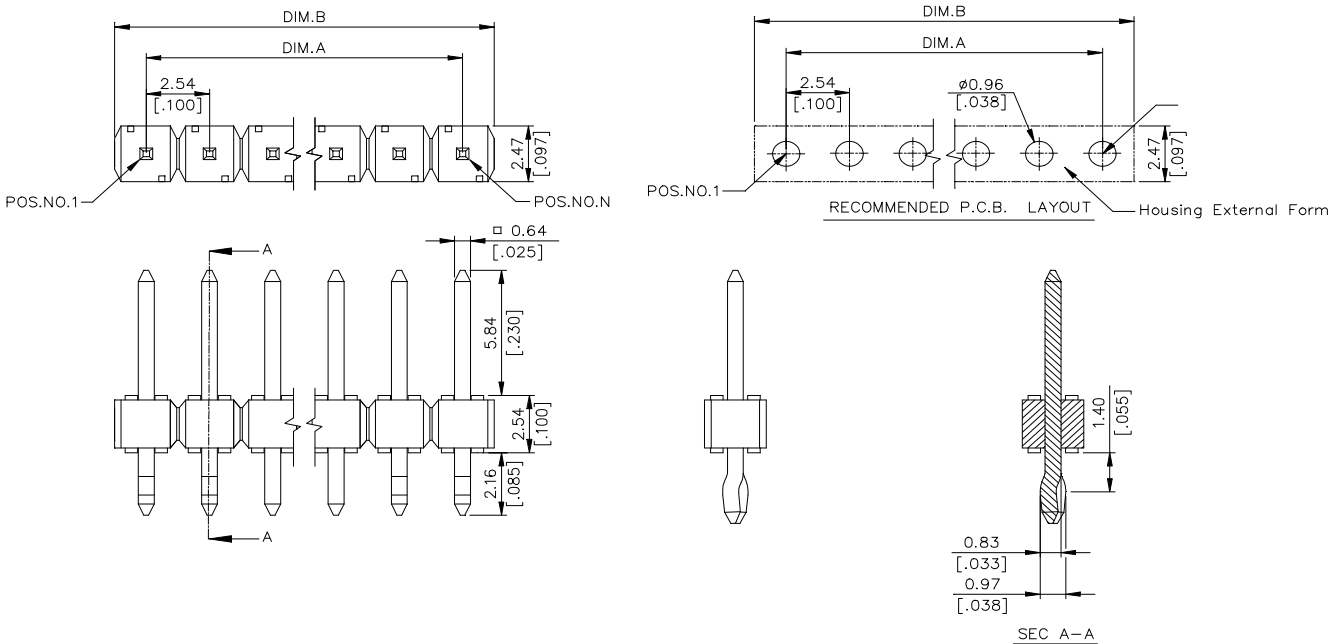
**HB19 Series**

**T/H Type**

**2.54mm [.100"] Pitch**



**DRAWING**



**ORDERING INFORMATION**

**PRODUCT NO.:** HB 19 \* \* \* - \* \* \* \*

Breakaway Header Series  
 Termination & Contact Type  
 No. Of Pos  
 1=1 Pos  
 2=2 Pos  
 .  
 .  
 40=40 Pos  
 Optional For Plating  
 See DWG. 307-0000-210

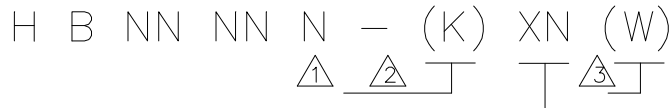
Position Omitted  
 See DWG. 307-0000-210  
 Optional For Housing Color  
 See DWG. 307-0000-210  
 Optional For Kinks  
 See DWG. 307-0000-210

**ORDERING INFORMATION**

HB1920*—****	20	45.72 [1.900]	50.55 [1.990]
HB1919*—****	19	45.72 [1.800]	48.01 [1.890]
HB1918*—****	18	43.18 [1.700]	45.47 [1.790]
HB1917*—****	17	40.64 [1.600]	42.93 [1.690]
HB1916*—****	16	38.10 [1.500]	40.39 [1.590]
HB1915*—****	15	35.46 [1.400]	37.85 [1.490]
HB1914*—****	14	33.02 [1.300]	35.31 [1.390]
HB1913*—****	13	30.48 [1.200]	32.77 [1.290]
HB1912*—****	12	27.94 [1.100]	30.23 [1.190]
HB1911*—****	11	25.40 [1.000]	27.69 [1.090]
HB1910*—****	10	22.86 [.900]	25.15 [.990]
HB1909*—****	9	20.32 [.800]	22.61 [.890]
HB1908*—****	8	17.78 [.700]	20.07 [.790]
HB1907*—****	7	15.24 [.600]	17.53 [.690]
HB1906*—****	6	12.70 [.500]	14.99 [.590]
HB1905*—****	5	10.16 [.400]	12.45 [.490]
HB1904*—****	4	7.62 [.300]	9.91 [.390]
HB1903*—****	3	5.08 [.200]	7.37 [.290]
HB1902*—****	2	2.54 [.100]	4.83 [.190]
HB1901*—****	1	0.00 [0.00]	2.29 [.090]
P/N	POS.	DIM. A	DIM. B

HB1940*—****	40	99.06 [3.900]	101.35 [3.990]
HB1939*—****	39	96.52 [3.800]	98.81 [3.890]
HB1938*—****	38	93.98 [3.700]	96.27 [3.790]
HB1937*—****	37	91.44 [3.600]	93.73 [3.690]
HB1936*—****	36	88.90 [3.500]	91.19 [3.590]
HB1935*—****	35	86.36 [3.400]	88.65 [3.490]
HB1934*—****	34	83.82 [3.300]	86.11 [3.390]
HB1933*—****	33	81.28 [3.200]	83.57 [3.290]
HB1932*—****	32	78.74 [3.100]	81.03 [3.190]
HB1931*—****	31	76.20 [3.000]	25.15 [3.090]
HB1930*—****	30	73.66 [2.900]	37.85 [2.990]
HB1929*—****	29	71.12 [2.800]	35.31 [2.890]
HB1928*—****	28	68.58 [2.700]	32.77 [2.790]
HB1927*—****	27	66.04 [2.600]	30.23 [2.690]
HB1926*—****	26	63.50 [2.500]	27.69 [2.590]
HB1925*—****	25	58.42 [2.400]	63.25 [2.490]
HB1924*—****	24	55.88 [2.300]	60.71 [2.390]
HB1923*—****	23	53.34 [2.200]	58.17 [2.290]
HB1922*—****	22	50.80 [2.100]	55.63 [2.190]
HB1921*—****	21	48.26 [2.000]	53.09 [2.090]
P/N	POS.	DIM. A	DIM. B

307-0000-210



CODE	DESCRIPTION
K0	ALL PINS WITH KINK.
K3	SAME AS REMARK $\Delta$
B8	5th & 12th & 14th & 25th PINS OMITTED.
B9	2nd & 4th & 7th PINS OMITTED.
D0	
D1	2nd & FINAL 2nd PINS OMITTED.
D2	20th POSITION OMITTED.
D3	4th & 21st POSITION OMITTED.
D4	8th POSITION OMITTED.
D5	3rd POSITION OMITTED.
D6	2nd, 4th, 6th & 10th POSITION OMITTED.
D7	4th, 8th, 12th, 16th, 20th, & 24th POSITION OMITTED.
D8	3rd,4th,6th,9th,13th & 15th POSITION OMITTED.
D9	3rd & 4th POSITION OMITTED.
P0	4th POSITION OMITTED.
P1	6th POSITION OMITTED.
P2	9th & 10th POSITION OMITTED.
P3	2nd POSITION OMITTED.
P4	5th POSITION OMITTED.
P5	10th POSITION OMITTED.
P6	2nd, 6th, 9th & 11th POSITION OMITTED.
P7	3rd, 5th, 8th POSITION OMITTED.
P8	7th POSITION OMITTED.
P9	9th POSITION OMITTED.
T0	2nd, 9th, 11th, 14th, 17th, 20th, 21st & 23rd POSI. OMITTED.
T1	1st & END PINS WITH KINK, 2nd POSITION OMITTED.
T2	ALL PINS WITH KINK, 3rd & 4th POSITION OMITTED.
T3	ALL PINS WITH KINK, 5th & 6th POSITION OMITTED.
T4	2nd, 9th, 11th, 14th, 17th, 20th & 22nd POSITION OMITTED.
T5	3rd, 4th, 13rd & 14th POSITION OMITTED.
T6	2nd, 3rd, 5th, 9th, 11th, 14th, 17th, 20th & 22nd POSITION OMITTED.
T7	3rd, 4th, 6th, 9th, 13th, 15th & 16th POSITION OMITTED.
T8	2nd & 3rd POSITION OMITTED.
T9	3rd, 5th, 9th, 13th & 15th POSITION OMITTED.
U0	4th, 8th & 12th POSITION OMITTED.
U1	3rd & 5th POSITION OMITTED.
U2	3rd, 5th & 9th POSITION OMITTED.
U3	3rd, 4th, 6th, 9th & 15th POSITION OMITTED.
U4	3rd, 7th, 9th, 11th, 14th, 16th, 20th & 22nd POSITION OMITTED.
U5	3rd, 5th, 9th, 13th & 16th POSITION OMITTED.
U6	2nd, 9th, 11th, 17th, 20th, 22nd & 24th POSITION OMITTED.
U7	5th, 7th, 12th, 14th, 17th, 19th, 21st & 25th POSITION OMITTED.
U8	2nd, 5th, 8th & 10th POSITION OMITTED.
U9	4th & 8th POSITION OMITTED.
L0	3rd, 5th, 9th, 13th & 15th POSITION OMITTED.
L1	5th, 9th & 12th POSITION OMITTED.
L2	2nd, 9th, 10th, 11th, 12th, 15th & 17 POS. OMITTED.
L3	2nd, 5th & 17th POSITION OMITTED.
L4	5th, 7th, 11th, 13th, 16th, 20th & 24th POS. OMITTED.
L5	4th, 9th, 16th & 19th POS. OMITTED.
L6	4th & 9th POSITION OMITTED.
L8	5th, 7th & 15th POSITION OMITTED.
L9	12th POSITION OMITTED.

Remark:

- $\Delta$  Optional For Plating  
 0=100u" Tin/Lead over All  
 1=Gold Flash over All  
 7=15u" Gold on Contact Area  
 C=3u" Gold on Contact Area  
 G=Gold Flash on Contact Area  
 E=100u" min. Tin with Lead Free  
 "RoHS COMPLAINCE"  
 F=Gold Flash with Lead Free  
 "RoHS COMPLAINCE"  
 V=15u" Gold with Lead Free  
 "RoHS COMPLAINCE"  
 U=Gold flash on Contact Area  
 with Lead Free "RoHS COMPLAINCE"
- $\Delta$  Optional for Kinks.  
 K = The 1st, 2nd, N &  
 N-1, 4 Pieces of  
 terminals are kinked.
- $\Delta$  Optional for housing Color.  
 None: Standard product  
 (color black)  
 W: color Ivory