

**SPECIFICATIONS**

**Friction Header Connector**

**Mechanical**

**Contact Retention Force:** 1.36 KGF Min  
**Durability:** 500 Cycles

**HF11 Series**

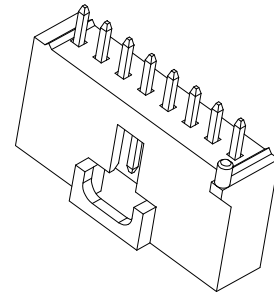
**Friction T/H Type**  
**2.54mm [.100"] Pitch**

**Electrical**

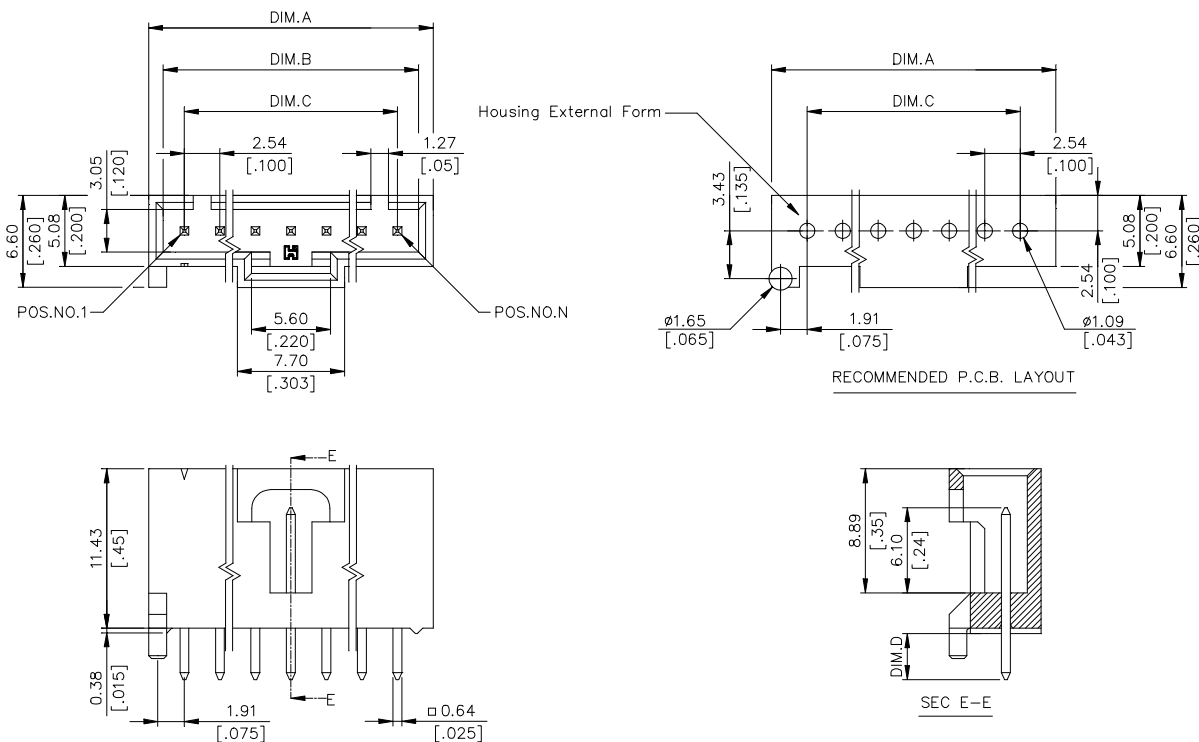
**Voltage Rating:** 600V  
**Current Rating:** 3.0A per pin min  
**Contact Resistance:** 30mW max  
**Insulation Resistance:** 1000MW min

**Physical**

**Housing:** Thermoplastic, Glass Filled, UL94V-0 Rating  
**Contact:** Copper Alloy  
**Plating:** See "ORDERING INFORMATION"  
**Operating Temperature:** -50 to +105



**DRAWING**



**ORDERING INFORMATION**

**PRODUCT NO.:** HF11\*\*\*-\*\*

Header \_\_\_\_\_  
 High Friction Header \_\_\_\_\_  
 Termination & Contact Type \_\_\_\_\_  
 No. Of Pos \_\_\_\_\_  
 2=2 Pos  
 3=3 Pos  
 4=4 Pos  
 5=5 Pos  
 6=6 Pos  
 8=8 Pos  
 9=9 Pos  
 10=10 Pos

Optional For Modification Code  
 NONE: NO GUIDE POST, DIM. D=3.30[.130]  
 P1: ONE GUIDE POST, DIM. D=3.30[.130]  
 C1: ONE GUIDE POST, DIM. D=2.30[.091]  
 Optional For Housing Color  
 N : HOUSING COLOR IVORY  
 G : HOUSING COLOR GREEN  
 U : HOUSING COLOR BLUE  
 Y : HOUSING COLOR YELLOW  
 A : HOUSING COLOR GRAY  
 Optional For Plating

E=100u" min. Tin with Lead free "RoHS Compliance"

HF1110*-***	10	27.99 [1.102]	25.91 [1.020]	22.86 [.900]	
HF1109*-***	9	25.45 [1.002]	23.37 [.920]	20.32 [.800]	
HF1108*-***	8	22.91 [.902]	20.83 [.820]	17.78 [.700]	
HF1106*-***	6	17.83 [.702]	15.75 [.620]	12.70 [.500]	
HF1105*-***	5	15.29 [.602]	13.21 [.520]	10.16 [.400]	
HF1104*-***	4	12.75 [.502]	10.67 [.420]	7.62 [.300]	
HF1103*-***	3	10.21 [.402]	8.13 [.320]	5.08 [.200]	
HF1102*-***	2	7.62 [.300]	5.55 [.219]	2.54 [.100]	
P/N		POS.	DIM. A	DIM. B	DIM. C