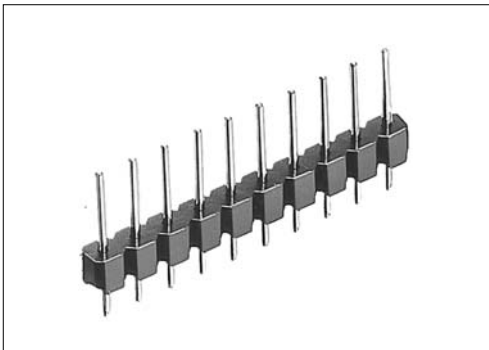


**Straight DIP type male connector for PCBs**  
**(Round contact type)**  
**FFC-( ) (T ) CM( ) ( )**

For PCBs

Straight DIP

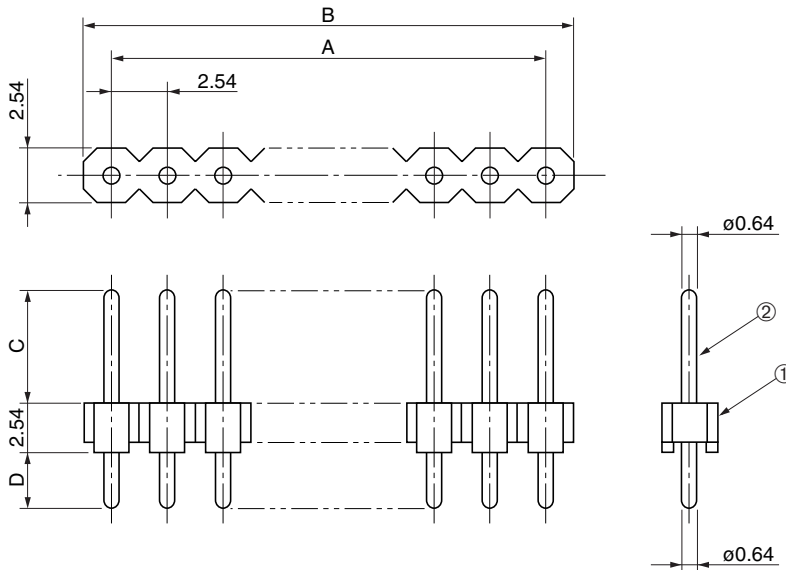


● Configuration of product Part No.

**FFC- ( ) (T ) CM ( ) ( )**

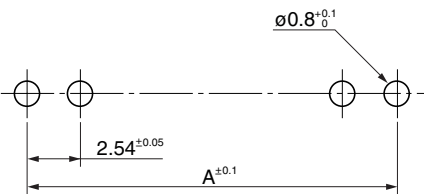
①      ②      ③      ④      ⑤      ⑥

- ① Series name
- ② No. of contacts: 1–52
- ③ Length of contact  
Blank: Standard  
T, T1–T12 (Refer to the following dimension table.)
- ④ Type of contact  
CM: 0.64 mm diameter contacts, single row type
- ⑤ Contact plating  
1: Gold plate  
2: Solder plate
- ⑥ Insulator color  
Blank: Blue  
B : Black



● Dimensions

No. of contacts	A	B	No. of contacts	A	B
1	–	2.54	27	66.04	68.58
2	2.54	5.08	28	68.58	71.12
3	5.08	7.62	29	71.12	73.66
4	7.62	10.16	30	73.66	76.20
5	10.16	12.70	31	76.20	78.74
6	12.70	15.24	32	78.74	81.28
7	15.24	17.78	33	81.28	83.82
8	17.78	20.32	34	83.82	86.36
9	20.32	22.86	35	86.36	88.90
10	22.86	25.40	36	88.90	91.44
11	25.40	27.94	37	91.44	93.98
12	27.94	30.48	38	93.98	96.52
13	30.48	33.02	39	96.52	99.06
14	33.02	35.56	40	99.06	101.60
15	35.56	38.10	41	101.60	104.14
16	38.10	40.64	42	104.14	106.68
17	40.64	43.18	43	106.68	109.22
18	43.18	45.72	44	109.22	111.76
19	45.72	48.26	45	111.76	114.30
20	48.26	50.80	46	114.30	116.84
21	50.80	53.34	47	116.84	119.38
22	53.34	55.88	48	119.38	121.92
23	55.88	58.42	49	121.92	124.46
24	58.42	60.96	50	124.46	127.00
25	60.96	63.50	51	127.00	129.54
26	63.50	66.04	52	129.54	132.08



PCB layout for reference only

● Components

①	Insulator
②	Contacts

Part No.	C	D
FFC-(1~52)CM( ) ( )	6	2.5
FFC-(1~52)TCM( ) ( )	4.4	(2.5)
FFC-(1~52)T1CM( ) ( )	5	(2.5)
FFC-(1~52)T2CM( ) ( )	4.66	6
FFC-(1~52)T3CM( ) ( )	7.41	–
FFC-(1~52)T4CM( ) ( )	5.46	(5)
FFC-(1~52)T5CM( ) ( )	–	6.96
FFC-(1~52)T6CM( ) ( )	7.7	(2.76)
FFC-(1~52)T7CM( ) ( )	1.5	(6)
FFC-(1~52)T8CM( ) ( )	1.95	(1.91)
FFC-(1~52)T9CM( ) ( )	2.9	2.86
FFC-(1~52)T10CM( ) ( )	2.5	6
FFC-(1~52)T11CM( ) ( )	5.46	3.04
FFC-(1~52)T12CM( ) ( )		0.3

Mating connectors: DIC series of female connectors