

INTRODUCTION:

Adam Tech BHR Series Box Headers are mounted to PC boards and mate with IDC female socket connectors. This series offers the advantage of a low profile, compact version with reduced size for improved utilization of PC board space and board-to-board clearances. They are ideal for connecting panel-to-board or one subsystem to another with flat cable assemblies. Features include center polarization slots, various plating options and custom pin lengths.

FEATURES:

- Shroud prevents physical, electrical and chemical damage to pins
- Molded-in standoffs enable easy cleaning
- Center polarization slot to ensure proper orientation
- Available in 10 - 64 positions
- Custom pin lengths available

MATING OPTIONS:

Mates with Adam Tech FCS Series and all industry standard IDC .100" x .100" socket connectors

SPECIFICATIONS:

Material:

Insulator: Polybutylene Terephthalate (PBT), glass reinforced thermoplastic, rated UL 94V-0

Insulator color: Black

Optional color: Gray

Contacts: Phosphor Bronze

Plating options:

U = 5 µin gold nom. (optional 30 µin) to MIL-G-45204, Type II, Grade C over 50 µin. nickel underplate to QQ-N-290, Class 2, Grade C

SG = 5 µin nom. gold on mating length to MIL-G-45204, Type II, Grade C, 100 µin. tin-lead to MIL-P-81738 on solder tails

T = 100 µin tin-lead to MIL-P-81738, Type 1 over 50 µin copper underplate to MIL-C-14550

Electrical:

Operation voltage: 250 VAC max

Current rating: 3 Amps max

Contact resistance: 20 mΩ max

Insulation resistance: 5000 MΩ min @ 1000 VDC between adjacent contacts (75°F and 50% R.H.)

Dielectric withstanding voltage: 1000 VAC min rms (sea level)

Mechanical:

Contact Insertion force: Refer to FCS Series

Contact withdrawal force: Refer to FCS Series

Mating durability: 750 cycles min

Environmental:

Operating Temperature: -65°C to +125°C

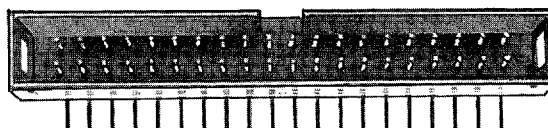
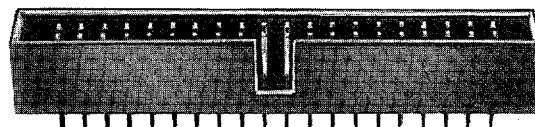
PACKAGING:

Anti-static plastic trays

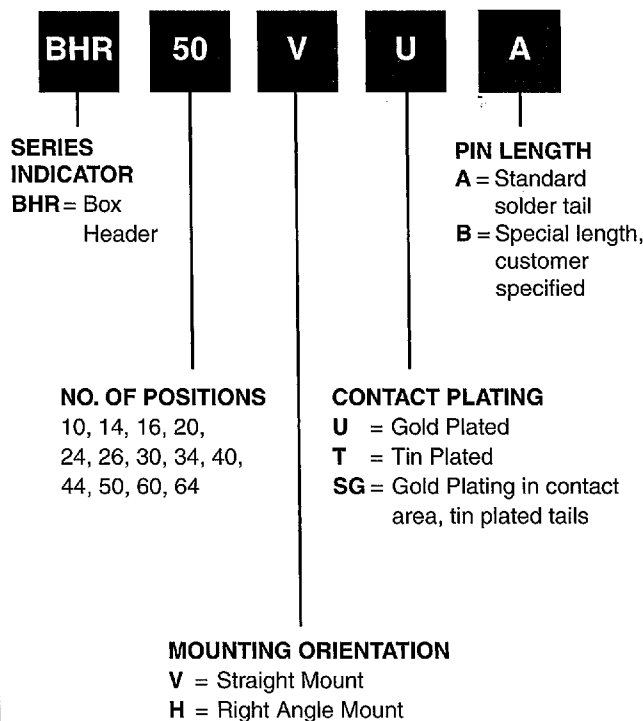
APPROVALS AND CERTIFICATIONS:

Recognized under the component program of Underwriters Laboratories, Inc. No. E167232

Certified by Canadian Standards Association No. LR75112



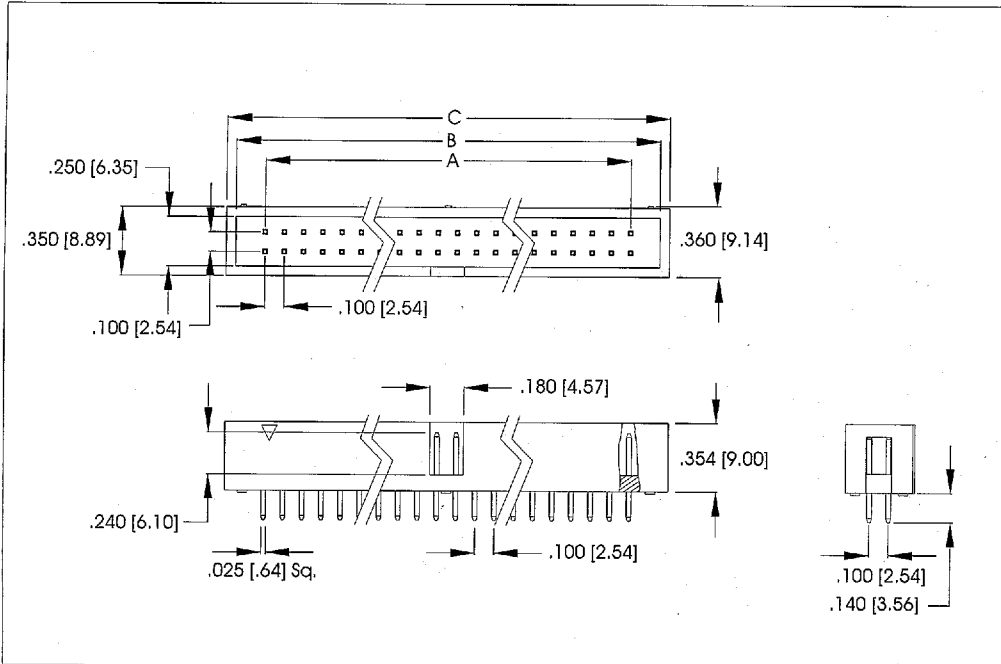
ORDERING INFORMATION



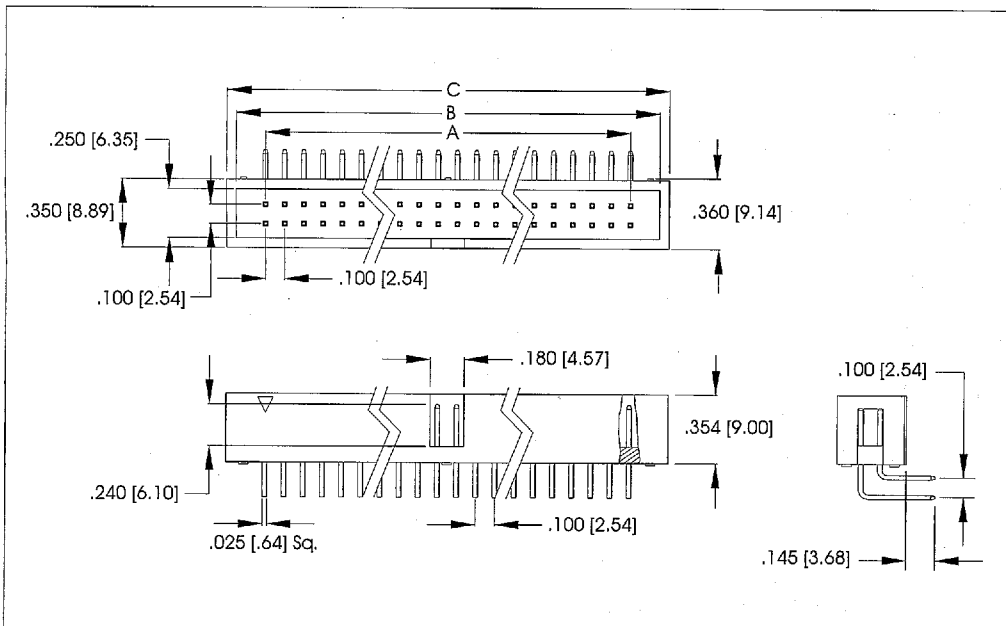
OPTIONS:

Add as suffix to basic part number
30 = 30 µin gold plating in contact area
GY = Gray color insulator

STRAIGHT MOUNT



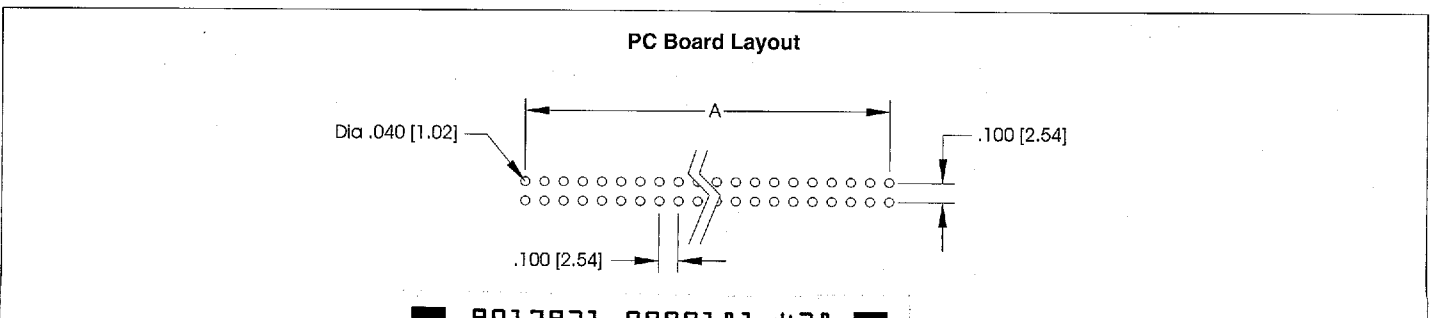
RIGHT ANGLE MOUNT



Unit: Inch / mm

Dimensional:			
POSITION	A	B	C
10	.400 (10.16)	.720 (18.29)	.805 (20.45)
14	.600 (15.24)	.920 (23.37)	1.005 (25.53)
16	.700 (17.78)	1.020 (25.91)	1.105 (28.07)
20	.900 (22.86)	1.220 (31.00)	1.305 (33.15)
24	1.100 (27.94)	1.420 (36.07)	1.505 (38.23)
26	1.200 (30.48)	1.520 (38.61)	1.605 (40.77)
30	1.400 (35.56)	1.720 (43.69)	1.805 (45.85)
34	1.600 (40.64)	1.920 (48.77)	2.005 (50.93)
40	1.900 (48.26)	2.220 (56.39)	2.305 (58.55)
44	2.100 (53.34)	2.420 (61.47)	2.505 (63.63)
50	2.400 (60.96)	2.720 (69.09)	2.805 (71.25)
60	2.900 (73.66)	3.220 (81.79)	3.305 (83.95)
64	3.100 (78.74)	3.420 (86.87)	3.505 (89.03)

PC Board Layout



9017931 0000181 438