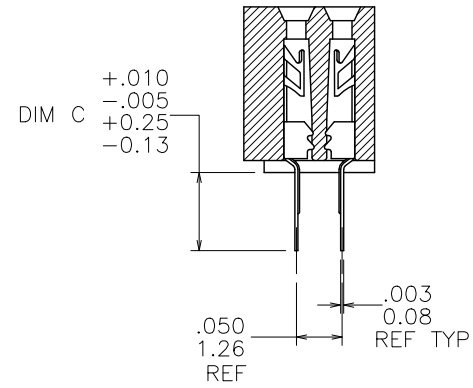
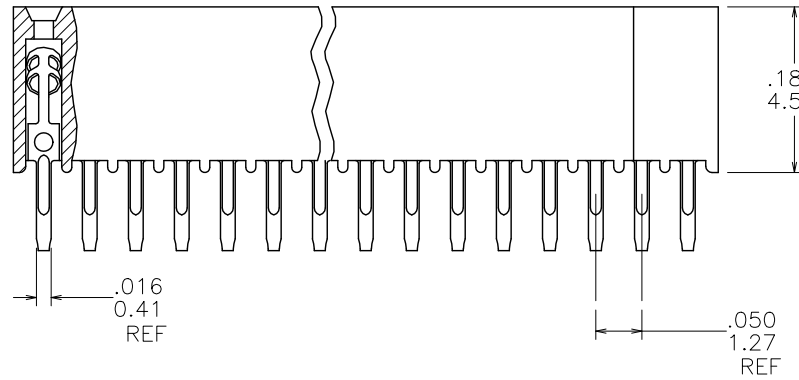
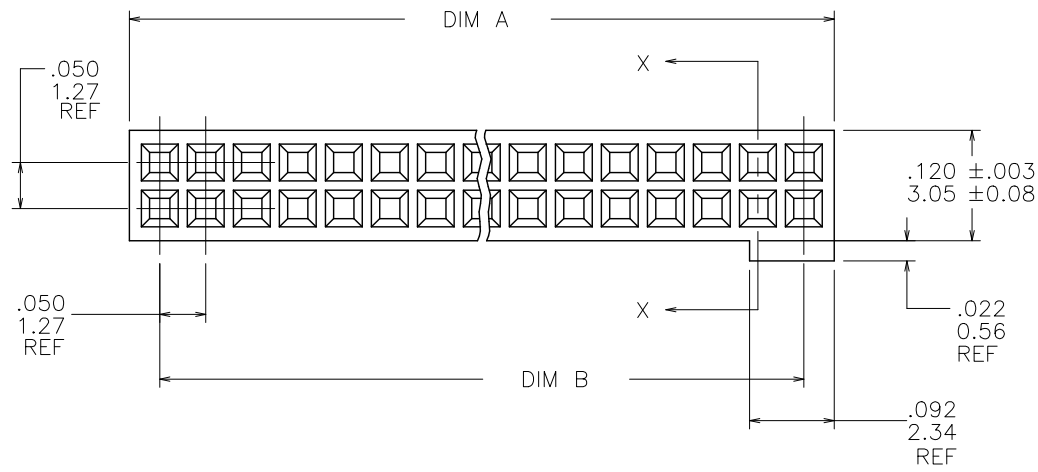


PRODUCT NUMBER
SEE TABLE



SECTION X-X

mat'l. code				surface		tolerance		projection		product family	
-				ISO 1302 ✓		ISO 406 ISO 1101				RIB CAGE	
ltr	ecn no	dr	date	tolerances unless otherwise specified						title	
K	v92870	EPK	9/03/99	angles	linear	xx ±.01/.3		INCH/MM		.050/1.27cc VERT. CARD CONN.	
L	v10994	DLW	3/09/01	σ±2'		xxx ±.005/.13		scale 5:1		THRU MT. W/POL. FEATURES	
M	v11674	CRG	6/22/01			xxxx ±.0020/.050				dwg no	
N	M05-0123	ERE	6/07/05	dr	J. MUSTARD	3/25/91				sheet 1 of 2 size	
P	M06-0284	AEA	7/27/06	engr	M. HAHN	3/25/91				87012 A3	
R	N10-0174	YO	6/17/10	chr	C. GINGRICH	3/25/91				type Product Customer Drawing	
S	ELX-N-010265	YO	2/13/12	appd	M. HAHN	3/25/91					
sheet	revision	S	S								
index	sheet	1	2								

PRODUCT NUMBER NOTE 6	SIZE	DIM A	DIM B	DIM C
87012-435	2 X 35	1.766/44.86	1.700/43.18	.115/2.92
-445	2 X 45	2.266/57.56	2.200/55.88	.115/2.92
-535	2 X 35	1.766/44.86	1.700/43.18	.100/2.54
-605	2 X 5	.266/6.76	.200/5.08	.085/2.16
-610	2 X 10	.516/13.11	.450/11.43	
-615	2 X 15	.766/19.46	.700/17.78	
-620	2 X 20	1.016/25.81	.950/24.13	
-625	2 X 25	1.266/32.16	1.200/30.48	
-630	2 X 30	1.516/38.51	1.450/36.83	
-635	2 X 35	1.766/44.86	1.700/43.18	
-640	2 X 40	2.016/51.21	1.950/49.53	
-645	2 X 45	2.266/57.56	2.200/55.88	
87012-650	2 X 50	2.516/63.91	2.450/62.23	.085/2.16

NOTE 5
NOTE 5

NOTES :

- HOUSING MATERIAL :
GLASS FILLED THERMOPLASTIC FLAME RETARDANT
PER UL 94V-0
COLOR : NATURAL
- TERMINAL MATERIAL : BeCu
- TERMINAL PLATING :
30u"/0.76um MIN HARD Au OR GXT OVER Ni ON CONTACT ZONES.
100u"/2.54um MIN TIN OVER 50u"/1.27um Ni. IN SOLDERING ZONES.
ZONES. OTHERWISE GOLD FLASH OR UNPLAT
- APPLICATION INFORMATION :
 - RECOMMENDED PCB LAYOUT PATTERN IS SHOWN IN FIGURE A.
 - MATING PINS TO BE .0176/0.447 TO .0181/0.459 DIA.
 - MATING PIN TIPS TO BE IN TRUE POSITION TO MATING GRID WITHIN .006/0.15 DIA.
 - SUGGESTED MATING PIN LENGTH .130/3.30 ±.010/0.25.
- DIM C TOLERANCE IS +.010/0.25 -.008/0.20.
- ADD "LF" SUFFIX AT THE END OF PART NUMBER FOR LEAD FREE OPTION.
- IF P/N IS LF THE PRODUCT MEETS EUROPEAN UNION DIRECTIVES AND OTHER COUNTRY REGULATION AS DESCRIBED IN GS-22-008.
- THE HOUSING WILL WITHSTAND EXPOSURE TO 260° PEAK TEMPERATURE FOR 15 SECONDS IN A WAVE SOLDER APPLICATION WITH A 1.5mm MINIMUM THICK CIRCUIT BOARD. SEE APPLICATION NOTES/PROCEDURES IF THEY ARE AVAILABLE.
- PRODUCT SPEC PER BUS-12-087.

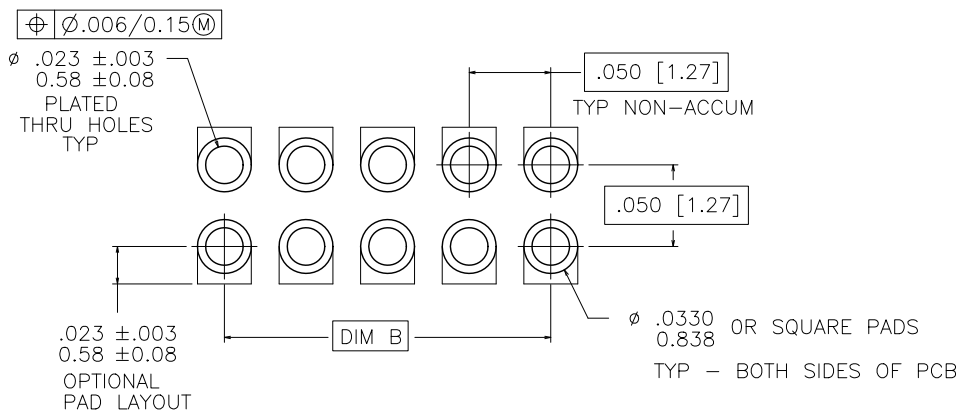


FIGURE A
RECOMMENDED
P.C.B. LAYOUT

mat'l. code		surface		tolerance		projection		product family	
-		ISO 1302 ✓		ISO 406 ISO 1101				RIB CAGE	
ltr	ecn	no	dr	date		tolerances unless otherwise specified		title	
S						angles linear xx ±.01/.3 xxx ±.005/.13 σ±2' xxx ±.0020/.050		INCH/MM 050/1.27cc VERT. CARD CONN. THRU MT. W/POL. FEATURES	
dr J. MUSTARD 3/25/91						scale 10:1		dwg no sheet 2 of 2 size	
enr M. HAHN 3/25/91								87012 A3	
chr C. GINGRICH 3/25/91								type Product Customer Drawing	
appd M. HAHN 3/25/91									
sheet index	revision sheet								