

Breakaway Headers—Unshrouded Single Row, .100 [2.54] Centerlines (Continued)

**.0252 [0.642]
Right-Angle Post**

Material:

Housing—Black thermoplastic, flame retardant

Posts—Copper alloy

Related Product Data:

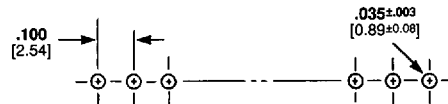
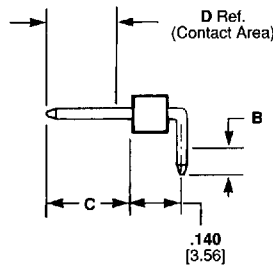
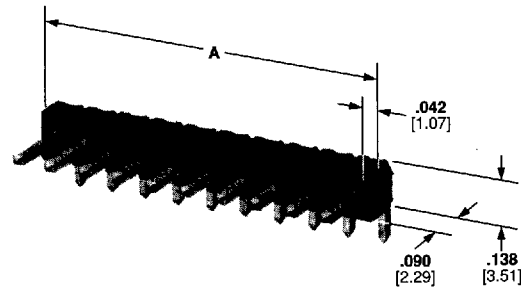
Mateable Connectors—
pages 34 & 35

Plating Specifications:

Duplex C— $.000030$ [0.00076] gold on contact area, $.000100$ -. 000200 [0.00254-0.00508] tin-lead on solder area, with entire post underplated $.000050$ [0.00127] nickel

Duplex D— $.000015$ [0.00038] gold on contact area, $.000100$ -. 000200 [0.00254-0.00508] tin-lead on solder area, with entire post underplated $.000050$ [0.00127] nickel

Tin-Lead/Nickel—
 $.000100$ -. 000200 [0.00254-0.00508] tin-lead over $.000050$ [0.00127] nickel on entire post



Recommended Pc Board Hole Layout

* $\pm .003$ [± 0.08] tolerances not to accumulate within one connector pattern.

Breakaway Headers, Unshrouded, Single Row, Right-Angle
.100 [2.54] Centerline Products

Breakaway Headers—Unshrouded Single Row, .100 [2.54] Centerlines (Continued)

.0252 [0.642] Right-Angle Post (Continued)

No. of Pos.	A Dim.	Packaging Quantity	B = .090 [2.29] C = .230 [5.84] D = .185 [4.70]		B = .120 [3.05] C = .230 [5.84] D = .185 [4.70]			B = .110 [2.79] C = .318 [8.08] D = .200 [5.08]		
			Post Plating		Post Plating			Post Plating		
			Duplex C	Tin-Lead/Nickel	Duplex C	Duplex D	Tin-Lead/Nickel	Duplex C	Duplex D	Tin-Lead/Nickel
1	.084 2.13	250	103765-1	103759-1	103148-1	103325-1	103329-1	102978-1	102974-1	103323-1
2	.184 4.67	250	103765-2	103759-2	103148-2	103325-2	103329-2	102978-2	102974-2	103323-2
3	.284 7.21	250	103765-3	103759-3	103148-3	103325-3	103329-3	102978-3	102974-3	103323-3
4	.384 9.75	250	103765-4	103759-4	103148-4	103325-4	103329-4	102978-4	102974-4	103323-4
5	.484 12.29	250	103765-5	103759-5	103148-5	103325-5	103329-5	102978-5	102974-5	103323-5
6	.584 14.83	250	103765-6	103759-6	103148-6	103325-6	103329-6	102978-6	102974-6	103323-6
7	.684 17.37	250	103765-7	103759-7	103148-7	103325-7	103329-7	102978-7	102974-7	103323-7
8	.784 19.91	250	103765-8	103759-8	103148-8	103325-8	103329-8	102978-8	102974-8	103323-8
9	.884 22.45	250	103765-9	103759-9	103148-9	103325-9	103329-9	102978-9	102974-9	103323-9
10	.984 24.99	250	1-103765-0	1-103759-0	1-103148-0	1-103325-0	1-103329-0	1-102978-0	1-102974-0	1-103323-0
11	1.084 27.53	100	1-103765-1	1-103759-1	1-103148-1	1-103325-1	1-103329-1	1-102978-1	1-102974-1	1-103323-1
12	1.184 30.07	100	1-103765-2	1-103759-2	1-103148-2	1-103325-2	1-103329-2	1-102978-2	1-102974-2	1-103323-2
13	1.284 32.61	100	1-103765-3	1-103759-3	1-103148-3	1-103325-3	1-103329-3	1-102978-3	1-102974-3	1-103323-3
14	1.384 35.15	100	1-103765-4	1-103759-4	1-103148-4	1-103325-4	1-103329-4	1-102978-4	1-102974-4	1-103323-4
15	1.484 37.69	100	1-103765-5	1-103759-5	1-103148-5	1-103325-5	1-103329-5	1-102978-5	1-102974-5	1-103323-5
16	1.584 40.23	100	—	—	1-103148-6	1-103325-6	1-103329-6	1-102978-6	1-102974-6	1-103323-6
17	1.684 42.77	100	—	—	1-103148-7	1-103325-7	1-103329-7	1-102978-7	1-102974-7	1-103323-7
18	1.784 45.31	100	—	—	1-103148-8	1-103325-8	1-103329-8	1-102978-8	1-102974-8	1-103323-8
19	1.884 47.85	100	—	—	1-103148-9	1-103325-9	1-103329-9	1-102978-9	1-102974-9	1-103323-9
20	1.984 50.39	100	2-103765-0	2-103759-0	2-103148-0	2-103325-0	2-103329-0	2-102978-0	2-102974-0	2-103323-0
21	2.084 52.93	100	—	—	2-103148-1	2-103325-1	2-103329-1	2-102978-1	2-102974-1	2-103323-1
22	2.184 55.47	100	—	—	2-103148-2	2-103325-2	2-103329-2	2-102978-2	2-102974-2	2-103323-2
23	2.284 58.01	100	—	—	2-103148-3	2-103325-3	2-103329-3	2-102978-3	2-102974-3	2-103323-3
24	2.384 60.55	100	—	—	2-103148-4	2-103325-4	2-103329-4	2-102978-4	2-102974-4	2-103323-4
25	2.484 63.09	100	2-103765-5	2-103759-5	2-103148-5	2-103325-5	2-103329-5	2-102978-5	2-102974-5	2-103323-5
26	2.584 65.63	100	—	—	2-103148-6	2-103325-6	2-103329-6	2-102978-6	2-102974-6	2-103323-6
27	2.684 68.17	100	—	—	2-103148-7	2-103325-7	2-103329-7	2-102978-7	2-102974-7	2-103323-7
28	2.784 70.71	100	—	—	2-103148-8	2-103325-8	2-103329-8	2-102978-8	2-102974-8	2-103323-8
29	2.884 73.27	100	—	—	2-103148-9	2-103325-9	2-103329-9	2-102978-9	2-102974-9	2-103323-9
30	2.984 75.79	100	3-103765-0	3-103759-0	3-103148-0	3-103325-0	3-103329-0	3-102978-0	3-102974-0	3-103323-0
31	3.084 78.33	100	—	—	3-103148-1	3-103325-1	3-103329-1	3-102978-1	3-102974-1	3-103323-1
32	3.184 80.87	100	—	—	3-103148-2	3-103325-2	3-103329-2	3-102978-2	3-102974-2	3-103323-2
33	3.284 83.41	100	—	—	3-103148-3	3-103325-3	3-103329-3	3-102978-3	3-102974-3	3-103323-3
34	3.384 85.95	100	—	—	3-103148-4	3-103325-4	3-103329-4	3-102978-4	3-102974-4	3-103323-4
35	3.484 88.49	100	3-103765-5	3-103759-5	3-103148-5	3-103325-5	3-103329-5	3-102978-5	3-102974-5	3-103323-5
36	3.584 91.03	100	—	—	3-103148-6	3-103325-6	3-103329-6	3-102978-6	3-102974-6	3-103323-6
37	3.684 93.57	100	—	—	3-103148-7	3-103325-7	3-103329-7	3-102978-7	3-102974-7	3-103323-7
38	3.784 96.11	100	—	—	3-103148-8	3-103325-8	3-103329-8	3-102978-8	3-102974-8	3-103323-8
39	3.884 98.65	100	—	—	3-103148-9	3-103325-9	3-103329-9	3-102978-9	3-102974-9	3-103323-9
40	3.984 101.19	100	4-103765-0	4-103759-0	4-103148-0	4-103325-0	4-103329-0	4-102978-0	4-102974-0	4-103323-0

Notes: 1. Headers may be broken to desired number of positions using Hand Tool No. 91406-1.
2. Other post lengths are available, consult AMP Incorporated.



Hand Tool No. 91406-1

.100 [2.54] Centerline Products
Breakaway Headers, Unshrouded, Single Row, Right-Angle

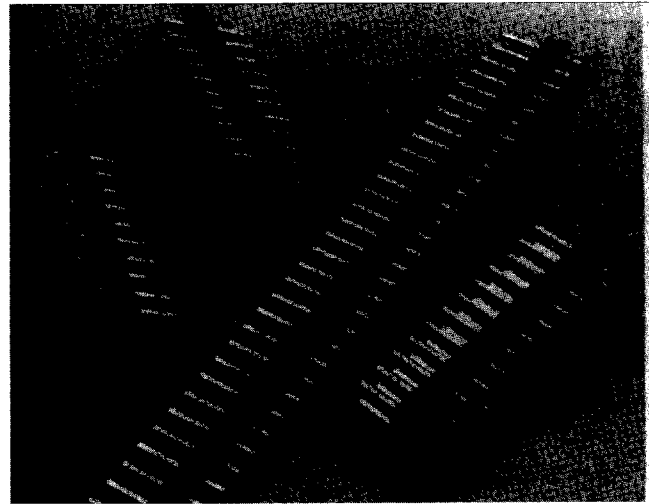
Breakaway, Retention and Standard Headers—Unshrouded

Product Facts

- Design and inventory versatility—headers can be broken into any size needed
- Variety of popular sizes available
- Substantial time/labor savings—install all posts at one time
- Vertical and right-angle versions available in single- and double-row configurations
- Copper alloy, posts
- Choice of gold duplex or tin-lead plated posts
- Post lengths include .230 [5.84] and .318 [8.08] for connector mating
- Can be select loaded, consult AMP Incorporated

- Board retention feature available
- Flame retardant, black thermoplastic housings; 94V-0 rated
- Recognized under the Component Program of Underwriters Laboratories Inc., File No. E28476 
- Certified by Canadian Standards Association, File No. LR 16455 

Breakaway and Retention Headers—Unshrouded

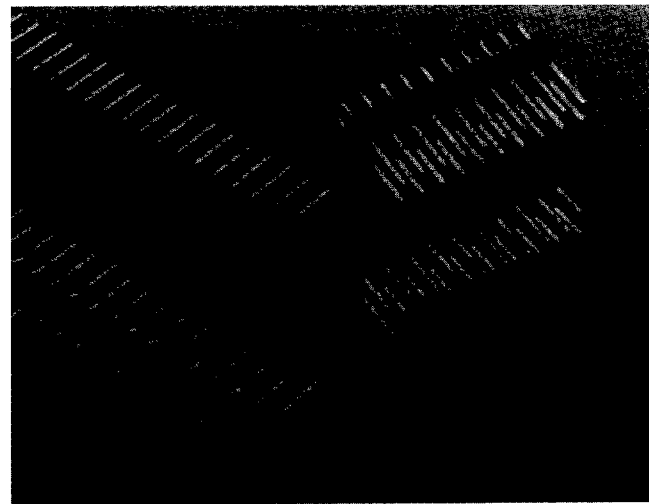


Product Facts

- Variety of popular sizes available
- Substantial time/labor savings—install all posts at one time
- Vertical and right-angle versions available in single- and double-row configurations
- Triple-row version available in vertical configurations
- Copper alloy, drawn wire posts
- Choice of select gold or tin-lead plated posts
- Post length is .318 [8.08] for connector mating

- Flame retardant, black thermoplastic housings; 94V-0 rated
- Recognized under the Component Program of Underwriters Laboratories Inc., File No. E28476 
- Certified by Canadian Standards Association, File No. LR 7189 

Standard Headers—Unshrouded



Performance Characteristics:

Electrical

Insulation Resistance—5,000 megohms minimum initial

Dielectric Withstanding Voltage—750 RMS at sea level

Environmental

Operating Temperature—-65° C to +105° C (black thermoplastic housings)