

## LOW PROFILE HEADERS STRAIGHT PINS WITH RETAINER/EJECTOR LATCHES

.100" x .100" CENTERS



LR92984 E60980

### PHYSICAL PROPERTIES

INSULATION MATERIAL: Glass filled thermoplastic rated UL 94V-0

COLOR: Blue

CONTACT MATERIAL: Phosphor bronze with 30µ inches min. gold over 50µ inches min. nickel in contact zone; tin/lead over nickel in termination area.

### ELECTRICAL PROPERTIES

CURRENT RATING: 1 Amp

INSULATION RESISTANCE: >1 x 10<sup>9</sup> Ohms @ 500 VDC

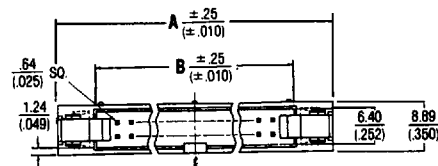
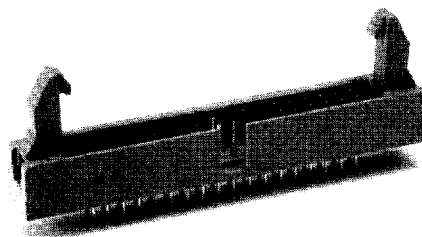
DIELECTRIC STRENGTH: >1000 VRMS @ sea level

### ENVIRONMENTAL PROPERTIES

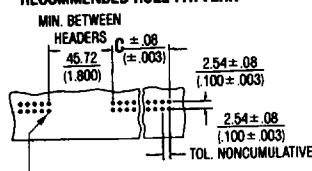
TEMPERATURE RATING: -55°C TO 125°C

### MATING CONNECTORS

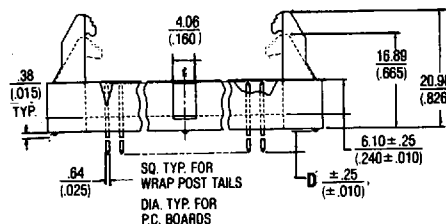
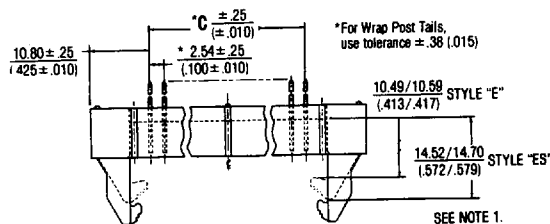
FEMALE SOCKETS: See pages 8-10



### RECOMMENDED HOLE PATTERN



HOLE DIA. ±.08 (±.003) AFTER PLATING	TYPE OF CONTACT
.89 (.035)	PCB Solder Tails
1.14 (.045)	Wrap Post Tails



### Ordering Information

CATALOG NUMBERS			NO. OF POS.	DIMENSIONS IN MM (INCHES)		
2.59 (.102) FOR 1.57 (.062) P.C. BOARDS	4.19 (.165) FOR 3.18 (.125) P.C. BOARDS	15.49 (.610) WRAP POST TAILS		A	B	C
609-0827XX	609-0837XX	609-0857XX	8	29.21 (1.150)	15.24 (.600)	7.26 (.300)
609-1027XX	609-1037XX	609-1057XX	10	31.75 (1.250)	17.78 (.700)	10.16 (.400)
609-1227XX	609-1237XX	609-1257XX	12	34.29 (1.350)	20.32 (.800)	17.70 (.500)
609-1427XX	609-1437XX	609-1457XX	14	36.83 (1.450)	22.86 (.900)	15.24 (.600)
609-1627XX	609-1637XX	609-1657XX	16	39.37 (1.550)	25.40 (1.000)	17.78 (.700)
609-2027XX	609-2037XX	609-2057XX	20	44.45 (1.750)	30.48 (1.200)	22.86 (.900)
609-2427XX	609-2437XX	609-2457XX	24	49.53 (1.950)	35.55 (1.400)	27.94 (1.100)
609-2627XX	609-2637XX	609-2657XX	26	52.07 (2.050)	38.10 (1.500)	30.48 (1.200)
609-3027XX	609-3037XX	609-3057XX	30	57.15 (2.250)	43.18 (1.700)	35.56 (1.400)
609-3427XX	609-3437XX	609-3457XX	34	62.23 (2.450)	48.26 (1.900)	40.64 (1.600)
609-3627XX	609-3637XX	609-3657XX	36	64.77 (2.550)	50.80 (2.000)	43.18 (1.700)
609-4027XX	609-4037XX	609-4057XX	40	69.85 (2.750)	55.88 (2.200)	48.26 (1.900)
609-4427XX	609-4437XX	609-4457XX	44	74.93 (2.950)	60.96 (2.400)	53.34 (2.100)
609-5027XX	609-5037XX	609-5057XX	50	82.55 (3.250)	68.58 (2.700)	60.96 (2.400)
609-5627XX	609-5637XX	609-5657XX	56	90.17 (3.550)	76.20 (3.000)	68.58 (2.700)
609-6027XX	609-6037XX	609-6057XX	60	95.25 (3.750)	81.28 (3.200)	73.66 (2.900)
609-6427XX	609-6437XX	609-6457XX	64	100.33 (3.950)	86.36 (3.400)	78.74 (3.100)

1. For long ejectors, add suffix ES (-XXXES). For short ejectors, add suffix E (-XXXE)

2. Add "R" to part number for PCB retention feature.