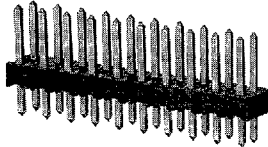


Surface Mount Compatible, High Temperature Headers — Unshrouded (AMPMODU) (Continued)

Double-Row .100 x .100 [2.54 x 2.54] Centers with Special Stand-offs

.025 [0.64] Square
 Straight Post



Material and Finish

Housing — Black thermoplastic, 94V-0 rated, high temperature compatible

Posts — Phosphor bronze, plated as follows:

Plating A — Duplex plated .000030 [0.00076] gold on contact area, .000100-.000200 [0.00254-0.00508] tin-lead on solder tail, with entire post underplated .000050 [0.00127] nickel

Plating B — Duplex plated .000015 [0.00038] gold on contact area, .000100-.000200 [0.00254-0.00508] tin-lead on solder tail, with entire post underplated .000050 [0.00127] nickel

Plating C — .000100-.000200 [0.00254-0.00508] tin-lead over .000050 [0.00127] nickel

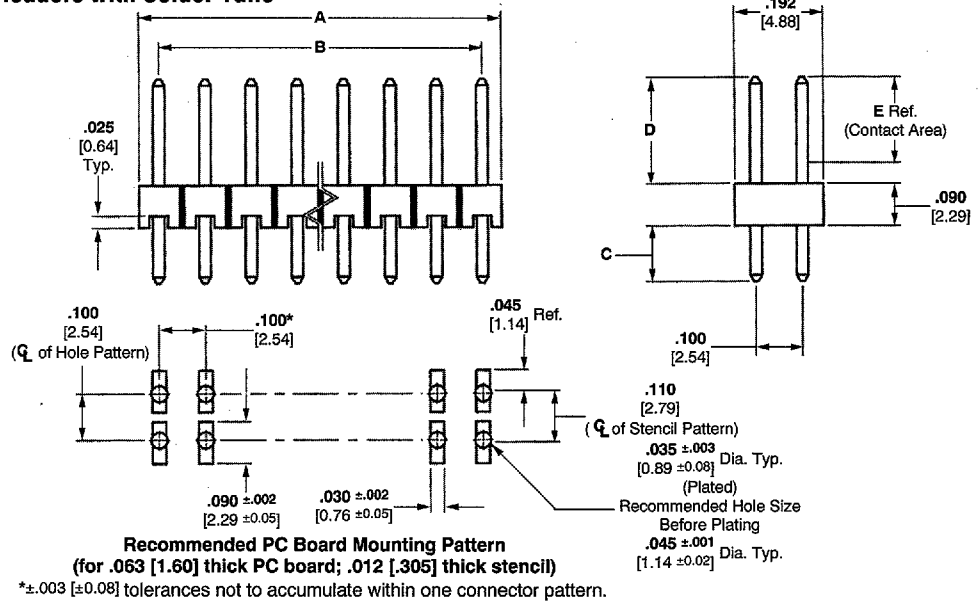
Performance Characteristics Page 221

Related Product Data

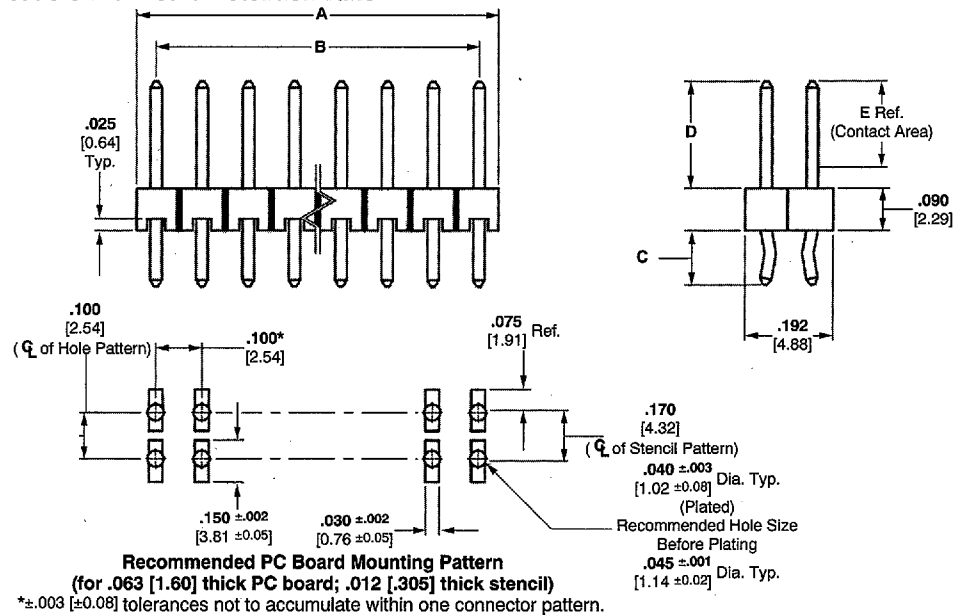
Mateable Connectors —
 Catalog 65816

Packaging — Bag

Headers with Solder Tails



Headers with Board Retention Tails



Header Style	No. of Pos.	Dimensions		Post Plating/Part Nos.			Post Plating/Part Nos.			Post Plating/Part Nos.		
		A	B	C = .090 [2.29] D = .230 [5.84] E = .185 [4.70]			C = .120 [3.05] D = .230 [5.84] E = .185 [4.70]			C = .125 [3.18] D = .318 [8.08] E = .200 [5.08]		
				Plating A	Plating C	Plating A	Plating B	Plating C	Plating A	Plating B	Plating C	
With Solder Tails (See Notes 1 and 2.)	2	.084 2.13	—	146261-1	146258-1	146257-1	146256-1	146254-1	146253-1	146252-1	146250-1	
	80	3.984 101.19	3.900 99.06	4-146261-0	4-146258-0	4-146257-0	4-146256-0	4-146254-0	4-146253-0	4-146252-0	4-146250-0	
With Board Retention Tails (See Note 2.)	2	.084 2.13	—	146273-1	146270-1	146269-1	146268-1	146266-1	146265-1	146264-1	146262-1	
	80	3.984 101.19	3.900 99.06	4-146273-0	4-146270-0	4-146269-0	4-146268-0	4-146266-0	4-146265-0	4-146264-0	4-146262-0	

Notes: 1. Headers without retention tails may be broken to the desired number of positions using **Hand Tool 91406-1**.
 2. Headers are also available in sizes 4 thru 78 positions. When ordering, add the prefix and/or suffix (dash) numbers to the base part number that corresponds with the number of positions per row. For example, the complete part number for a 16-position header with solder tails (C dimension .090 [2.29], post plating A) would be 146261-8. The complete part number for a 40-position header with board retention tails (C dimension .120 [3.05], post plating B) would be 2-146268-0. This part numbering system applies only to this page.

