

2-292207-6 ✓ ACTIVE

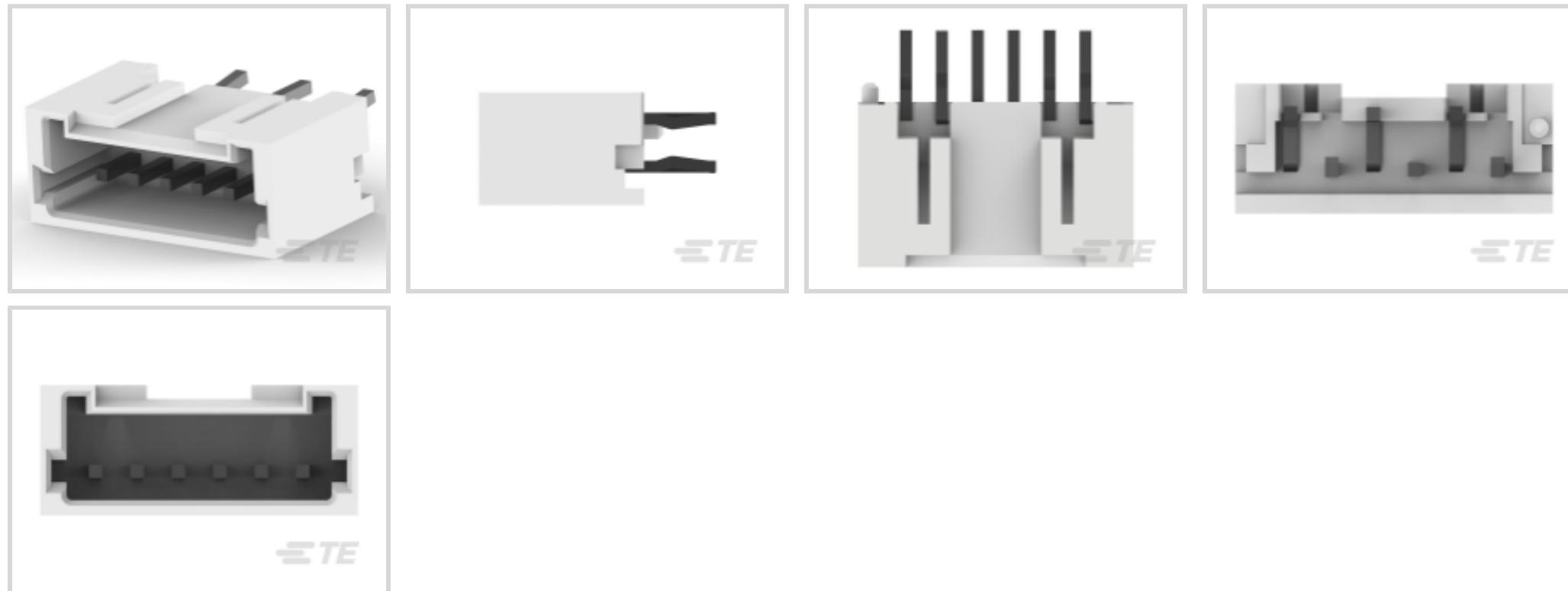
TE Internal #: 2-292207-6

PCB Mount Header, Vertical, Wire-to-Board, 6 Position, 1.5 mm [.059 in] Centerline, Fully Shrouded, Tin, Through Hole - Solder, Signal, Black

[View on TE.com >](#)



Connectors > PCB Connectors > PCB Headers & Receptacles



Connector System: **Wire-to-Board**

Number of Positions: **6**

Number of Rows: **1**

Centerline (Pitch): **1.5 mm [.059 in]**

PCB Mount Orientation: **Vertical**

## Features

### Product Type Features

Connector System	Wire-to-Board
Header Type	Fully Shrouded
Connector & Contact Terminates To	Printed Circuit Board
PCB Connector Assembly Type	PCB Mount Header

### Configuration Features

Number of Positions	6
Number of Rows	1
PCB Mount Orientation	Vertical

### Electrical Characteristics

Operating Voltage	50 VAC
-------------------	--------

### Body Features

Primary Product Color	Black
-----------------------	-------

### Contact Features

Mating Square Post Dimension	.5 mm[.02 in]
------------------------------	---------------

39.37  $\mu$ m

Contact Mating Area Plating Material

Tin

Contact Type

Pin

Contact Current Rating (Max)

2 A

### Termination Features

Square Termination Post &amp; Tail Dimension

.5 mm[.02 in]

Termination Method to Printed Circuit Board

Through Hole - Solder

### Mechanical Attachment

Mating Alignment Type

Polarization

Mating Retention

With

Connector Mounting Type

Board Mount

Mating Alignment

With

PCB Mount Alignment

With

PCB Mount Retention

With

### Housing Features

Housing Material

Nylon(G.F)

Centerline (Pitch)

1.5 mm[.059 in]

### Dimensions

Connector Length

11.5 mm

Connector Height

8.4 mm[.33 in]

Connector Width

4.7 mm[.185 in]

### Usage Conditions

Operating Temperature Range

-30 – 105 °C[-22 – 221 °F]

### Operation/Application

Circuit Application

Signal

### Industry Standards

UL Flammability Rating

UL 94V-0

### Packaging Features

Packaging Type

Box, Tray

### Product Compliance

For compliance documentation, visit the product page on [TE.com](https://www.te.com)>



EU RoHS Directive 2011/65/EU	Compliant
EU ELV Directive 2000/53/EC	Compliant
China RoHS 2 Directive MIIT Order No 32, 2016	No Restricted Materials Above Threshold
EU REACH Regulation (EC) No. 1907/2006	Current ECHA Candidate List: JUNE 2023 (235) Candidate List Declared Against: JUNE 2023 (235) Does not contain REACH SVHC
Halogen Content	Not Low Halogen - contains Br or Cl > 900 ppm.
Solder Process Capability	Wave solder capable to 265°C

Product Compliance Disclaimer

This information is provided based on reasonable inquiry of our suppliers and represents our current actual knowledge based on the information they provided. This information is subject to change. The part numbers that TE has identified as EU RoHS compliant have a maximum concentration of 0.1% by weight in homogenous materials for lead, hexavalent chromium, mercury, PBB, PBDE, DBP, BBP, DEHP, DIBP, and 0.01% for cadmium, or qualify for an exemption to these limits as defined in the Annexes of Directive 2011/65/EU (RoHS2). Finished electrical and electronic equipment products will be CE marked as required by Directive 2011/65/EU. Components may not be CE marked. Additionally, the part numbers that TE has identified as EU ELV compliant have a maximum concentration of 0.1% by weight in homogenous materials for lead, hexavalent chromium, and mercury, and 0.01% for cadmium, or qualify for an exemption to these limits as defined in the Annexes of Directive 2000/53/EC (ELV). Regarding the REACH Regulation, the information TE provides on SVHC in articles for this part number is based on the latest European Chemicals Agency (ECHA) 'Guidance on requirements for substances in articles' posted at this URL: <https://echa.europa.eu/guidance-documents/guidance-on-reach>

### Compatible Parts

TE Part # 353908-6  
CT REC HSG 6P CRIMP TYPE WHITE

TE Part # CAT-AM7053-C7671  
Mini Common Termination Contacts

TE Part # 2-353293-6  
1.5MM CT MT REC ASS'Y 6P BLACK

TE Part # 2829114-2  
600MM WIRE HARNESS, 6 POS CONN, 24AWG

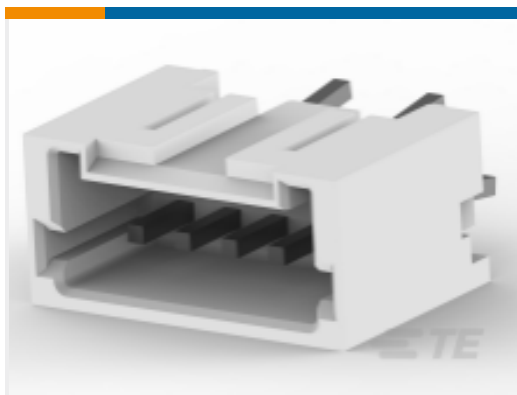
### Customers Also Bought

TE Part #3-292207-5  
MINI CT SGL DIP V 15P BLACK

TE Part #3-292207-1  
MINI CT SGL DIP V 11P BLACK

TE Part #1-292207-0  
MINI CT SGL DIP V 10P NAT

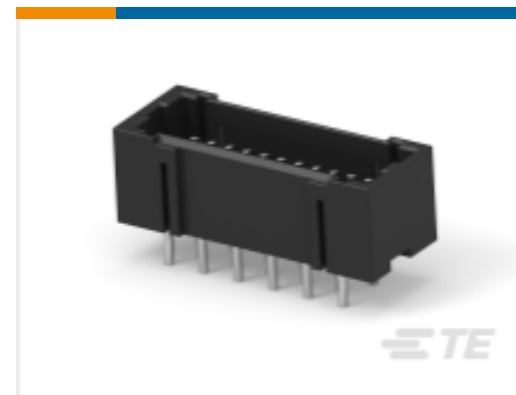
TE Part #2-292207-4  
MINI CT SGL DIP V 4P BLACK



TE Part #2-292207-5  
MINI CT SGL DIP V 5P BLACK



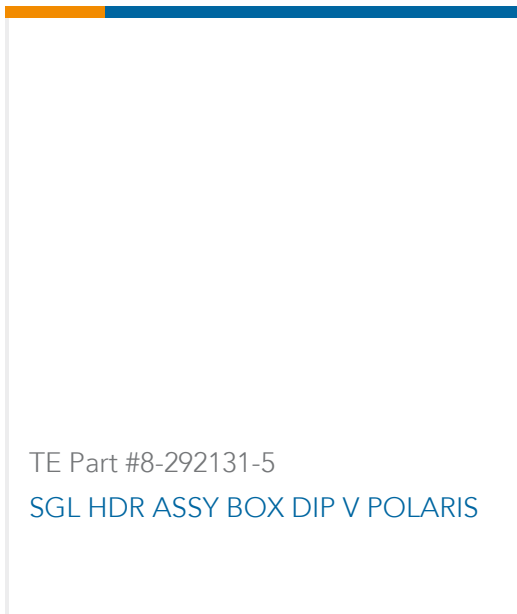
TE Part #2-292207-3  
MINI CT SGL DIP V 3P BLACK



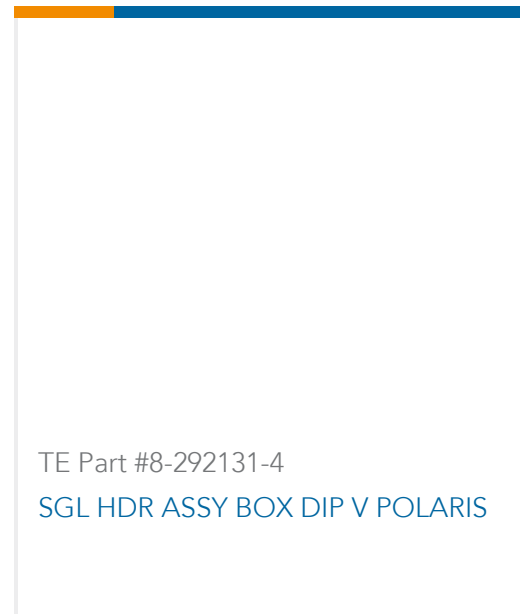
TE Part #4-292208-2  
MINI CT D/R DIP V 22P BLACK



TE Part #2-292207-7  
MINI CT SGL DIP V 7P BLACK



TE Part #8-292131-5  
SGL HDR ASSY BOX DIP V POLARIS



TE Part #8-292131-4  
SGL HDR ASSY BOX DIP V POLARIS

## Documents

### Product Drawings

#### MINI CT SGL DIP V 6P BLACK

English

### CAD Files

#### 3D PDF

3D

#### Customer View Model

[ENG\\_CVM\\_CVM\\_2-292207-6\\_G.2d\\_dxf.zip](#)

English

#### Customer View Model

[ENG\\_CVM\\_CVM\\_2-292207-6\\_G.3d\\_igs.zip](#)

English

#### Customer View Model

[ENG\\_CVM\\_CVM\\_2-292207-6\\_G.3d\\_stp.zip](#)

English

By downloading the CAD file I accept and agree to the [Terms and Conditions](#) of use.

### Product Specifications

#### Application Specification

English

### Product Environmental Compliance

#### MD\_2-292207-6\_0810201838\_dmtec

English

#### MD\_2-292207-6\_0810201838\_dmtec

English



## Agency Approvals

UL

English