

M SERIES 3 WALL RIGHT ANGLE SHROUDED HEADER

Features

.028 [0.71] round solder tail with selective gold plating
Conforms to MIL-C-83503/20B

Specifications Environmental

Temperature Range: -55°C to +120°C

Mechanical

Insulator Material: Glass filled polyester, gray, UL94V-0

Contact Material: Phosphor Bronze

Contact Plating: Standard

Contact Area: 30µ IN gold
Tail Area: 150µ IN tin/lead

Optional

Contact Area: 15µ IN gold
Tail Area: 150µ IN tin/lead

Electrical

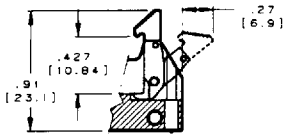
Current Rating: 1 AMP

Dielectric Withstanding Voltage: 500 Vrms

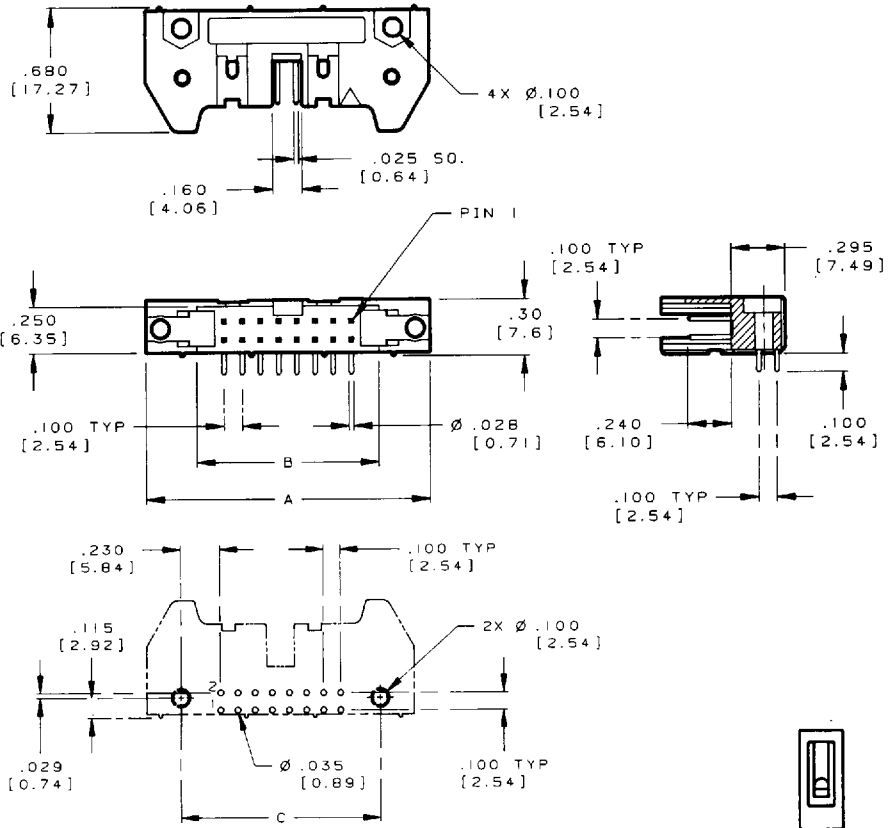
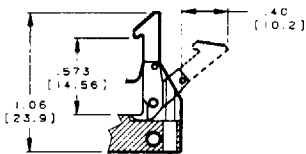
Insulation Resistance: > 1000 Megohms

Mating CA Product: IDS2, FID and IDS

Short Latch Ejector
for use with IDS2 and FID without strain relief



Long Latch Ejector
for use with IDS2, FID and IDS with strain relief



P.C.B. HOLE PATTERN (COMPONENT SIDE)

POLARIZING KEY CA-HK

No. of Positions	Dimensions			Plating	Part Numbers		
	A	B	C		no latch	short latch	long latch
* 10	1.26 [32.0]	.700 [17.78]	1.100 [27.94]	30µ IN sel gold	CA-10H3RM-1F	CA-10H3RM-1F-S	CA-10H3RM-1F-SR
				15µ IN sel gold	CA-10H3RM-1C	CA-10H3RM-1C-S	CA-10H3RM-1C-SR
10	1.26 [32.0]	.700 [17.78]	1.100 [27.94]	30µ IN sel gold	CA-10H3RM-1F-SPT	CA-10H3RM-1F-SPT-S	CA-10H3RM-1F-SPT-SR
				15µ IN sel gold	CA-10H3RM-1C-SPT	CA-10H3RM-1C-SPT-S	CA-10H3RM-1C-SPT-SR
14	1.46 [37.1]	.900 [22.86]	1.300 [33.02]	30µ IN sel gold	CA-14H3RM-1F	CA-14H3RM-1F-S	CA-14H3RM-1F-SR
				15µ IN sel gold	CA-14H3RM-1C	CA-14H3RM-1C-S	CA-14H3RM-1C-SR
16	1.56 [39.6]	1.000 [25.40]	1.400 [35.56]	30µ IN sel gold	CA-16H3RM-1F	CA-16H3RM-1F-S	CA-16H3RM-1F-SR
				15µ IN sel gold	CA-16H3RM-1C	CA-16H3RM-1C-S	CA-16H3RM-1C-SR
20	1.76 [44.7]	1.200 [30.48]	1.600 [40.64]	30µ IN sel gold	CA-20H3RM-1F	CA-20H3RM-1F-S	CA-20H3RM-1F-SR
				15µ IN sel gold	CA-20H3RM-1C	CA-20H3RM-1C-S	CA-20H3RM-1C-SR
26	2.06 [52.3]	1.500 [38.10]	1.900 [48.26]	30µ IN sel gold	CA-26H3RM-1F	CA-26H3RM-1F-S	CA-26H3RM-1F-SR
				15µ IN sel gold	CA-26H3RM-1C	CA-26H3RM-1C-S	CA-26H3RM-1C-SR
34	2.46 [62.5]	1.900 [48.26]	2.300 [58.42]	30µ IN sel gold	CA-34H3RM-1F	CA-34H3RM-1F-S	CA-34H3RM-1F-SR
				15µ IN sel gold	CA-34H3RM-1C	CA-34H3RM-1C-S	CA-34H3RM-1C-SR
40	2.76 [70.1]	2.200 [55.88]	2.600 [66.04]	30µ IN sel gold	CA-40H3RM-1F	CA-40H3RM-1F-S	CA-40H3RM-1F-SR
				15µ IN sel gold	CA-40H3RM-1C	CA-40H3RM-1C-S	CA-40H3RM-1C-SR
50	3.26 [82.8]	2.700 [68.58]	3.100 [78.74]	30µ IN sel gold	CA-50H3RM-1F	CA-50H3RM-1F-S	CA-50H3RM-1F-SR
				15µ IN sel gold	CA-50H3RM-1C	CA-50H3RM-1C-S	CA-50H3RM-1C-SR
60	3.76 [95.5]	3.200 [81.28]	3.600 [91.44]	30µ IN sel gold	CA-60H3RM-1F	CA-60H3RM-1F-S	CA-60H3RM-1F-SR
				15µ IN sel gold	CA-60H3RM-1C	CA-60H3RM-1C-S	CA-60H3RM-1C-SR

* No Polarizing Slot



E9598 I



LR65050